



rijksuniversiteit
groningen



30-nov-22

| 1

Information session Psychology - Master Admission & Selection -

By

Lex Jurna

Study advisor of the psychology programme



Overall 11 master's programs

Eight English programs:

- Clinical Forensic Psychology and Victimology
- Theory and History of Psychology
- Talent Development and Creativity
- Clinical Neuropsychology
- Environmental Psychology
- Applied Cognitive neuroscience
- Applied Social Psychology
- Work, Organizational and Personnel Psychology



Three Dutch programs

- Klinische psychologie
- Ontwikkelingspsychologie
- Klinische neuropsychologie





Admission requirements

Differs per prior education

- › A bachelor's in psychology at the University of Groningen
- › A regular bachelor's in psychology at a Dutch university;
- › Another bachelor's than psychology at a Dutch university;
- › A bachelor's in psychology or bachelor's with a strong focus on psychology at a foreign academic university;
- › A bachelor of applied psychology at a Dutch HBO institution.

Visit our website and follow the steps:

- › <https://www.rug.nl/gmw/psychology/education/master/application-admission-and-selection/application-and-admission-per-prior-education>



Admission requirements

Consult our website:

<https://www.rug.nl/gmw/psychology/education/master/application-admission-and-selection/admission-requirements-overview-per-master-track>





✓ MSc Psychology: application, admission & selection

General information

Application and admission per prior education

General and track-specific criteria

Language requirements

Frequently Asked Questions

Contact

Admission requirements: overview per master track

Choose the track(s) you are interested in (max 4)

Good to know:

ACN, ASP, EP, TDC and WOP have same requirements

KP and CFP&V have the same requirements *

- ACN Applied Cognitive Neuroscience
- ASP Applied Social Psychology
- CFP&V Clinical Forensic Psychology & Victimology
- CN/KN Clinical Neuropsychology/Klinische Neuropsychologie
- EP Environmental Psychology
- KP Klinische Psychologie
- O Ontwikkelingspsychologie
- TDC Talent Development and Creativity
- THP Theory and History of Psychology
- WOP Work, Organizational and Personnel Psychology

Detailed descriptions of the entrance requirements: [general criteria and all track-specific criteria](#)



COURSES	CFP&V
Substantive psychology courses	
Total required ECs on substantive courses (i.e. courses dealing with psychological theories and application, not with skills, philosophy or history)	65 EC
Possible compensation of substantive psychology courses by non-psychology courses that are relevant for the track	NONE
Required ECs on <i>track specific</i> substantive courses (as part of the total of required substantive courses)	AT LEAST 20 EC ON CLIN.PSYCH
Skills courses and reflexive courses	
At least 5 EC on Practical skills on communication with and diagnosis of patients/clients	YES
At least 15 EC on Statistics, covering at least: >Basic descriptive, graphical and inferential statistical techniques >Simple and Multiple regression >ANOVA (One- and Two way designs) >Logistic regression >Repeated measures ANOVA >ANCOVA>>Moderator analysis (= regression analysis including interactions of quantitative predictors)	YES
At least 10 EC on Psychological Research Methodology: Theory and Practice. This should include theoretical concepts in research methodology and research ethics, as well as practical training in carrying out a full research project (i.e., deriving and formulating a research question, designing a study (which should be at least partially quantitative), collecting data, analyzing results, reporting the whole project).	YES, AND A BACHELOR THESIS OR COMPARABLE TREATISE OF AT LEAST 9 EC IS REQUIRED
At least 5 EC on Reliability and Validity of Psychological tests and Test Theory	YES
At least 5 EC on Theory/Philosophy of Science and/or History of Psychology	YES

* = Input is required

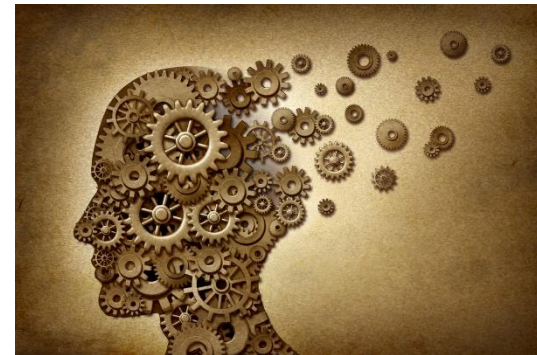


Bachelor's psychology from the University of Groningen or another Dutch university?

| 8

For some master's tracks your diploma satisfies all criteria
For some tracks there are more specific criteria:

- › Klinische psychologie
- › Clinical forensic psychology and victomology
- › Klinische neuropsychologie/ Clinical neuropsychology
- › Ontwikkelingspsychologie





Proof of language proficiency

- › For Dutch tracks being proficient *at native speaker level* is required
- › The English tracks require you to prove that your English skills are sufficient*

***This does not count for students that finished a VWO in the Netherlands and for students that are native English speakers**



Deadline 1st of March for start in September
Deadline 1st of October for start in February
(not all tracks start in February)

| 10

From 2024 CFPV, EP, TDC and ASP do not start per February anymore

You always have to sign up for the master's of psychology at **two websites:**

1. Studielink,
2. At the website of Psychology, Groningen.

Although in Studielink you can choose only one track, in the application form at the Psychology website you can enter a first and second choice, and these will be used for handling your application.

MAKE YOUR CHOICE CAREFULLY. AFTER THE DEADLINE, YOU CAN NO LONGER SWITCH TO A DIFFERENT TRACK; ALSO NOT DURING THE MASTER PROGRAMME!

For students with a non-Dutch diploma there is an admissions fee of 100 euros



Limited capacity per master's track

Total number of places for the academic year 2023 - 2024.

Especially the clinical tracks are really popular. We don't expect the tracks THP and ACN to get full (but no guarantees)

	KP	CN	KN	ACN	EP	ASP	CFPV	O	THP	TDC	WOP	
	47	10	30	22	14	31	32	19	20	34	41	Sep
	21	5	15	6	0	0	0	7	4	0	12	Feb



Selection procedure

- › When there are more applicants than available places
- › Test about topics within the field of psychology, from many subdisciplines, and also on research methods and statistics
- › Around the 1st of May (start September)
- › Around the 10th of November (start February)
- › Information about the test and example questions are available on the website



Placement procedure

- › Applications will be split in High Score category and Low Score category
- › Drawing of lots between students in High and that have written a serious motivation letter
- › If there are still places left, they will be distributed by lot among those in Low
- › First choice full? If there are for your second choice still available places, you might get a place there





You didn't get a place?

- › You can try again next starting moment
- › You can partake as many times as you want.



Don't meet the master's requirements?

| 15

- › Pre-master

Or it might be possible to

- › Get rid of deficiencies via Open Universiteit or a different research/ academic university



Contact information

Admissions board:

Toelatingscommissie.masterpsy@rug.nl

Selection:

selection.masterpsy@rug.nl

Study advisors

- › Book an (Google Meet) appointment via the Student Service Desk
050-363 6301 or contact us by email: studieadvies.psy@rug.nl

More information:

<https://www.rug.nl/masters/psychology/>