



university of
groningen

university college groningen

14-10-2015 |

Major Cognition & Behavior

Academic director: Tom Postmes

t.postmes@rug.nl



About the major

- Individual Cognition
- Social relations
- Society
- Technology...

Behavior



How does studying at UCG help address societal challenges?

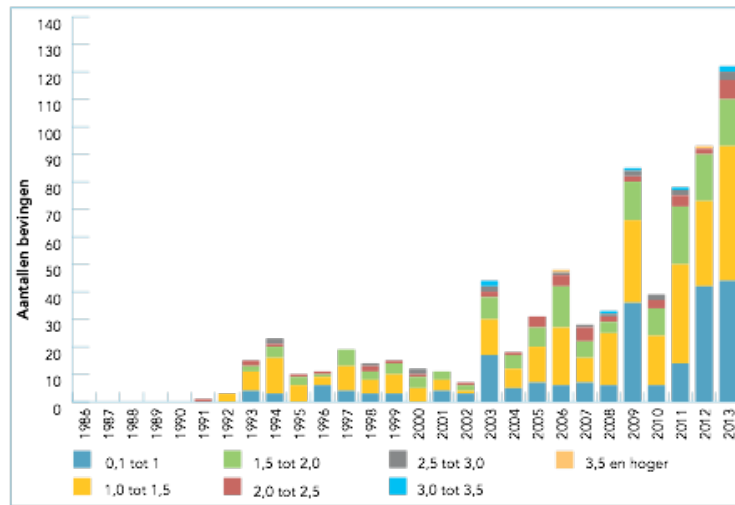
An illustration based on a current project



Earthquakes in North-East Groningen:
Well-being and a sustainable future

Tom Postmes, Katherine Stroebe with
GGD Groningen, National Coördinator Groningen

Earthquakes in NE Groningen: Many small earthquakes are causing a major problem



Figuur 4: Aantal aardbevingen in Groningen en de magnitudes daarvan in de periode 1986-2013. (Bron: NAMplatform.nl, d.d.25-07-2014)

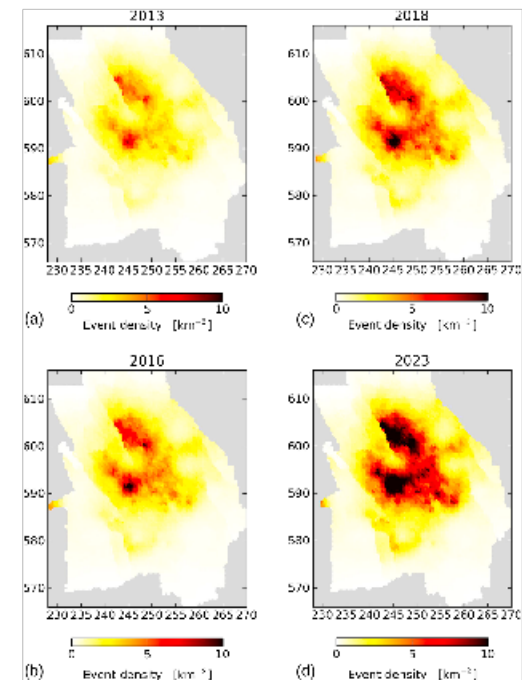


Figure 21. Event density maps for induced seismicity since the start of gas production up to 2013, 2016, 2018, and 2023 based on the seismicity model of the Groningen field according to the linear poroelastic compaction model and the 2013 gas production plan.



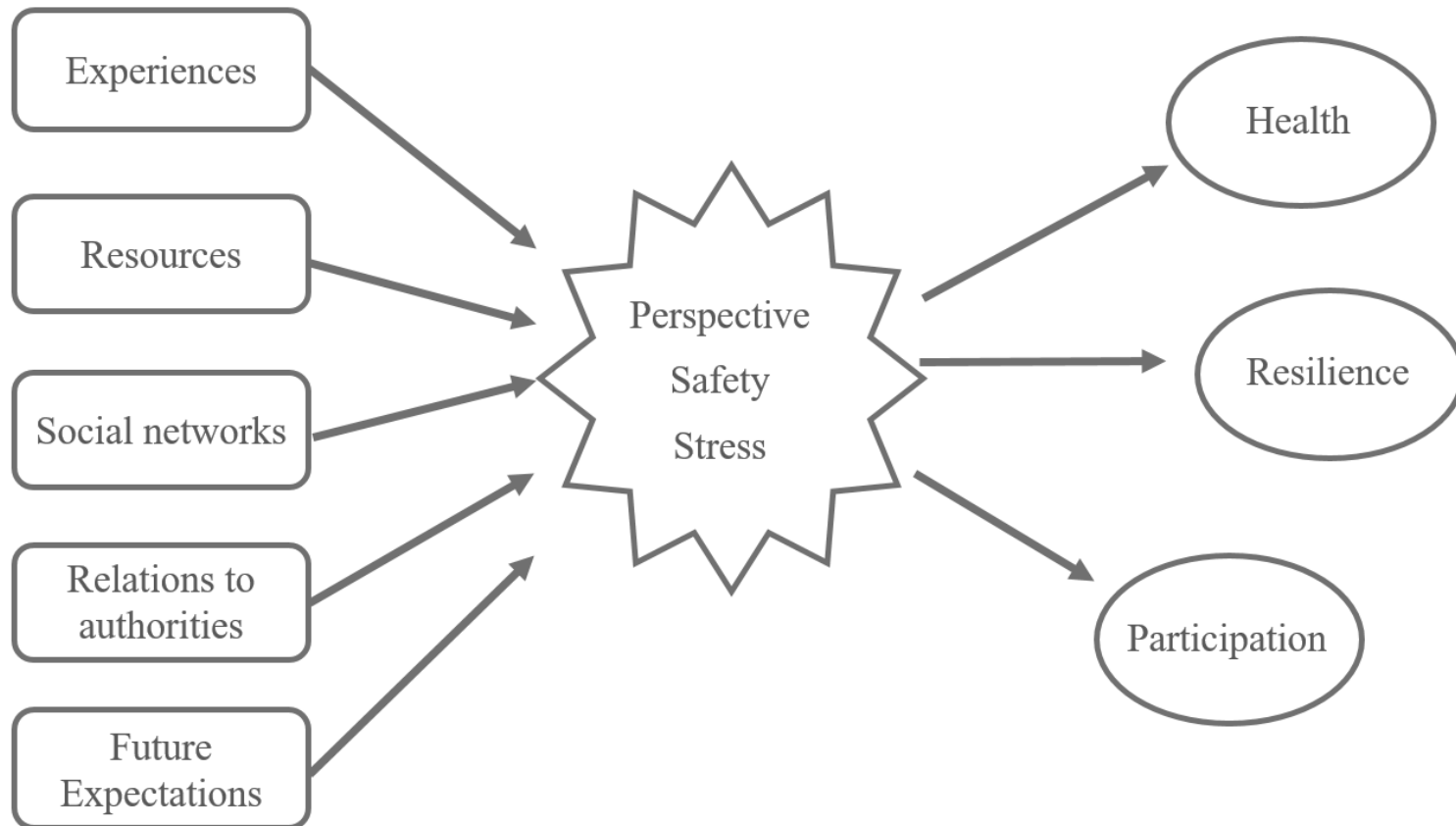
Sources of distress

- › Safety issues for the population were ignored
- › Trust in authorities has been eroded
- › Uncertainty has increased





A dynamic and multi-disciplinary problem





A trans-disciplinary research approach

- > Core team RUG / GGD / O&S
 - Psychology
 - Sociology
 - Medical and Epidemiological
- > Consultants
 - Economics
 - Spatial Sciences
 - Political Sciences
- Law
- > Local authorities
 - Community, Province
 - NCG
- > Community organisations
 - Social movements, interest groups, business
 - Community representatives



Long-term opportunities: master programmes

Programme	
Admission to programs in..	<ul style="list-style-type: none">• Neuroscience• Psychology (Social, Organizational, Economic, etc.)• Marketing• Clinical and psychosocial epidemiology• Sociology• Pedagogical sciences
Conditional admission	Including all research master programmes
	<ul style="list-style-type: none">• Theology• Movement sciences• Artificial Intelligence• Humanities programmes (communication- and information sciences, etc.)• Economics and business programmes (HRM, Economics, ReMa)



Questions?

Now, or later via
t.postmes@rug.nl