



The Dutch National Research Agenda - what's in it for me?

Young Academy Groningen
Early Career Lunchtime Meeting,
10th of October, 2018

Jan-Willem Mantel
j.w.e.mantel@rug.nl



This presentation

- > The Dutch National Research Agenda
- > What's in it for me?
- > How to get it?

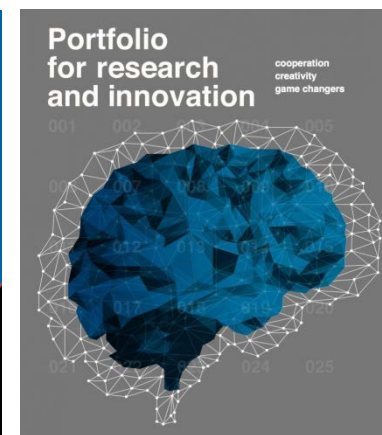




National Research Agenda

A science policy initiative,
aiming to:

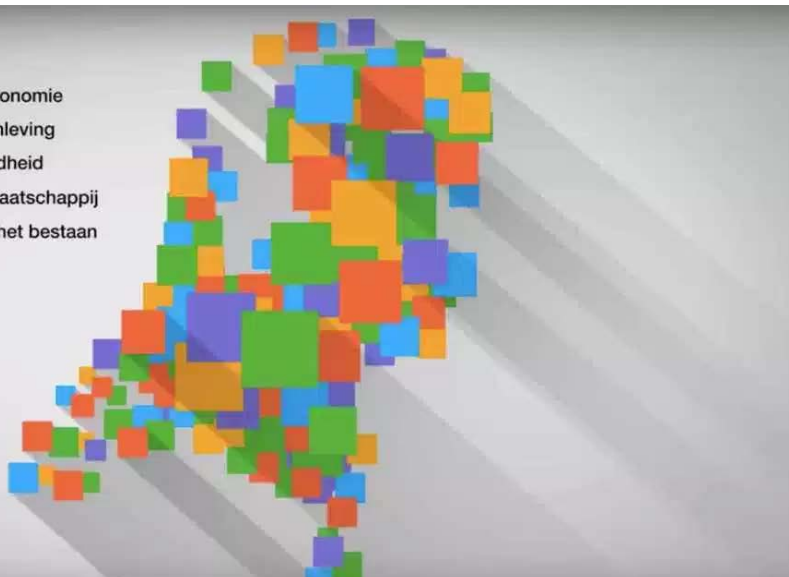
- › make science system more responsive
- › engage sectors of society in research
- › foster trust in science, across all fields of research
- › Finding and adopting science-based solutions, in an open society





National Research Agenda

- › 12k questions, 140 'cluster questions',
25 'routes linking clusters
- › NWO Funding programme

- 
- Mens, milieu & economie
 - Individu en samenleving
 - Ziekten en gezondheid
 - Technologie en maatschappij
 - Bouwstenen van het bestaan



To find out more, go to
www.nwo.nl/nwa



What's in it for me?

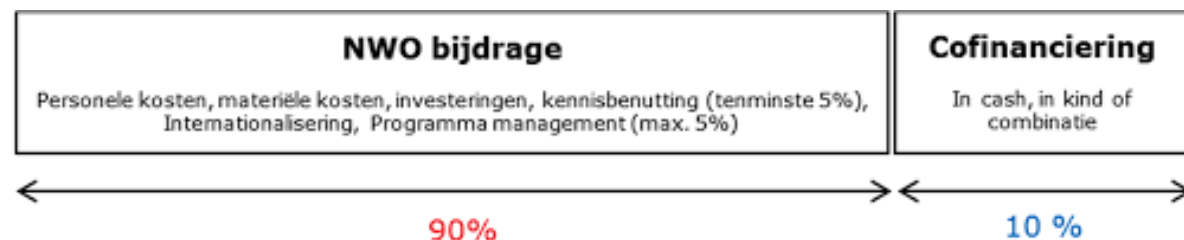
- › **Challenging research**
 - multi-disciplinary, multi-institute
 - driven by 'big questions'
 - public engagement

› A leadership role

(.....) *Involvement and active role of junior researchers in the consortium (.....)*



Target practice



How to get it?

› Take it seriously: scientifically

Hoe werkt de natuur, van basisprincipes tot complexe gevolgen?

NWA, NN: route 15 question

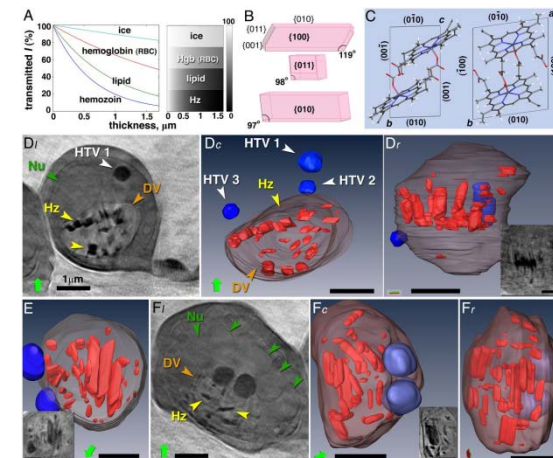
(How does nature work, from basic principles to complex consequences?)

Ik zou graag hebben dat u met voorrang uitzoekt hoe een levende cel eigenlijk precies werkt.

NWA, NN: route 15 question (Please prioritise finding out just how a living cell actually operates.)

It is not difficult to pose questions to which we have no answers. It requires a whole lot more knowledge and expertise to ask questions that can indeed be answered through new experiments and sharp analyses.

't Hooft, G., Vandoren, S., & 't Hooft, S. E. (2014). Time In Powers Of Ten: Natural Phenomena And Their Timescales. Singapore: World Scientific.





How to get it?

› Take it seriously: politically

The screenshot shows a presentation slide with the following content:

- university of groningen / faculty of science and engineering
- 02-10-2018 | 3
- National Research Agenda**
- A science policy initiative, aiming to:
 - › make science system more responsive
 - › engage sectors of society in research
 - › foster trust in science, across all fields of research
 - › Finding and adopting science-based solutions, in an open society
- Two portraits of women.
- Logos for 'nationale wetenschaps agenda' and 'Portfolio for research and innovation'.
- Logos for NWO, RINAW, TNO, VRIJ, VRIJ NWO, and MKB.

› Get level with (cluster) questions

- 'classics' in your field
- history of your field
- significance, potential of findings
- the scientific enterprise



How to get it?

> Get in touch

