

University of Groningen

Improvement in hypercapnia does not predict survival in COPD patients on chronic noninvasive ventilation

Raveling, Tim; Bladder, Gerrie; Vonk, Judith M; Nieuwenhuis, Jellie A; Verdonk-Struik, Fransien M; Wijkstra, Peter J; Duiverman, Marieke L

Published in:
International Journal of Chronic Obstructive Pulmonary Disease

DOI:
[10.2147/COPD.S169951](https://doi.org/10.2147/COPD.S169951)

IMPORTANT NOTE: You are advised to consult the publisher's version (publisher's PDF) if you wish to cite from it. Please check the document version below.

Document Version
Publisher's PDF, also known as Version of record

Publication date:
2018

[Link to publication in University of Groningen/UMCG research database](#)

Citation for published version (APA):

Raveling, T., Bladder, G., Vonk, J. M., Nieuwenhuis, J. A., Verdonk-Struik, F. M., Wijkstra, P. J., & Duiverman, M. L. (2018). Improvement in hypercapnia does not predict survival in COPD patients on chronic noninvasive ventilation. *International Journal of Chronic Obstructive Pulmonary Disease*, 13, 3625-3634. <https://doi.org/10.2147/COPD.S169951>

Copyright

Other than for strictly personal use, it is not permitted to download or to forward/distribute the text or part of it without the consent of the author(s) and/or copyright holder(s), unless the work is under an open content license (like Creative Commons).

Take-down policy

If you believe that this document breaches copyright please contact us providing details, and we will remove access to the work immediately and investigate your claim.

Downloaded from the University of Groningen/UMCG research database (Pure): <http://www.rug.nl/research/portal>. For technical reasons the number of authors shown on this cover page is limited to 10 maximum.

Improvement in hypercapnia does not predict survival in COPD patients on chronic noninvasive ventilation

Tim Raveling¹
 Gerrie Bladder²
 Judith M Vonk^{3,4}
 Jellie A Nieuwenhuis^{2,3}
 Fransien M Verdonk-Struik⁵
 Peter J Wijkstra^{2,3}
 Marieke L Duiverman^{2,3}

¹Faculty of Medical Sciences, University of Groningen, Groningen, the Netherlands; ²Department of Pulmonary Diseases and Home Mechanical Ventilation, University of Groningen, University Medical Center Groningen, Groningen, the Netherlands; ³Groningen Research Institute of Asthma and COPD (GRIAC), University of Groningen, Groningen, the Netherlands; ⁴Department of Epidemiology, University of Groningen, University Medical Center Groningen, Groningen, the Netherlands; ⁵Primary Care Group Gelders Rivierland, Ochten, the Netherlands

Correspondence: Marieke L Duiverman
 Department of Pulmonary Diseases and Home Mechanical Ventilation, University of Groningen, University Medical Center Groningen, Home Postal Code: AA62, Post Box 30001, 9700 RB Groningen, the Netherlands
 Tel +31 50 361 3200
 Email m.l.duiverman@umcg.nl

Purpose: It has recently been shown that chronic noninvasive ventilation (NIV) improves a number of outcomes including survival, in patients with stable hypercapnic COPD. However, the mechanisms responsible for these improved outcomes are still unknown. The aim of the present study was to identify parameters associated with: 1) an improved arterial partial pressure of carbon dioxide (PaCO₂) and 2) survival, in a cohort of hypercapnic COPD patients treated with chronic NIV.

Patients and methods: Data from 240 COPD patients treated with chronic NIV were analyzed. Predictors for the change in PaCO₂ and survival were investigated using multivariate linear and Cox regression models, respectively.

Results: A higher level of bicarbonate before NIV initiation, the use of higher inspiratory ventilator pressures, the presence of anxiety symptoms, and NIV initiated following an exacerbation compared to NIV initiated in stable disease were associated with a larger reduction in PaCO₂. A higher body mass index, a higher FEV₁, a lower bicarbonate before NIV initiation, and younger age and NIV initiation in stable condition were independently associated with better survival. The change in PaCO₂ was not associated with survival, neither in a subgroup of patients with a PaCO₂ >7.0 kPa before the initiation of NIV.

Conclusion: Patients with anxiety symptoms and a high bicarbonate level at NIV initiation are potentially good responders in terms of an improvement in hypercapnia. Also, higher inspiratory ventilator pressures are associated with a larger reduction in PaCO₂. However, the improvement in hypercapnia does not seem to be associated with an improved survival and emphasizes the need to look beyond PaCO₂ when considering NIV initiation.

Keywords: carbon dioxide, home mechanical ventilation, exacerbation, bicarbonate, chronic obstructive pulmonary disease, respiratory insufficiency

Introduction

COPD is a leading cause of morbidity and mortality worldwide and constitutes a major healthcare burden.^{1,2} In the advanced stages of the disease, patients frequently develop chronic hypercapnic respiratory failure (CHRF). Noninvasive ventilation (NIV) is the standard treatment for patients with CHRF due to restrictive lung disease. In patients with CHRF due to COPD, chronic NIV has led to clinically relevant improvements in dyspnea, gas exchange, lung function, and health-related quality of life (HRQL), when sufficient inspiratory pressures and backup respiratory rates were applied.³⁻⁵ This so called high-intensity NIV is aimed at a substantial reduction in arterial partial pressure of carbon dioxide (PaCO₂).⁵ A randomized controlled trial (RCT) by Köhnlein et al, using this NIV strategy, was the first to demonstrate a survival benefit in stable hypercapnic

COPD patients after 1 year of NIV.⁶ As a result, chronic NIV is nowadays a standard treatment for COPD patients with CHRF and a major indication for home mechanical ventilation (HMV) in Europe.⁷

Nevertheless, it remains unknown how chronic NIV actually leads to these improved outcomes. While it has been hypothesized that a substantial reduction in hypercapnia is responsible for the merits of NIV and improved survival of patients on chronic NIV, a survival benefit has also been shown without a change in daytime hypercapnia and not all studies showing a reduction in hypercapnia could demonstrate improvements in survival.^{5,8,9} Therefore, chronic NIV might affect outcomes through several different mechanisms. With a growing prevalence of COPD, it is expected that the number of patients requiring NIV will increase. As it is clear that not all patients respond favorably to NIV, it needs to be determined which subgroup benefits most from chronic NIV, before this costly therapy can be implemented on a broader scale.

The aim of the present study was to identify parameters associated with a favorable response to chronic NIV in terms of: 1) change in PaCO₂ after 1 year of NIV and 2) survival, in a cohort of hypercapnic COPD patients treated with chronic NIV.

Patients and methods

This is a prospective observational cohort study of a population of COPD patients treated with chronic NIV by the HMV center of the University Medical Center Groningen from 2005 to 2015. Data were collected in two RCTs; the RECOVER and the RESCUE trial. The RECOVER trial (ClinicalTrials NCT00135538) aimed to investigate the addition of chronic NIV to pulmonary rehabilitation in patients with stable CHRF (daytime PaCO₂ >6.0 kPa). In the RESCUE trial (trial registration number NTR1100), patients with acute respiratory failure (ARF) continued NIV at home, if they had persistent hypercapnia after treatment with ventilator support. Both trials excluded patients with severe cardiac or neuromuscular disease and patients with an apnea–hypopnea index >15 per hour. Medical Ethical Committee approval (Medisch Ethische Toetsingscommissie of the University Medical Center Groningen) and written informed consent were obtained for the two trials.

As part of regular clinical practice in our center, COPD patients are initiated on chronic NIV in addition to pulmonary rehabilitation and are followed prospectively. Patients have an indication for chronic NIV once they have COPD GOLD stage III or IV combined with CHRF (PaCO₂ >6.0 kPa) in a

stable clinical condition. Data from these patients were also analyzed for this study.

Measurements

The following parameters were recorded before NIV initiation (baseline) and during follow-up after 3 and 12 months: demographics, comorbidities, body mass index (BMI), blood gasses, lung function, medication, and ventilator settings. Lung function was measured on patients' own bronchodilators, and arterial blood gasses were drawn with the regular amount of oxygen applied. In patients initiated outside the trials, 3- and 12-month follow-up outcomes were collected between 2–3 months and 9–14 months, respectively, after NIV initiation. In both trials, the severe respiratory insufficiency (SRI) questionnaire was administered to assess HRQL. The SRI is a validated and highly specific tool for assessing HRQL in patients with CHRF.¹⁰ The validated Hospital Anxiety and Depression Scale (HADS) was administered in both studies for screening of symptoms of anxiety and depression (HADS score ≥8 point per domain).¹¹ The HADS was not administered in patients initiated on NIV in regular care. These patients were assessed by a qualified psychologist, screening for symptoms of anxiety and depression (as part of our pulmonary rehabilitation program).

In both trials, polygraphies were conducted in patients with a BMI >30 kg/m², who snored or had complaints of disrupted sleep, excessive daytime sleepiness, or morning headache. In patients initiated as part of regular care, polygraphies were conducted only in patients with a clinical suspicion. In addition, medical records were investigated for the diagnosis obstructive sleep apnea (OSA) or treatment with continuous positive airway pressure. Furthermore, the diagnosis of diabetes mellitus, hypertension, coronary artery disease, or congestive heart failure were identified in the medical records of all patients.

Noninvasive ventilation

All patients were initiated on NIV by the same registered nurse according to a standardized high-intensity protocol. NIV was supplied through a pressure cycled ventilator, applying both an inspiratory and expiratory positive airway pressure, with a backup respiratory rate (BiPAP Synchrony[®] and A30[®], Respironics, Murrysville, PA, USA). The effectiveness of NIV during the night was observed by monitoring the transcutaneous PCO₂ and O₂ saturation (TOSCA[®] 500, Linde Medical Sensors AG, Basel, Switzerland). Supplementary oxygen was applied through the ventilator in regular amount. Monitoring of efficacy was done ambulatory using the TOSCA device.

Statistical analyses

Results are presented as mean±SD or medians and interquartile range (IQR). Normality of the distribution was tested by visual inspection of normal probability plots and histograms and checked with the Kolmogorov–Smirnov test. The independent samples *t*-test and chi-squared test, or non-parametric equivalent, were used to compare baseline characteristics of patients initiated in stable condition and patients initiated after an exacerbation. Variables with more than 40% of missing values were excluded from the analysis.

To assess prognostic value of baseline variables on the change in PaCO₂, univariate regression analyses were performed with percentage of change in PaCO₂ after 12 months as the dependent variable and baseline measurements as independent variables, ie, predictors. As the dependent variable is a change score, baseline PaCO₂ was only excluded from this analysis. All variables that were associated with the change in PaCO₂ in the univariate analysis (ie, *P*-value <0.1), and age, gender and diuretic use were entered in the final multivariate linear regression model.

The prognostic value of each baseline variable on mortality was assessed in the intention-to-treat population by a univariate Cox regression from initiation of NIV until

1 January 2016. The proportional hazards assumption was assessed by visual inspection of log–log plots. All variables that were associated with survival in a univariate analysis (*P*-value <0.1) and age, gender, and diuretic use were entered in the final multivariate Cox regression. Due to the strong association between baseline PaCO₂ and bicarbonate levels, the variable with the lowest *P*-value was included.

All statistical analyses were performed using IBM SPSS Statistics V22 (Armonk, NY, USA). A *P*-value <0.05 was considered statistically significant.

Results

Study population

As depicted in Figure 1, 250 patients started with chronic NIV. Ten patients were excluded from the analyses because insufficient data were available. Table 1 shows the baseline characteristics for the whole group as well as separately for the COPD patients initiated in stable condition and for the COPD patients initiated after an episode of ARF. Anxiety and depression symptoms were reported in 39% and 42% of the patients, respectively. Diabetes was present in 19% of the patients, hypertension in 34%, coronary artery disease in 14%, and congestive heart failure in 13% of the patients.

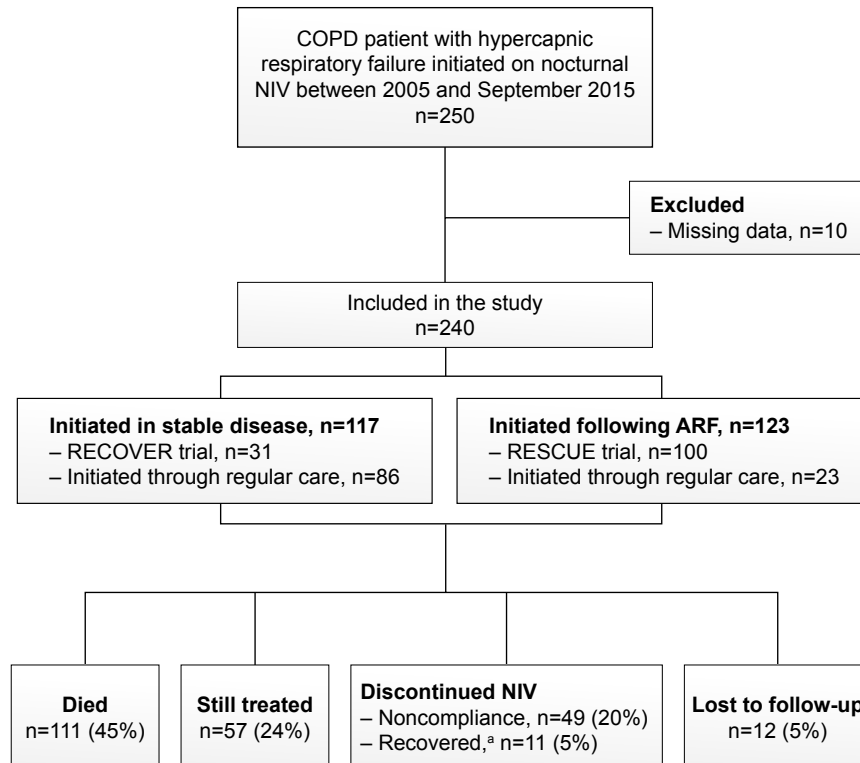


Figure 1 Flowchart of the study.

Note: ^aDiscontinued NIV due to lung transplantation, lung volume reduction therapy, or recovery of respiratory failure.

Abbreviations: NIV, noninvasive ventilation; ARF, acute respiratory failure.

Table 1 Baseline characteristics of the total group of COPD patients (n=240) and separately of patients initiated in stable condition (n=117) and of patients initiated after an episode of ARF (n=123)

	Total group (n=240)	Stable COPD (n=117)	After ARF ^b (n=123)	P-value
Age (years)	62.5 (8.9)	61.8 (9.1)	63.2 (8.6)	0.235
Gender (M), n (%)	104 (43)	50 (43)	54 (44)	0.855
Smoker, n (%)	55 (23)	24 (21)	31 (25)	0.369
Pack years ^a	39 (23–50)	40 (27–45)	38 (21–56)	0.850
Living alone, n (%)	50 (23)	19 (16)	31 (25)	0.087
Exacerbations (n) ^{a,c}	2 (0–3)	1 (0–2)	2 (1–4)	0.001
BMI (kg/m ²)	25.6 (5.9)	26.5 (6.0)	24.8 (5.6)	0.033
PaO ₂ (kPa)	7.9 (1.4)	8.1 (1.4)	7.8 (1.5)	0.269
PaCO ₂ (kPa) ^a	7.4 (6.8–8.4)	7.2 (6.6–7.9)	7.8 (7.1–9.0)	< 0.001
HCO ₃ ⁻ (mmol/L)	33.0 (1.5)	31.7 (3.9)	34.0 (4.7)	< 0.001
FVC (L)	2.1 (0.7)	2.2 (0.6)	2.1 (0.7)	0.188
FEV ₁ (L) ^a	0.63 (0.49–0.81)	0.64 (0.49–0.79)	0.62 (0.49–0.83)	0.741
FEV ₁ /FVC (%)	33 (9)	31 (8)	34 (10)	0.051
TLC (L)	7.3 (1.5)	7.3 (1.5)	7.2 (1.6)	0.918
RV (L)	4.8 (1.3)	4.9 (1.3)	4.7 (1.6)	0.696
RV/TLC (%) ^a	69 (60–72)	69 (62–72)	66 (54–73)	0.475
SRI, total score	49.9 (15.0)	54.6 (14.3)	47.9 (14.9)	0.020
HADS, total score	15.3 (8.7)	13.9 (7.1)	16.0 (9.2)	0.214
LTOT, n (%)	170 (72)	80 (68)	90 (73)	0.352
Medication, n (%)				
Inhaled corticosteroid	210 (88)	107 (92)	103 (84)	0.096
Oral corticosteroid	142 (59)	59 (50)	83 (68)	0.006
Beta agonist	233 (98)	113 (97)	120 (98)	0.379
Anticholinergics	227 (95)	111 (95)	116 (94)	0.941
Theophylline	74 (31)	35 (30)	39 (32)	0.732
Diuretics	105 (44)	55 (47)	50 (41)	0.321

Notes: Last column shows P-value for comparison between patients initiated in stable condition and patients initiated after acute respiratory failure ceased but remaining hypercapnic. Data are presented as mean (SD) or ^amedian (IQR); ^bNIV initiated after acute respiratory failure resolved and patients remained hypercapnic; ^cNumber of exacerbations in 12 months prior to NIV initiation. The values in bold are considered statistically significant ($P < 0.05$). HADS, a higher score indicates more symptoms of anxiety and depression.

Abbreviations: ARF, acute respiratory failure; HADS, Hospital Anxiety and Depression Scale; HCO₃⁻, arterial bicarbonate; LTOT, long-term oxygen therapy; NIV, noninvasive ventilation; PaCO₂, arterial carbon dioxide pressure; PaO₂, arterial oxygen pressure; RV, residual volume; SRI, severe respiratory insufficiency questionnaire; TLC, total lung capacity.

Follow-up

During follow-up, 111 patients died at a median time of 14 (IQR 8–31) months after NIV initiation. All-cause mortality after 1 year was 23%. Fifty-seven patients were still treated at the time of this evaluation (median duration on NIV: 44 [IQR 23–70] months) and 49 patients dropped out because of nontolerance/noncompliance (after a median duration of NIV of 2 [IQR 1–7] months). These patients did not differ from compliant patients in baseline characteristics and comorbidities. In 11 patients, NIV was no longer needed due to lung transplantation (n=8), lung volume reduction therapy (n=1), or recovery of respiratory failure (n=2). Finally, long-term follow-up data of 12 patients could not be retrieved.

Noninvasive ventilation

After 3 months, mean inspiratory positive airway pressure was 21.9±3.9 (IQR 20–24), expiratory positive airway

pressure was 5.6±1.6 (IQR 4–6) cm H₂O, and backup respiratory rate was 15.9±2.8 breaths per minute. Compliance to the ventilator after 3 months was 6.6±2.0 hours per night and 80% of the patients used NIV for more than 5 hours per night. Compliance among patients who died was not different from patients who were alive at the time of the analysis ($P=0.302$), and compliance did not differ between patients feeling anxious ($P=0.520$) or depressed ($P=0.220$) and patients without these symptoms.

Predictors of change in PaCO₂

According to the univariate regression, age, timing of NIV initiation, the SRI total score, and baseline bicarbonate levels were associated with the change in PaCO₂ after 12 months (Table S1). In the multivariate regression model, a higher baseline bicarbonate level and inspiratory pressure, initiation after an exacerbation instead of initiation

Table 2 Prognostic value of baseline parameters for the percentage of change in PaCO₂ after 12 months for the total group of COPD patients according to the multivariate regression model

	ΔPaCO ₂ ^a		
	B	95% CI of B	P-value
Constant	38.84	8.59 to 69.10	0.013
HCO ₃ ⁻ (mmol/L)	-1.29	-1.89 to -0.70	<0.001
NIV started after ARF	-5.54	-10.73 to -0.36	0.036
Anxiety	-7.48	-13.64 to -1.32	0.018
IPAP (cmH ₂ O) ^b	-0.78	-1.49 to -0.07	0.032
Age (years)	0.26	-0.04 to 0.57	0.088
Gender (F)	-0.16	-5.11 to 4.79	0.949
FEV ₁ (% predicted)	-0.19	-0.46 to 0.86	0.177
Depression	-0.71	-5.14 to 6.56	0.810
Diuretics	3.46	-1.44 to 8.37	0.164
Congestive heart failure	-1.32	-7.95 to 5.31	0.693
R ²	0.435		
n	84		

Notes: ^aPercentage of change in PaCO₂ after 12 months, a negative value indicates a decrease in PaCO₂; ^bIPAP after 12 months. The values in bold are considered statistically significant (*P*<0.05).

Abbreviations: ARF, acute respiratory failure; HCO₃⁻, arterial bicarbonate; IPAP, inspiratory positive airway pressure; NIV, noninvasive ventilation; PaCO₂, arterial carbon dioxide pressure.

in stable disease, and the presence of anxiety symptoms were related to a larger decrease in PaCO₂ after 12 months (Table 2).

Predictors of survival

According to univariate regression, age, BMI, FEV₁, PaCO₂, bicarbonate levels, OSA, and timing of NIV initiation were significant determinants of survival (Table S2). Of note, the absolute and percentage of change in PaCO₂ after 12 months were not associated with survival. Therefore, we conducted a subgroup analysis on patients with severe hypercapnia (baseline PaCO₂ >7.0 kPa, (median 8.0 [7.3–9.0] kPa,

n=163)). Also in this subgroup, the change in PaCO₂ after 12 months was not associated with survival.

The multivariate Cox regression revealed that a higher age and baseline bicarbonate levels, and initiation after an exacerbation remained independently associated with an impaired prognosis, while patients with a higher BMI and FEV₁ seemed to have a better prognosis (Table 3). Figure 2 illustrates the prognostic value of the timing of NIV initiation (Figure 2A) and of the percentage of change in PaCO₂ after 12 months (Figure 2B) on survival.

Discussion

The present study suggests that COPD patients with anxiety symptoms and high bicarbonate levels at initiation of NIV benefit most of chronic NIV in terms of improvement in PaCO₂. Also, we confirmed that with higher inspiratory ventilator pressures a more pronounced improvement in gas exchange can be achieved. However, improvements in PaCO₂ do not seem to influence survival. This suggests that NIV might improve survival in a subgroup of patients irrespective of the ability to improve PaCO₂ and emphasizes the need to look beyond PaCO₂ when treating COPD patients with chronic NIV.

Chronic NIV as a treatment for CHRF in COPD patients has long been controversial. In 2014, Köhlein et al published the results of an important landmark study, as it showed an impressive survival benefit when chronic NIV was applied in COPD patients with severe CHRF.⁶ With this study, evidence for the use of NIV received an enormous boost. However, it is still unclear exactly how and why chronic NIV improves survival.

The focus of high-intensity NIV is currently on achieving a maximal reduction in PaCO₂.⁵ Previous studies have shown conflicting results regarding the influence of chronic hypercapnia on prognosis.^{12,13} If hypercapnia is associated with bad prognosis, it would be more logical that by decreasing

Table 3 Prognostic value for baseline parameters on survival according to the multivariate Cox regression analysis

	Parameter estimate	Standard error	HR	95% CI	P-value
Age (years)	0.05	0.02	1.05	1.01 to 1.08	0.008
BMI (kg/m ²)	-0.07	0.03	0.94	0.89 to 0.99	0.011
NIV started after ARF	0.59	0.26	1.81	1.06 to 3.08	0.029
HCO ₃ ⁻	0.06	0.03	1.06	1.00 to 1.12	0.049
FEV ₁ (% predicted)	-0.04	0.02	0.96	0.93 to 0.99	0.007
Diuretics	0.46	0.25	1.59	0.97 to 2.61	0.069
Gender	0.09	0.25	1.09	0.66 to 1.79	0.737
OSA	-0.27	0.55	0.76	0.26 to 2.23	0.620

Notes: Model coefficients: -2 log likelihood 606.568; $\chi^2=38.938$; *P*<0.001; *n*=166. The values in bold are considered statistically significant (*P*<0.05).

Abbreviations: ARF, acute respiratory failure; HCO₃⁻, arterial bicarbonate; NIV, noninvasive ventilation; OSA, obstructive sleep apnea.

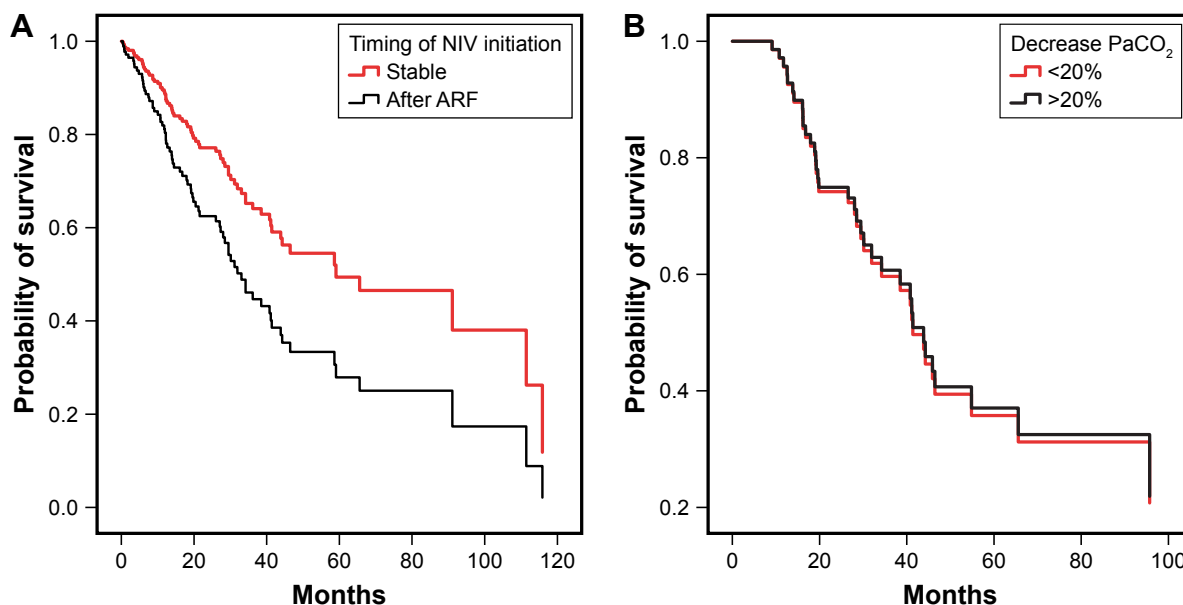


Figure 2 Survival curves of patients initiated on NIV. **(A)** Patients initiated on NIV in stable condition and after a COPD exacerbation, corrected for the remaining predictors. **(B)** Survival curves referring to the percentage of change in PaCO₂ after 12 months for a subgroup of patient (n=69) with baseline PaCO₂ >7.0 kPa.

Abbreviations: ARF, acute respiratory failure; NIV, noninvasive ventilation; PaCO₂, arterial carbon dioxide pressure.

daytime PaCO₂, survival would be positively influenced. In the present study, we did not find this, even not in a separate analysis of those patients with severe hypercapnia before NIV initiation.

The present study did show that the level of arterial bicarbonate at initiation is a strong predictor for both the change in PaCO₂ and prognosis, independent from confounders as diuretic use, which is known to affect arterial bicarbonate. This is interesting as in clinical practice, NIV is both initiated and monitored based on PaCO₂. Budweiser et al demonstrated that arterial base excess, in addition to BMI and hyperinflation, was an independent predictor for prognosis in COPD patients treated with NIV.¹⁴ They suggested that daytime base excess might better represent nocturnal hypoventilation than daytime PaCO₂ as the increased level of base excess is a renal compensatory mechanism for chronically elevated levels of PaCO₂.¹⁴ As bicarbonate is the predominant base contributing to base excess, our study supports this finding. We suggest that this marker of CHRF might be a therapeutic target for NIV and that NIV should be initiated and monitored based on bicarbonate. In addition, this finding suggests that patients with high bicarbonate levels will potentially be better responders to NIV.

The present study also shows that a higher BMI is associated with a better survival, independent from confounders like the presence of OSA. This is not a new finding as a cohort study by Borel et al showed that NIV is associated with better prognosis only in a subgroup of obese patients

(BMI >30 kg/m²),¹⁵ a finding supported by Budweiser et al and Yang et al.^{13,14} We hypothesize that in the obese patients, hypercapnia is probably not solely a marker of severe lung disease. Sleep hypoventilation due to obesity itself can contribute to the hypercapnia in these patients. This mechanism is potentially less harmful to the patient and may explain the better prognosis of these obese patients.

Patients initiated on NIV after an episode of ARF had worse survival rates compared to the patients initiated in stable condition, despite the fact that patients initiated following an acute exacerbation did respond well in terms of improvements in hypercapnia. Analysis revealed that these patients had a larger reduction in PaCO₂ compared to stable patients, independent of bicarbonate levels. The RCT of Struik et al, from which trial patient data were used for the current analysis, revealed that initiating chronic NIV directly after an episode of ARF is not beneficial and that mortality of these patients remains high,⁹ despite the fact that PaCO₂ was reduced more when NIV was applied compared to the standard arm in which spontaneous recovery was awaited. However, a major determinant for future exacerbations and death are a history of exacerbations and hospitalizations due to exacerbations of COPD, regardless of disease severity.^{16,17} As the patients initiated after an exacerbation indeed did suffer from more exacerbations compared to the patients initiated in stable disease, also after the start of the therapy, it was not surprising that the current evaluation identified

that patients initiated after an exacerbation had a worse prognosis compared to the stable patients. Nevertheless, it is encouraging that recent evidence has shown that chronic NIV might prevent exacerbations in a subgroup of frail severe persistent hypercapnic patients, an effect that might eventually also affect survival.^{18,19}

Some findings of our study were surprising. First, patients with anxious or depressive feelings did not have a worse outcome. Physicians are often reluctant toward initiating these patients on NIV as in daily practice, they are known to have difficulties adapting to NIV and show poor compliance. However, in this study, NIV was not terminated more often due to noncompliance in patients feeling anxious or depressed. Furthermore, compliance at 3 months did not differ between patients suffering of these symptoms, and those without anxious or depressed feelings. Although no data are available about the time and effort it took to adapt these patients to the ventilator, they eventually seem to adapt rather well. Notably, the present study revealed that patients with anxiety symptoms responded well to NIV as they demonstrated a larger reduction in PaCO₂, independent from baseline bicarbonate levels (representing severity of hypercapnia). We speculate that anxious patients over time might adopt an unfavorable breathing pattern, with increased respiratory rates that can induce air trapping. If so, NIV has great potential in improving breathing patterns at night, perhaps explaining why these patients seem to respond well to NIV. Therefore, we believe that there is no reason to doubt the indication of NIV in anxious COPD patients with CHRF. Moreover, they might be a subgroup that could benefit most from NIV.

This study confirms that higher inspiratory pressures are necessary for improvements in hypercapnia and hereby strengthens the evidence for high-intensity NIV. Surprisingly, however, compliance was not associated with the change in PaCO₂, a finding not in line with the general consensus. However, compliance of the patients in the present study was excellent. Approximately 80% of the patients used NIV for more than 5 hours per night, which is the suggested minimum to achieve a substantial improvement in hypercapnia and survival.^{15,20} In the Netherlands, the HMV centers accommodate a unique system with comprehensive care and monitoring at the patients' home, frequent home visits, and a 24/7 service in case of problems. We acknowledge that this may enhance compliance. The general thought exists that adherence of COPD patients to the ventilator is poor. The present study indicates that this needs to be reconsidered, at least when sufficient care and monitoring is provided.

Finally, our study does have some limitations. First, we acknowledge the lack of a control group. In addition, missing data were a concern as we had to exclude potential significant parameters as hyperinflation and HRQL from the multivariate analysis.^{21–23} Also, the number of missing data might not be equal between patient initiated in stable condition compared to patients initiated following an exacerbation, as in the latter group more patients were RCT recruited. We also acknowledge that OSA was not assessed by a polygraphy in all patients and therefore possibly leading to an underestimation of the presence of OSA. These limitations might have biased our results. Finally, causes of death could not be retrieved for all patients, so we could not differentiate between COPD and other causes of death.

Conclusion

Patients with anxiety symptoms and patients with high bicarbonate levels at initiation of NIV might be potential responders to NIV in terms of an improvement in hypercapnia. This improvement in hypercapnia, however, seems not to be associated with an improved survival. This finding emphasizes the need to look beyond PaCO₂ when considering NIV initiation, as other mechanisms and targets might be important when applying chronic NIV.

Acknowledgments

Both the RECOVER and the RESCUE trials, from which patient data were used for the current analysis, were funded by the Dutch Lung Foundation. The RESCUE trial was additionally funded by Philips/Respironics, Mediq TEFA, and Stichting Astma Bestrijding.

Disclosure

PJW reports grants and personal fees from Philips Respironics, RESMED, and VIVISOL, and grants from MediqTefa and Air Liquide, outside the submitted work. MD reports grants and personal fees from Philips Respironics, grants from RESMED Ltd, and Breas Medical, and personal fees from Vivisol BV, outside the submitted work. Funding sources had no involvement in the study design and in the collection, analysis, and interpretation of data. The other authors report no conflicts of interest in this work.

References

1. Chapman KR, Mannino DM, Soriano JB, et al. Epidemiology and costs of chronic obstructive pulmonary disease. *Eur Respir J*. 2006;27(1):188–207.
2. Mannino DM. Epidemiology and global impact of chronic obstructive pulmonary disease. *Semin Respir Crit Care Med*. 2005;26(2):204–210.

3. Dreher M, Storre JH, Schmoor C, Windisch W. High-intensity versus low-intensity non-invasive ventilation in patients with stable hypercapnic COPD: a randomised crossover trial. *Thorax*. 2010;65(4):303–308.
4. Duiverman ML, Wempe JB, Bladder G, et al. Two-year home-based nocturnal noninvasive ventilation added to rehabilitation in chronic obstructive pulmonary disease patients: a randomized controlled trial. *Respir Res*. 2011;12:112–9921.
5. Windisch W, Storre JH, Köhnlein T. Nocturnal non-invasive positive pressure ventilation for COPD. *Expert Rev Respir Med*. 2015;9(3):295–308.
6. Köhnlein T, Windisch W, Köhler D, et al. Non-invasive positive pressure ventilation for the treatment of severe stable chronic obstructive pulmonary disease: a prospective, multicentre, randomised, controlled clinical trial. *Lancet Respir Med*. 2014;2(9):698–705.
7. Crimi C, Noto A, Princi P, et al. Domiciliary non-invasive ventilation in COPD: an international survey of indications and practices. *COPD*. 2016;13(4):483–490.
8. Mcevoy RD, Pierce RJ, Hillman D, et al. Nocturnal non-invasive nasal ventilation in stable hypercapnic COPD: a randomised controlled trial. *Thorax*. 2009;64(7):561–566.
9. Struik FM, Sprooten RT, Kerstjens HA, et al. Nocturnal non-invasive ventilation in COPD patients with prolonged hypercapnia after ventilatory support for acute respiratory failure: a randomised, controlled, parallel-group study. *Thorax*. 2014;69(9):826–834.
10. Struik FM, Kerstjens HA, Bladder G, et al. The Severe Respiratory Insufficiency Questionnaire scored best in the assessment of health-related quality of life in chronic obstructive pulmonary disease. *J Clin Epidemiol*. 2013;66(10):1166–1174.
11. Bjelland I, Dahl AA, Haug TT, Neckelmann D. The validity of the Hospital Anxiety and Depression Scale. An updated literature review. *J Psychosom Res*. 2002;52(2):69–77.
12. Aida A, Miyamoto K, Nishimura M, Aiba M, Kira S, Kawakami Y. Prognostic value of hypercapnia in patients with chronic respiratory failure during long-term oxygen therapy. *Am J Respir Crit Care Med*. 1998;158(1):188–193.
13. Yang H, Xiang P, Zhang E, et al. Is hypercapnia associated with poor prognosis in chronic obstructive pulmonary disease? A long-term follow-up cohort study. *BMJ Open*. 2015;5(12):e008909.
14. Budweiser S, Jörres RA, Riedl T, et al. Predictors of survival in COPD patients with chronic hypercapnic respiratory failure receiving noninvasive home ventilation. *Chest*. 2007;131(6):1650–1658.
15. Borel JC, Pepin JL, Pison C, et al. Long-term adherence with non-invasive ventilation improves prognosis in obese COPD patients. *Respirology*. 2014;19(6):857–865.
16. Hurst JR, Vestbo J, Anzueto A, et al. Susceptibility to exacerbation in chronic obstructive pulmonary disease. *N Engl J Med*. 2010;363(12):1128–1138.
17. Müllerova H, Maselli DJ, Locantore N, et al. Hospitalized exacerbations of COPD: risk factors and outcomes in the ECLIPSE cohort. *Chest*. 2015;147(4):999–1007.
18. Murphy PB, Rehal S, Arbane G, et al. Effect of home noninvasive ventilation with oxygen therapy vs oxygen therapy alone on hospital readmission or death after an acute COPD exacerbation: a randomized clinical trial. *JAMA*. 2017;317(21):2177–2186.
19. Ankjærgaard KL, Maibom SL, Wilcke JT. Long-term non-invasive ventilation reduces readmissions in COPD patients with two or more episodes of acute hypercapnic respiratory failure. *Eur Clin Respir J*. 2016;3:28303.
20. Struik FM, Lacasse Y, Goldstein RS, Kerstjens HA, Wijkstra PJ. Nocturnal noninvasive positive pressure ventilation in stable COPD: a systematic review and individual patient data meta-analysis. *Respir Med*. 2014;108(2):329–337.
21. Budweiser S, Harlacher M, Pfeifer M, Jörres RA. Co-morbidities and hyperinflation are independent risk factors of all-cause mortality in very severe COPD. *COPD*. 2014;11(4):388–400.
22. Casanova C, Cote C, de Torres JP, et al. Inspiratory-to-total lung capacity ratio predicts mortality in patients with chronic obstructive pulmonary disease. *Am J Respir Crit Care Med*. 2005;171(6):591–597.
23. Oga T, Taniguchi H, Kita H, et al. Analysis of the relationship between health status and mortality in hypercapnic patients with noninvasive ventilation. *Clin Respir J*. 2017;11(6):772–780.

Supplementary materials

Table S1 Prognostic value of baseline variables for the percentage of change in PaCO₂ after 12 months for the whole group of COPD patients according to the univariate regression model

	ΔPaCO_2^a				
	n ^b	R ²	B	95% CI of B	P-value
Age (years)	105	0.042	0.314	0.022 to 0.606	0.035
Gender (F)	105	0.002	-1.057	-6.120 to 4.005	0.680
BMI	99	0.018	0.290	-0.146 to 0.726	0.191
Smoker	105	0.002	-1.340	-7.086 to 4.406	0.645
NIV started after ARF	105	0.055	-6.061	-10.976 to 1.146	0.016
PaO ₂ (kPa)	102	0.018	-1.127	-2.776 to 0.523	0.178
HCO ₃ ⁻ (mmol/L)	102	0.247	-1.426	-1.919 to -0.932	<0.001
FEV ₁ (% predicted)	99	0.019	0.176	-0.082 to 0.434	0.179
FEV ₁ /FVC (%)	99	0.004	-0.084	-0.347 to 0.179	0.526
RV/TLC (%)	44	0.025	-0.215	-0.631 to 0.202	0.305
Diuretics	105	0.005	1.820	-3.214 to 6.854	0.475
SRI, total score	68	0.110	0.288	0.087 to 0.490	0.006
Comorbid disease					
Obstructive sleep apnea	92	0.007	4.323	-6.622 to 15.268	0.435
Anxiety	96	0.040	-5.449	-10.941 to 0.044	0.052
Depression	95	0.038	-5.118	-10.429 to 0.193	0.059
Diabetes mellitus	102	0.004	-2.083	-8.772 to 4.607	0.538
Hypertension	97	0.007	2.288	-3.214 to 7.791	0.411
Coronary artery disease	105	0.015	3.787	-2.114 to 9.688	0.206
Congestive heart failure	99	0.029	-6.001	-12.993 to 0.890	0.091
NIV settings ^c					
IPAP (cmH ₂ O)	103	0.035	-0.638	-1.297 to 0.021	0.058
EPAP (cmH ₂ O)	103	0.003	-0.421	-1.849 to 1.006	0.560
BURR (breaths per minute)	103	0.004	-0.292	-1.209 to 0.625	0.529
Compliance (hours) ^c	78	0.014	-0.701	-2.048 to 0.647	0.304

Notes: ^aPercentage of change in PaCO₂ after 12 months, a negative value indicates a decrease in PaCO₂; ^bNumber of patients included in the analysis; ^cNIV settings and compliance after 12 months. The values in bold are considered statistically significant ($P < 0.05$).

Abbreviations: ARF, acute respiratory failure; BURR, backup respiratory rate; EPAP, expiratory positive airway pressure; HCO₃⁻, arterial bicarbonate; IPAP, inspiratory positive airway pressure; NIV, noninvasive ventilation; PaCO₂, arterial carbon dioxide pressure; PaO₂, arterial oxygen pressure; RV, residual volume; SRI, severe respiratory insufficiency questionnaire; TLC, total lung capacity.

Table S2 Prognostic value of baseline variables and NIV settings on survival according to univariate Cox regression analysis

	n ^a	HR	95% CI	P-value
Age (years)	233	1.032	1.008 to 1.056	0.008
BMI (kg/m ²)	222	0.938	0.905 to 0.973	0.001
Pack years	169	1.000	0.992 to 1.008	0.981
Gender (female)	233	0.733	0.504 to 1.068	0.106
Living alone	212	0.891	0.548 to 1.448	0.641
NIV started after ARF	233	2.106	1.420 to 3.124	<0.001
PaO ₂ (kPa)	222	0.920	0.794 to 1.067	0.270
PaCO ₂ (kPa)	228	1.331	1.151 to 1.538	<0.001
ΔPaCO ₂ (%) ^b	104	0.988	0.965 to 1.012	0.320
ΔPaCO ₂ (kPa) ^c	104	1.157	0.910 to 1.472	0.234
HCO ₃ ⁻ (mmol/L)	221	1.115	1.067 to 1.165	<0.001
FEV ₁ (% predicted)	217	0.968	0.947 to 0.990	0.005
FEV ₁ /FVC (%)	215	0.993	0.970 to 1.016	0.526
RV/TLC (%)	110	1.036	0.988 to 1.076	0.066
Diuretics	233	1.011	0.695 to 1.471	0.955
SRI, total score	129	0.983	0.966 to 1.000	0.054
Comorbid disease				
Obstructive sleep apnea	192	0.423	0.185 to 0.968	0.042
Anxiety	209	1.347	0.900 to 2.016	0.148
Depression	207	0.849	0.567 to 1.273	0.428
Diabetes mellitus	225	1.369	0.859 to 2.182	0.186
Hypertension	221	0.864	0.574 to 1.301	0.484
Coronary artery disease	222	1.086	0.632 to 1.866	0.765
Congestive heart failure	223	1.206	0.714 to 2.037	0.483
NIV settings ^d				
IPAP (cmH ₂ O)	201	1.005	0.951 to 1.062	0.866
EPAP (cmH ₂ O)	201	0.935	0.812 to 1.076	0.347
BURR (breaths per minute)	201	1.018	0.949 to 1.092	0.623
Compliance (hours) ^d	146	0.934	0.812 to 1.074	0.338

Notes: ^aNumber of patients included in the analysis; ^bPercentage of change in PaCO₂ between baseline and 12 months; ^cAbsolute change in PaCO₂ between baseline and 12 months; ^dNIV settings and compliance after 3 months. The values in bold are considered statistically significant ($P < 0.05$).

Abbreviations: ARF, acute respiratory failure; BURR, backup respiratory rate; EPAP, expiratory positive airway pressure; HCO₃⁻, arterial bicarbonate; IPAP, inspiratory positive airway pressure; NIV, noninvasive ventilation; PaCO₂, arterial carbon dioxide pressure; PaO₂, arterial oxygen pressure; RV, residual volume; SRI, severe respiratory insufficiency questionnaire; TLC, total lung capacity.

International Journal of COPD

Dovepress

Publish your work in this journal

The International Journal of COPD is an international, peer-reviewed journal of therapeutics and pharmacology focusing on concise rapid reporting of clinical studies and reviews in COPD. Special focus is given to the pathophysiological processes underlying the disease, intervention programs, patient focused education, and self management protocols.

This journal is indexed on PubMed Central, MedLine and CAS. The manuscript management system is completely online and includes a very quick and fair peer-review system, which is all easy to use. Visit <http://www.dovepress.com/testimonials.php> to read real quotes from published authors.

Submit your manuscript here: <http://www.dovepress.com/international-journal-of-chronic-obstructive-pulmonary-disease-journal>