

University of Groningen

## NARROW LEAF 7 controls leaf shape mediated by auxin in rice

Fujino, Kenji; Matsuda, Yasuyuki; Ozawa, Kenjiro; Nishimura, Takeshi; Koshiba, Tomokazu; Fraaije, Marco W.; Sekiguchi, Hiroshi

*Published in:*  
MOLECULAR GENETICS AND GENOMICS

*DOI:*  
[10.1007/s00438-008-0328-3](https://doi.org/10.1007/s00438-008-0328-3)

**IMPORTANT NOTE:** You are advised to consult the publisher's version (publisher's PDF) if you wish to cite from it. Please check the document version below.

*Document Version*  
Publisher's PDF, also known as Version of record

*Publication date:*  
2008

[Link to publication in University of Groningen/UMCG research database](#)

*Citation for published version (APA):*

Fujino, K., Matsuda, Y., Ozawa, K., Nishimura, T., Koshiba, T., Fraaije, M. W., & Sekiguchi, H. (2008). NARROW LEAF 7 controls leaf shape mediated by auxin in rice. *MOLECULAR GENETICS AND GENOMICS*, 279(5), 499-507. <https://doi.org/10.1007/s00438-008-0328-3>

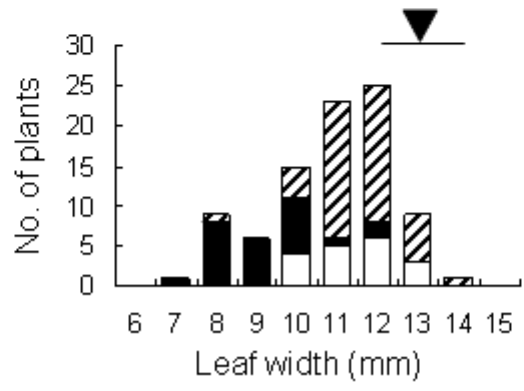
### Copyright

Other than for strictly personal use, it is not permitted to download or to forward/distribute the text or part of it without the consent of the author(s) and/or copyright holder(s), unless the work is under an open content license (like Creative Commons).

### Take-down policy

If you believe that this document breaches copyright please contact us providing details, and we will remove access to the work immediately and investigate your claim.

*Downloaded from the University of Groningen/UMCG research database (Pure): <http://www.rug.nl/research/portal>. For technical reasons the number of authors shown on this cover page is limited to 10 maximum.*



FAD-binding motif

**NAL7** 1 MQCQQKQNAAGCGGCDNASPCIVLDGPIIIVGAGPSGLAVAATLRQHGAPFTTVVERSCGVADLWTRTYDRLRLHLPRVFCR  
**YUCCA** 1 -----MESHPHNKTDQTHIILVHGPIIIGAGPSGLATSACLSSRCVPSLILERSDSIASLWRSKTYDRLRLHLPRHFCR  
**FLOOZY** 1 -----MSCKEKEDTQQKWLWVWCPPIIIGAGPSGLAVSACLKENGCVPSLILERSDCIASLWQHKTYDRLKLHLPRQFCQ  
**Consensus** 1 \* . . : : .\*\*\*\*:\*\*\*\*\*. \* \* ..\*.\* : :\*\*\*\*. :\*.\*\* :\*\*\*\*\*:\*\*\*\*\* \*\*.

**NAL7** 81 LPHVAFPPDFPTYTKHDFLRYLHESYAARFAIAPLLRRTVTRAWYDHPASLWRVTTTTSSSATSVITFYASPWLVWASG  
**YUCCA** 76 LPLLDFPEYYPKYPSKNEFLAYLESYASHFRIAPRFNKNVQNAAYDSSSCFWRVKTHDN-----TEYLSKWLIVATG  
**FLOOZY** 74 LPLEGFDPDNFKYPTKRQFISYLESYAKHFSINPKYRQAVQVAEFDHVSQFWRVQTQN-----FQYFSKWLIVATG  
**Consensus** 45 \*\* . \*\* :\*.\*\*:\*.:\*:\* \*\*.\*\*\* : \* \* \* . : \* \* : \* :.:\*:\* \* : \* \* \*\*:\*:\*\*

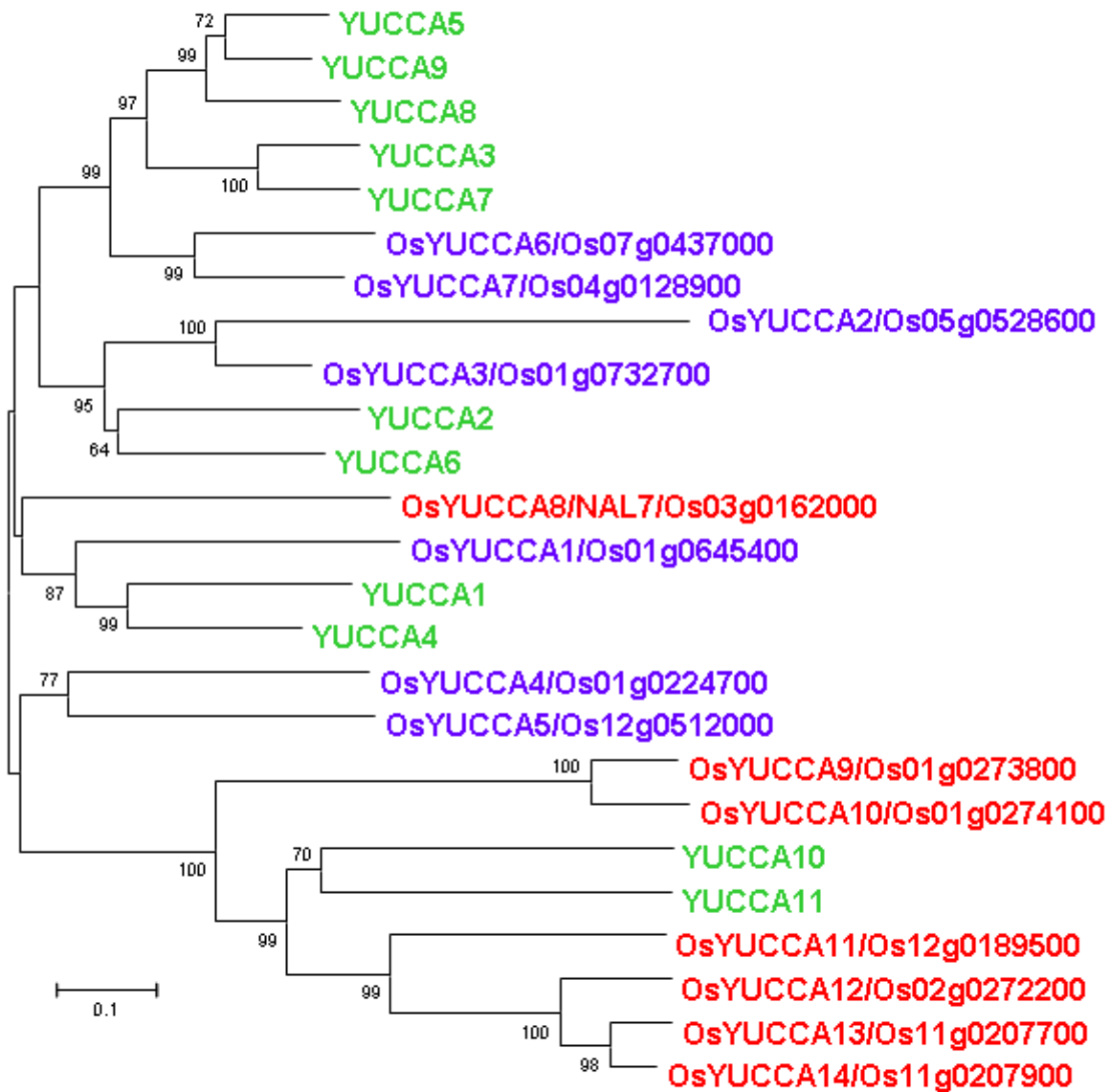
NADPH-binding motif

**NAL7** 161 ENAEVVPKVKGRERFAG-EALHSSFYRSGERFRGMKVLVVGCCNSCMEMLDLCEHGAMPFMSVRSQVHVLPREMFGAS  
**YUCCA** 148 ENADPYFPPIPGRRKFSGCKIVHAS EYKSGEEFRQKVLVVGCCNSCMEISLDLVRHNASPHLVVNTVHVLPREILGVS  
**FLOOZY** 145 ENAEPVIPNIQCMDKFKC-PVMHTSLYKSGTEFNQKVLVVGCCNFGMEVSLDLCPHNAIPHMVARNVHILPREMLGIS  
**Consensus** 88 \*\*\*: .\*: : \* .: \* \* :\*: \*:\* \*\* .\*. .\*\*\*:\*\*\*\*\*:\*\*\* .\*. \* .: .\*. \*\*:\*:\*\*:\*\*\* \*

**NAL7** 240 TFGIAMKLLKQLPIKMDRFLLLVARNVLCGT EKYGLKRPKLCPL EIKNITGKSPVLDVGAWSLIKSCNIKIVPEVESFS  
**YUCCA** 228 TFCVGMTLLKCLPLRLVDFKFLLLMANLSFGNTDRLGLRRPKTGPL EIKNVTGKSPVLDVGAWSLIRSGMIQIMEGVKEIT  
**FLOOZY** 224 TFSMAMALLKCLPLRIVDKFLLLVANLT LGNTDKLGLRRPKTGPL EIKNATGKTPVLDVGAWSQIKAGKIQIVHAVKEIT  
**Consensus** 140 \*\*.:\* \*\*:\* \*\*:\*:\*\*:\*\*\*:\*\*\*:\*. : :\*: :\*: \*\*:\*\*\* \*\*:\*:\*\* \*\*\*:\*\*\*\*\* \* \*:\* \*:\*: \*.::

**NAL7** 320 GNGARFVDGNEMAFDAVIFATGYRSNVP SWLQEDGELFTEEGKLRSSGSSSEWRWRGPNGLYCVGFSGRGLLGACADALR  
**YUCCA** 308 KKGAKFMDGQEKDFDSIIFATGYRSNVP T WLQ-CGDFFTDDGMPKTPFPNG---WRGCKGLYTVGFTRRGLLGTASDAVK  
**FLOOZY** 304 KIGAKFVDGKEGEFDSIILATGYRSNVP SWLK-GTEFFT BQGMPKTPFPNG---WKGENGLYTVGFTRRGLLGTACDAKN  
**Consensus** 204 \*\*\*:\*:\*\* \* \*\*:\*:\*\*:\*\*\*:\*\*\*:\*\*\*. : :\*\*\*:\*\*\* :. . . . \*:\* :\*\*\* \*\*\*: \*\*\*\*\*:..\*\* .

**NAL7** 400 AAADIAGRWQETQQAANISV-----  
**YUCCA** 384 IAGEIGDQWDEIKGSTRNMCSSRFVFTSKS--  
**FLOOZY** 380 IARDIGDEWPKYKGFCKNFCISRNLSDSQGICF  
**Consensus** 260 \* :\*...\*:. . . .



HY *nal7* 109-1 109-2 102-1 102-2 102-3 102-4 108-1 108-2 110-1 110-2

