

## University of Groningen

### On the move

Kos, Claire

**IMPORTANT NOTE: You are advised to consult the publisher's version (publisher's PDF) if you wish to cite from it. Please check the document version below.**

*Document Version*

Publisher's PDF, also known as Version of record

*Publication date:*

2017

[Link to publication in University of Groningen/UMCG research database](#)

*Citation for published version (APA):*

Kos, C. (2017). *On the move: Towards understanding the neural basis of apathy*. Rijksuniversiteit Groningen.

**Copyright**

Other than for strictly personal use, it is not permitted to download or to forward/distribute the text or part of it without the consent of the author(s) and/or copyright holder(s), unless the work is under an open content license (like Creative Commons).

**Take-down policy**

If you believe that this document breaches copyright please contact us providing details, and we will remove access to the work immediately and investigate your claim.

*Downloaded from the University of Groningen/UMCG research database (Pure): <http://www.rug.nl/research/portal>. For technical reasons the number of authors shown on this cover page is limited to 10 maximum.*

University of Groningen

# ON THE MOVE

TOWARDS UNDERSTANDING  
THE NEURAL BASIS OF APATHY

**Claire Kos**

ISBN printed version  
ISBN digital version

978-90-367-9716-0  
978-90-367-9715-3

© C. Kos, Groningen 2017

Cover design and lay-out  
Printed by

Ellen Beck, [www.ellenbeck.nl](http://www.ellenbeck.nl)  
Netzodruk, [www.netzodruk.nl](http://www.netzodruk.nl), 100% recycled paper

Paranymphs  
Nicky Klaasen  
Michelle Servaas



university of  
 groningen



umcg





rijksuniversiteit  
 groningen

# On the move

Towards understanding the neural basis of apathy

## Proefschrift

ter verkrijging van de graad van doctor aan de  
Rijksuniversiteit Groningen  
op gezag van de  
rector magnificus prof. dr. E. Sterken  
en volgens besluit van het College voor Promoties.

De openbare verdediging zal plaatsvinden op

woensdag 21 juni 2017 om 14.30 uur

door

**Claire Kos**

geboren op 25 maart 1987  
te Naarden

**Promotor**

Prof. dr. A. Aleman

**Copromotores**

Dr. H. Knegtering

Dr. M. J. van Tol

**Beoordelingscommissie**

Prof. dr. S. Dollfus

Prof. dr. E.J.A. Scherder

Prof. dr. G.H.M. Pijnenborg

# TABLE OF CONTENT



**Chapter 1 • Page 7**  
GENERAL  
INTRODUCTION



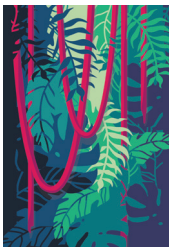
**Chapter 2 • Page 19**  
NEURAL CORRELATES OF  
APATHY IN PATIENTS WITH  
NEURODEGENERATIVE  
DISORDERS, ACQUIRED  
BRAIN INJURY, AND  
PSYCHIATRIC DISORDERS



**Chapter 3 • Page 51**  
NEURAL BASIS OF SELF-  
INITIATIVE IN RELATION  
TO APATHY IN A NON-  
CLINICAL POPULATION



**Chapter 4 • Page 73**  
APATHY IS RELATED TO  
REDUCED ACTIVATION IN  
COGNITIVE CONTROL REGIONS  
DURING SET-SHIFTING



**Chapter 5 • Page 91**  
CAN ACTIGRAPHY YIELD  
VALUABLE INFORMATION  
ON APATHY IN PATIENTS  
WITH SCHIZOPHRENIA?  
ASSOCIATIONS WITH  
CLINICAL MEASURES  
AND NEUROIMAGING OF  
ACTION INITIATION



**Chapter 6 • Page 115**  
PREDICTING RESPONSE TO rTMS  
TREATMENT IN PATIENTS  
WITH SCHIZOPHRENIA FROM  
BRAIN MORPHOLOGY



**Chapter 7 • Page 131**  
SUMMARY AND  
GENERAL DISCUSSION

LIST OF ABBREVIATIONS .....	Page 144
REFERENCES .....	Page 146
NEDERLANDSE SAMENVATTING .....	Page 161 (DUTCH SUMMARY)
CURRICULUM VITAE .....	Page 170
PUBLICATION LIST .....	Page 171
DANKWOORD .....	Page 172 (ACKNOWLEDGEMENTS)

