

University of Groningen

## Exploiting aneuploidy-imposed stresses and coping mechanisms to battle cancer

Zhou, Lin; Jilderda, Laura J; Fojjer, Floris

*Published in:*  
Open Biology

*DOI:*  
[10.1098/rsob.200148](https://doi.org/10.1098/rsob.200148)

**IMPORTANT NOTE: You are advised to consult the publisher's version (publisher's PDF) if you wish to cite from it. Please check the document version below.**

*Document Version*  
Publisher's PDF, also known as Version of record

*Publication date:*  
2020

[Link to publication in University of Groningen/UMCG research database](#)

*Citation for published version (APA):*

Zhou, L., Jilderda, L. J., & Fojjer, F. (2020). Exploiting aneuploidy-imposed stresses and coping mechanisms to battle cancer. *Open Biology*, 10(9), 200148. <https://doi.org/10.1098/rsob.200148>

**Copyright**

Other than for strictly personal use, it is not permitted to download or to forward/distribute the text or part of it without the consent of the author(s) and/or copyright holder(s), unless the work is under an open content license (like Creative Commons).

**Take-down policy**

If you believe that this document breaches copyright please contact us providing details, and we will remove access to the work immediately and investigate your claim.

*Downloaded from the University of Groningen/UMCG research database (Pure): <http://www.rug.nl/research/portal>. For technical reasons the number of authors shown on this cover page is limited to 10 maximum.*

Review



**Cite this article:** Zhou L, Jilderda LJ, Fojjer F. 2020 Exploiting aneuploidy-imposed stresses and coping mechanisms to battle cancer. *Open Biol.* **10**: 200148.  
<http://dx.doi.org/10.1098/rsob.200148>

Received: 31 May 2020  
Accepted: 30 July 2020

**Subject Area:**  
cellular biology/molecular biology

**Keywords:**  
chromosomal instability, aneuploidy, cancer, aneuploidy tolerance, intervention

**Author for correspondence:**  
Floris Fojjer  
e-mail: [f.fojjer@umcg.nl](mailto:f.fojjer@umcg.nl)

# Exploiting aneuploidy-imposed stresses and coping mechanisms to battle cancer

Lin Zhou, Laura J. Jilderda and Floris Fojjer

European Research Institute for the Biology of Ageing, University of Groningen, University Medical Center Groningen, 9713 AV, Groningen, The Netherlands

FF, 0000-0003-0989-3127

Aneuploidy, an irregular number of chromosomes in cells, is a hallmark feature of cancer. Aneuploidy results from chromosomal instability (CIN) and occurs in almost 90% of all tumours. While many cancers display an ongoing CIN phenotype, cells can also be aneuploid without displaying CIN. CIN drives tumour evolution as ongoing chromosomal missegregation will yield a progeny of cells with variable aneuploid karyotypes. The resulting aneuploidy is initially toxic to cells because it leads to proteotoxic and metabolic stress, cell cycle arrest, cell death, immune cell activation and further genomic instability. In order to overcome these aneuploidy-imposed stresses and adopt a malignant fate, aneuploid cancer cells must develop aneuploidy-tolerating mechanisms to cope with CIN. Aneuploidy-coping mechanisms can thus be considered as promising therapeutic targets. However, before such therapies can make it into the clinic, we first need to better understand the molecular mechanisms that are activated upon aneuploidization and the coping mechanisms that are selected for in aneuploid cancer cells. In this review, we discuss the key biological responses to aneuploidization, some of the recently uncovered aneuploidy-coping mechanisms and some strategies to exploit these in cancer therapy.

## 1. Introduction

Aneuploidy, an abnormal number of chromosomes in cells, affects the majority of cancers, ranging from 26% in thyroid carcinoma to 99% of the glioblastomas and testicular germ cell tumours [1,2]. Aneuploidy is caused by defects in the process of chromosome segregation, collectively referred to as chromosomal instability (CIN) [3]. However, cells can also be aneuploid without exhibiting CIN, for which the most well-known example is Down syndrome, in which cells carry an extra copy of chromosome 21 without a CIN phenotype [4]. The spindle assembly checkpoint (SAC) acts as a safeguard against CIN by delaying anaphase onset until all chromosomes are properly aligned and attached on the metaphase plate [5]. Indeed, defects in SAC genes such as *Mad1*, *Mad2*, *BUB3* and *BUBR1* lead to CIN and aneuploidy [6–9]. Also other non-SAC genes have been implicated with CIN phenotypes, including CENP-E [10], SPAG5 [11], Knl1 [12] and many others.

Despite being a hallmark feature of cancer cells, aneuploidy will initially cause growth defects to untransformed cells [13–16]. The fact that aneuploidy is initially toxic to cells but yet frequently occurring in cancer is referred to as the aneuploidy paradox and suggests that aneuploid cells must develop aneuploidy-tolerating mechanisms to cope with CIN and adopt a malignant fate [25]. When sustained, CIN will yield a progeny of cells with variable aneuploid karyotypes that drive tumour evolution and that can help cells to adapt to the initial growth defects imposed by aneuploidy and challenges of the tumour microenvironment. While further work is still required to better understand the interaction between aneuploid cells and the tumour microenvironment [17–20], karyotype evolution provides an important explanation for why CIN

is associated with tumour progression, tumour relapse, metastasis and poor prognosis [21–24].

In this review, we aim to give an overview of the initial stresses that aneuploidy imposes on cells, some of the mechanisms that can lead to aneuploidy tolerance and how these mechanisms can potentially be exploited in aneuploid cancer therapy.

## 2. The paradox of aneuploidy in tumorigenesis

Several recent studies have demonstrated a clear relation between aneuploidy and tumorigenesis. For instance, specific trisomies induced in mouse embryonic stem (ES) cells were shown to yield increased neoplastic potential [26], and a study in immortalized mouse embryonic fibroblasts (MEFs) demonstrated that single chromosome losses in tetraploid MEFs led to increased CIN, DNA damage and tumour formation when these cells were transplanted into immunocompromised mice [27]. Aneuploidy is also correlated with enhanced adaptability and malignant transformation of human cells. For example, while aneuploidy suppresses proliferation of human aneuploid DLD1 cells under standard culture conditions, aneuploid DLD1 cells outcompeted their euploid counterparts when placed under less favourable conditions, such as serum depletion, or when cultured in the presence of genotoxic compounds [20]. Similarly, aneuploid clones within human colorectal cancer cultures show a selective advantage and an increase in tumorigenic behaviour under stress conditions [20].

It has also been suggested that aneuploidy in a triploid or tetraploid cell can lead to further chromosomal instability, thereby promoting tumour evolution and tumorigenesis [30,31]. This process might well directly start after tetraploidization as the molecular machinery of tetraploid cells already displays molecular signatures that prepare cells for CIN tolerance. Further work is required to unveil the molecular adaptations that tetraploid cells and their aneuploid descendants undergo on their way to become a cancer cell [32]. Indeed, several studies have shown that the induction of CIN can lead to the development of cancer. For instance, the loss of the mitotic checkpoint components *Mad1* and *Mad2* predisposes mice to chromosomal instability and the development of spontaneous tumours, although tumours are sporadic and occur with long latencies [6,7]. Similarly, the overexpression of the kinetochore protein *Hec1* leads to hyperactivation of the mitotic checkpoint, thereby causing CIN and tumorigenesis in mice [33]. Accordingly, mosaic variegated aneuploidy syndrome (MVA) patients, who have mutations in the centrosomal protein *CEP57* or in the SAC protein *BUBR1*, are highly susceptible to childhood cancers, further underscoring that ongoing CIN predisposes to cancer [34,35]. Moreover, CIN is associated with drug resistance, most likely by expediting the generation of new karyotypes that promote tumour cell evolution [36]. For example, it has been shown that colorectal cancers cells that exhibit a CIN phenotype display intrinsic multidrug resistance compared to chromosome stable cell lines [37]. Also in multiple myeloma, CIN has been shown to drive tumour heterogeneity and to underlie acquired drug resistance [38,39]. Finally, CIN can promote tumour relapse. For instance, the induction of CIN by overexpression of *Mad2* greatly promotes tumour

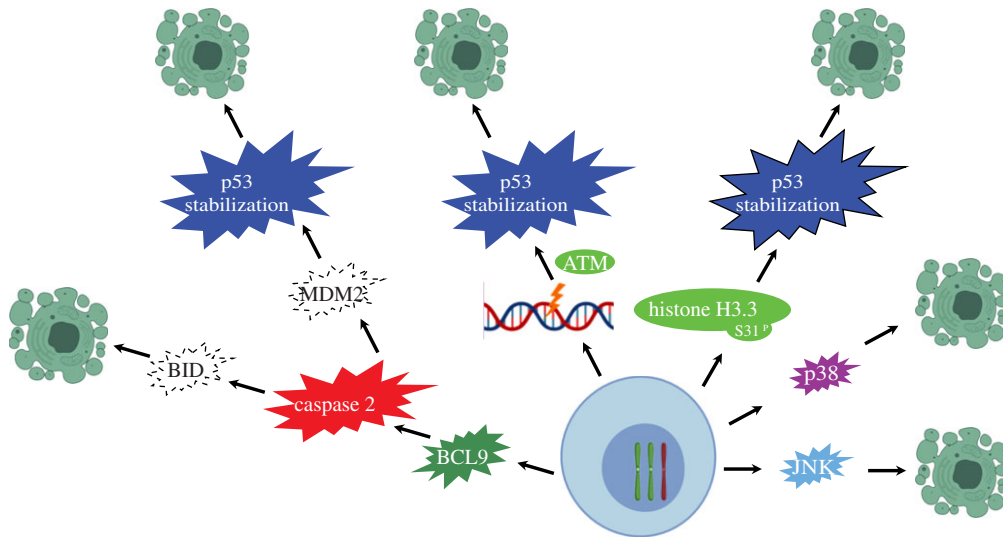
recurrence in an inducible K-Ras-driven lung cancer model even when the initial mutant K-Ras driver is alleviated [40].

On the other hand, aneuploidy has been shown to suppress cell growth. For example, the experimental introduction of extra chromosomes in yeast cells revealed that aneuploid cells grow slower than their euploid counterparts due to defects in cell cycle progression, altered metabolic pathways and protein folding distress [14]. Induced aneuploidy in MEFs [15,16] and human cells [41] was also shown to negatively impact proliferation and metabolism and to induce stress responses. Similarly, tumour-suppressive effects have been observed in a CIN setting. For example, reduced expression of the centromere protein *CENP-E* leads to CIN and aneuploidy *in vitro* and *in vivo* and while this mildly predisposes mice to haematopoietic and lung malignancies, *CENP-E* heterozygous mice are more resistant to chemically and genetically induced tumours suggesting that CIN can also act tumour suppressive [13]. The latter is possibly explained by the fact that the chemical insults and genetic predisposition tested (*p19<sup>ARF</sup>* loss) further increase the CIN rate, thus elevating CIN to levels too toxic for cells [42]. Similarly, the reduction of *in vivo* *BubR1* protein levels enhances the risk for colon cancer but decreases the chance of tumours in the small intestine [43]. Thus, CIN can promote tumorigenesis and restrain tumours, which might depend on the (epi)-genetic context such as the cell type in which the CIN occurs in, but also on CIN rates. For instance, CIN will lead to a reshuffling of oncogenes and tumour suppressor genes and can thereby contribute to cancer genome evolution. However, when provoked in mouse models, CIN has shown variable potency to cause tumorigenesis [44], which might stem from the difference in CIN rates in these mouse models [42], the gene mutations driving the CIN phenotype and the tumour types they develop. Indeed, recent findings are suggesting that CIN rates hold prognostic value for the clinic for several cancers. For example, patients that suffer from ER-negative breast cancer with extremely high CIN rates have a better prognosis than patients with intermediate CIN rates [23]. A similar relationship was found for ovarian cancer, non-small-cell lung cancer and gastric cancer [23]. Accordingly, cancers displaying intermediate copy number variations are associated with the worst overall survival in a pan-cancer analysis [36]. These findings imply that drug-imposed increase of CIN rates could offer a powerful means to treat aneuploid tumours with intermediate CIN rates, increasing CIN beyond the critical point of ‘tolerable’ genomic instability.

However, measuring CIN rates in primary tumours is not trivial [45]. Single-cell whole-genome sequencing (scWGS) is an increasingly popular method to determine intratumour karyotype heterogeneity as an estimate for the CIN rates in a tumour [45]. As such, scWGS has become a powerful tool to estimate CIN rates in primary tumours aiding to better understand the correlation between CIN levels and clinical prognosis [46], which ultimately might improve therapy stratification.

## 3. Mechanisms underlying aneuploidy tolerance

As discussed above, aneuploidy and CIN decrease the cellular fitness of untransformed cells but are also associated with



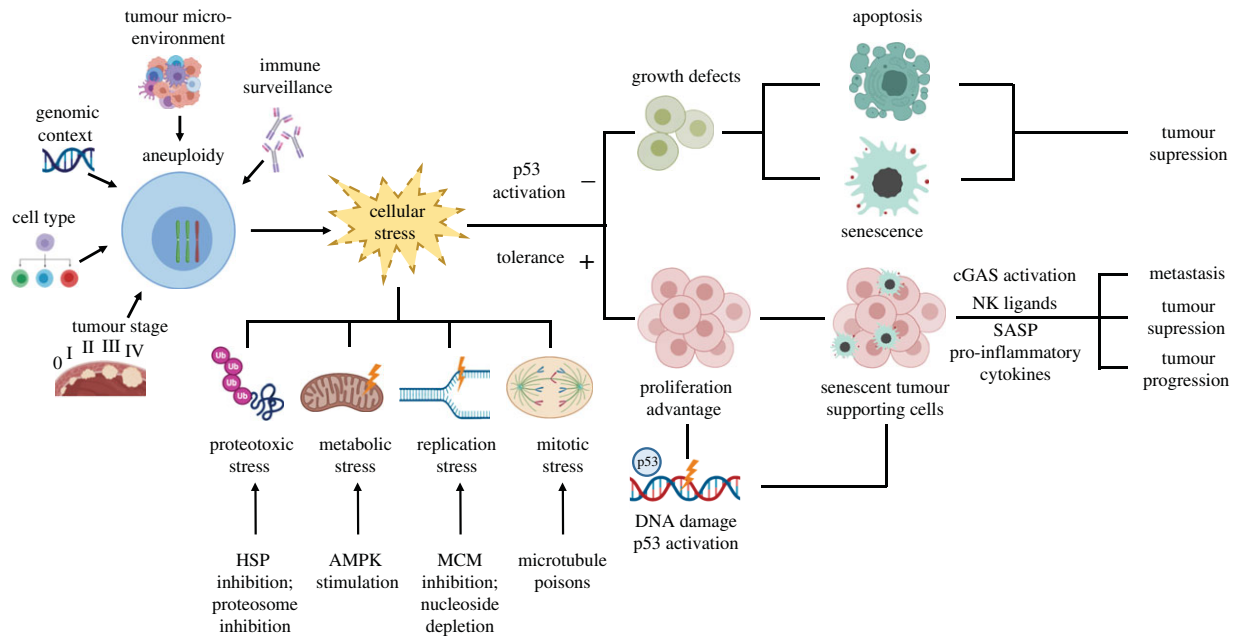
**Figure 1.** Mechanisms of CIN-imposed cell death. CIN and aneuploidy can trigger apoptosis and therefore, blocking apoptosis serves as an important aneuploidy-tolerating mechanism. Aneuploid cancer cells alter various pathways to overcome CIN-imposed apoptosis, summarized here. Aneuploidy can cause DNA damage, activating DNA damage-induced ATM kinase, following p53-dependent cell cycle arrest and apoptosis. Alternatively, histone H3.3 Ser31 phosphorylation can activate p53 to provoke apoptosis and suppress the proliferation of aneuploid cells. Aneuploidy can also lead to the activation of Caspase-2 when BCL9L is present, which causes cleavage of MDM2 and BID, subsequently leading to p53-dependent and -independent apoptosis. Additionally, aneuploidy can activate p38, resulting in p53-dependent apoptosis, while p38 deficiency upregulates Hif-1 $\alpha$  to suppress apoptosis. Finally, aneuploidy-induced ROS can induce proliferation or apoptosis through JNK signalling.

increased proliferative potential of cancer cells. This suggests that cancer cells can adjust to the aneuploid state through specific survival mechanisms, typically referred to as aneuploidy tolerance mechanisms. The existence of such mechanisms is further supported by *in vivo* studies. For instance, the loss of Mad2 is tolerated by epidermal cells in mouse skin, but hair follicle stem cells are eliminated as a result of apoptotic cell death, which suggests that epidermal basal cells have an aneuploidy-tolerating mechanism in place, while hair follicle stem cells do not [47]. Furthermore, aneuploid cells have been found within a variety of somatic cell types while aneuploidy appears to be less common in stem cells, further suggesting that stem cells have dedicated mechanisms such as special checkpoints to circumvent the propagation of aneuploid cells [48].

One of the most-studied candidate genes to support aneuploidy tolerance is p53 (figure 1). Many studies have found that the p53 pathway favours cells with a diploid karyotype by triggering apoptosis or cell cycle arrest in aneuploid cells [49,50]. Indeed, p53 mutations are frequently observed in highly aneuploid cancers including endometrial, colorectal and gastric cancers. Furthermore, p53-mutant tumours display more complex and unstable karyotypes than p53 wild-type tumours [51,52]. The aneuploidy-suppressive role of p53 is also supported in mouse models for aneuploid cancer. For instance, while CIN alone was found to be a poor instigator of cancer, concomitant p53 inactivation resulted in aggressive and highly aneuploid cancers [53–55]. Likewise, human colon organoids exhibiting a CIN phenotype and harbouring a p53 mutation form more metastases than those without a CIN phenotype [56]. Furthermore, mutations in p53 appear to precede the accumulation of aneuploid cells in Barrett's oesophagus [57]. Finally, p53 has been found to suppress the propagation of structural aneuploidies following chromosome segregation errors [58].

However, what exactly activates p53 following an aneuploidy insult remains controversial. Possible triggers include the DNA damage response, reactive oxygen species and histone H3.3 Ser31 phosphorylation following chromosome missegregation [59–61]. In addition, the stress kinase p38 has recently been found to be required for p53-mediated cell cycle arrest following cytoskeleton disruption [49,62]. Finally, p53 activation could also be a direct consequence of the aneuploid state itself, although it remains elusive how p53 would sense this independently of the aneuploidy-imposed stresses that feed into the p53 signalling pathway.

Overcoming aneuploidy-induced apoptosis is therefore considered an important aneuploidy-tolerating mechanism (figure 1) [50]. For instance, the inhibition of JNK signalling provokes apoptosis of cells displaying a CIN phenotype, presumably due to an impaired DNA damage response [63]. Conversely, in *Drosophila*, JNK activation will trigger apoptosis in cells exhibiting CIN [64]. While in some cases aneuploidy-induced apoptosis is p53 dependent [65], and thus relates to the link between p53 and aneuploidy, in other cases resistance towards apoptosis is acquired through p53-independent mechanisms. For instance, in colorectal cancer, BCL9L dysfunction helps cells cope with aneuploidy by reducing the expression of Caspase-2, thus preventing cleavage of the p53 inhibitor MDM2 and the pro-apoptotic protein BID, effectively blocking the mitochondrial apoptosis pathway [66]. In line with this, Caspase-2<sup>null</sup> mice are more prone to develop genome unstable lymphoma [67]. Similarly, the oncogenic transcription factor c-Myc can trigger p53-independent apoptosis to remove cells that underwent abnormal mitosis [68]. Finally, yet another, recently uncovered aneuploidy-tolerating mechanism involves MAPK signalling and the p38 stress response kinase. Reduction of p38 activity was shown to upregulate hypoxia-inducible factor HIF-1 $\alpha$ , which in turn promotes cell survival following chromosome missegregation by enhancing glycolysis independently of



**Figure 2.** Pathways involved in the consequences of aneuploidy. The role of aneuploidy in tumorigenesis depends on tumour stage, cell type, genomic context, tumour microenvironment and immune response. Aneuploidy promoting detrimental cellular stresses, such as proteotoxic stress (HSP inhibition, proteasome inhibition), metabolic stress (AMPK stimulation), replication stress (MCM inhibition, nucleoside depletion) and mitotic stress (microtubule poisons) can activate apoptosis and senescence, suppressing tumour development. On the other hand, cancer cells can develop tolerance mechanisms to permit the propagation of aneuploid cells. Some proliferating aneuploid cells may stimulate the DNA damage response leading to senescence and cGAS activation. The resulting senescent cells can produce SASPs and the activated cGAS pathway increases pro-inflammatory cytokines to elicit NK cell recognition to suppress tumorigenesis or to promote tumorigenesis or metastasis.

p53 [27]. Altogether these observations suggest that identifying and targeting the aneuploidy-tolerating pathways can be exploited to reduce the fitness of aneuploid cells in tumour development.

## 4. Potential aneuploidy-targeting therapeutic strategies

Aneuploidy confers a growth disadvantage to untransformed cells but still is a hallmark of cancer cells. This suggests that cancer cells have adopted mechanisms to cope with the detrimental consequences of aneuploidy, including different responses to cellular stresses, immune system activation and cell cycle arrest as discussed above. As aneuploidy is a hallmark of cancer cells that discriminates healthy cells from cancer cells, such mechanisms make promising targets for cancer therapy, which will be discussed in the context of the consequences of aneuploidy. Figure 2 shows an overview of these stresses and some of the possible interventions.

### 4.1. Enhancing the level of chromosomal instability

Although cells can adapt to aneuploidy through various mechanisms, excessive CIN beyond a critical point will lead to the death of cancer cells. Thus, enhancing the level of CIN has been proposed as a strategy to target aneuploid cancer cells (table 1). Cells with mild levels of CIN were found to be more sensitive to low doses of taxol, which enhanced the number and severity of chromosome segregation errors [69]. Similarly, when CIN rates were increased in glioblastoma-derived tumour initiation cells (TICs) that displayed low intrinsic CIN rates, proliferation was decreased

and tumour formation was abolished in an orthotopic mouse model [70]. However, while cancer patients are commonly treated with compounds that increase CIN rates in cultured cells (e.g. vincristine, paclitaxel), the molecular mechanisms driving tumour regression in patients treated with such compounds remain under debate [71]. Several targeted compounds that target mitotic regulators such as *MPS1*, *PLK4* and *AURKA* to exacerbate CIN phenotypes are currently in clinical trials, mostly in phase I [72], some of them with promising first results [73,74]. Other, not yet clinically applied examples include inhibitors of the SAC proteins *Mad2* or *BubR1*, which provoke apoptotic cell death in colorectal cancer cells [75] and the compound INH1, which targets the Hec1/Nek2-related mitotic pathway thus provoking mitotic abnormalities and cell death [76,77]. Likewise, combinations of SAC inhibitors and CIN inducers can synergistically reduce tumour growth. For example, a dysfunctional SAC combined with the microtubule destabilizing drug SKI606 (a Src inhibitor) was found to selectively kill cells with a CIN phenotype [79]. Similarly, the combination of paclitaxel and *MPS1* inhibitors was reported to reduce the growth of xenografts *in vivo* much more than either inhibitor alone [78]. Another *in vivo* study showed that combining a p38 $\alpha$  inhibitor with taxane-based chemotherapy increased the efficiency of clearing breast cancer cells compared to taxanes alone by boosting chromosome instability [80].

While these observations clearly show that enhancing CIN could be a powerful method to eradicate CIN tumours, the feasibility of such therapies depends on many factors including CIN status and CIN tolerance, many of which need further study before we can be certain that enhancing CIN is a fully safe approach to target CIN cancers.

**Table 1.** Evidence for potential aneuploidy-associated actionable vulnerabilities.

species	cell type	aneuploidization method	karyotype	<i>in vitro</i>	<i>in vivo</i>	targets	reference
enhancing CIN							
human	U2OS, HCT116, LS174-T, HeLa	Mps1 or BubR1 shRNA	random aneuploidy	+	-	low doses of taxol	[69]
human	HeLa	Tao1 shRNA	random aneuploidy	+	-	TAO1 ↓	[125]
human	HeLa	Bub1 shRNA	random aneuploidy	+	-	Bub1 ↓	[126]
human/mouse	patient derived xenografts/ MMTV-PyMT tumour model	aneuploid breast cancer cells from patients/Cre-mediated p38 $\alpha$ deletion in mouse	random aneuploidy	-	+	p38 $\alpha$ ↓ + taxanes (docetaxel and paclitaxel)	[80]
human	HeLa, T98G, SW480, DLD-1	Mad2 or BubR1 siRNA	random aneuploidy	+	-	BubR1 ↓ or Mad2 ↓	[75]
human	MDA-MB-468, SKBR3, T47D, MDA-MB-361, ZR-75-1, MDA-MB-435, HS578T, HBL100, MCF10a	Hec1/NeK1 inhibitor NIH1	random aneuploidy	+	+	Hec1/NeK2 ↓	[76]
human	HCT-116, HeLa	Mps1 inhibition	random aneuploidy	+	+	MPS1 ↓ + low dose of paclitaxel	[78]
human	RPE1, MCF7, HT29, SW620	Mad2 shRNA, MPS1 inhibitor reversine/micronuclei mediated chromosome transfer (MMCT)	random aneuploidy/ trisomy 5 and 12	+	-	Src ↓ + CIN induction	[79]
human	Caki-1, U87M	CENP-E siRNA	random aneuploidy	+	+	CENP-E ↓	[65]

(Continued.)

Table 1. (Continued.)

targeting cellular stress	species	cell type	aneuploidization method	karyotype	in vitro	in vivo	targets	reference
proteotoxic stress	human	RPE1	Mad2 shRNA or reversine	random aneuploidy	+	+	UBP3 ↓ or USP10 ↓	[127]
	budding yeast		[kar1 × wt] mediated chromosome transfer	disomic strains from [14]	–	+	UBP6	[88]
metabolic stress	human	HCT-116, RPE1	MMCT	trisomies and tetrasomies	+	–	HSP90 ↓ or HSF1 ↓	[124]
	<i>Drosophila</i>		Mad2 or Rad21 RNAi	random aneuploidy	–	+	Tor ↓	[128]
	Budding yeast		[kar1 × wt] mediated chromosome transfer	disomic strains from [14]	–	+	dual inhibition of serine and sphingolipid synthesis	[129]
	budding yeast Δ8 strain		acquired aneuploidy	chromosome XI gain	–	+	CCP1 <sup>–</sup> , UTH1	[95]
budding yeast			[kar1 × wt] mediated chromosome transfer	disomic strains	–	+	Hxt6/Hxt7	[14]
	<i>Drosophila</i>		Mad2 RNAi	random aneuploidy	–	+	PASK ↓	[130], [131]
<i>Drosophila</i>			Mad2 RNAi	random aneuploidy	–	+	PEPCK, G6PD, Cat, Sod1, Idh, Wwox	[131]
	<i>Drosophila</i>		Mad2 RNAi	random aneuploidy	–	+	JNK signalling ↓	[63]
mouse		MEFs	SIRT3 ko + Myc and/or Ras overexpression	acquired aneuploidy	+	+	SIRT3	[132]
	human/mouse	293T, HepG2/MEFs	SIRT4 ko	acquired aneuploidy	+	+	SIRT4	[133]
human/mouse		DS patient fibroblasts/ DP16 (DS mouse model) MEFs	Down syndrome (DS)	extra copy of human Chr 21 or mouse Chr16	+	+	Nrf2 stabilization	[134]
	mouse	MEFs, T-cell lymphomas	Cre-mediated Mps1 truncation	random aneuploidy	+	+	MPS1↓, p53↓	[54]
replication stress	human	HCT-116, RKO, HT29, HT55, SW620, SW1116, NCIH747, SKCO1, SW620, T84	CIN <sup>+</sup> versus CIN <sup>–</sup> cells	random aneuploidy	+	–	PIGN, MEX3C, ZNF516, Nucleosides ↑	[99]
	human	HCT-116, RPE1	MMCT	tri- and tetrasomies	+	–	MCM2-7	[31]
human		RPE1	Mps1 siRNA	random aneuploidy	+	–	MPS1	[102]
	human	pluripotent stem cells	acquired aneuploidy during passaging	chromosome 12 or 17 gain	+	–	SRF↑	[135]
mitotic stress	human	DLD1/amniocytic fibroblasts	MMCT/patient cells	trisomy 7 or 13	+	–	SPG20	[30], [20]
	human	RPE1	Mps1 siRNA	random aneuploidy	+	–	MPS1	[102]

(Continued.)

**Table 1.** (Continued.)

	species	cell type	aneuploidization method	karyotype	<i>in vitro</i>	<i>in vivo</i>	targets	reference
immune system reactivation	human/mouse	U2OS/MEFs	X-ray irradiation	random aneuploidy	+	–	cGAS-STING pathway	[106]
	human/mouse	MCF10A, UWB1.289/B16-F10	X-ray irradiation, genotoxic agents	random aneuploidy	+	+	Genotoxic agents + immune checkpoint blockade	[136]
	human/mouse	MDA-MB-231, H2030/4T1	dmMCAK overexpression	random aneuploidy	+	+	NF-κB pathway	[103]
	human/mouse	Tumour and matched peritumoral specimen from gastric cancer patients, BGC-823, SGC-7901/chronic <i>H. pylori</i> infection mouse model	n.a.	n.a.	+	+	STING ↑	[111]
senescence induction	human	RPE1, HCT116, U2OS	Nocodazole, reversine, Bub1 or Smc1a shRNA	random aneuploidy	+	+	MPS1, BUB1 and SMC1A	[114]
	human	MKN45, ST2957	Mad2 or BubR1 shRNA	random aneuploidy	+	–	Mad2 ↓ or BubR1 ↓ + PTX	[122]
	human	IMR90, MCF10A	Mad2 siRNA	random aneuploidy	+	–	Mad2	[116]



## 4.2. Targeting the cellular stresses imposed by aneuploidy

Instead of targeting the process of chromosome missegregation itself, specific vulnerabilities caused by aneuploidy-associated cellular stresses such as proteotoxic, metabolic, replication and mitotic stress can potentially be exploited in therapy as well, such as by directly reverting this adaptation or by enhancing these stresses beyond tolerable levels (table 1), which we will discuss further below [65,81,82].

Aneuploid cells display proteotoxic stress, which includes increased protein degradation [83] and aggregation [84], as well as impaired protein folding [85]. This aneuploidy-imposed stress is caused by changes in protein levels that are produced by genes on the aneuploid chromosomes [86] and which lead to imbalances in the protein complex stoichiometry [41,87]. Indeed, reducing proteotoxic stress improves the survival of aneuploid cells. For instance, the loss of the deubiquitinating enzyme (DUB) UBP6 improves survival of aneuploid yeast strains by increasing proteasome-mediated protein degradation and thus reducing proteotoxic stress [88]. This poses a targetable vulnerability, as some aneuploid yeast strains show increased sensitivity to the proteasome inhibitor MG132 and the loss of the deubiquitinase Ubp3, a DUB that is required for full proteasome function [11,76].

In addition to the increased protein burden itself, induced aneuploidy also impairs HSP90-mediated protein folding, further increasing proteotoxic stress. Increasing protein levels of heat shock factor 1 (HSF1) counteract this effect, revealing HSF1 overexpression as an aneuploidy-tolerating hit in human cells [85]. These observations can possibly be exploited in therapy, such as by treating aneuploid cancers with an HSP90 protein folding inhibitor (17-AAG, 17-allyl-amino-17-demethoxy-geldanamycin) or drugs inhibiting HSF1 activation [83], thus effectively boosting proteotoxic stress in aneuploid cells beyond tolerable levels [89]. Indeed, the HSP90 inhibitor 17-AAG has significant anti-tumour activity [90], and when combined with the energy stress-inducing compound AICAR, 17-AAG is particularly toxic to aneuploid cells [91]. Thus, while eliminating proteotoxic stress is beneficial for aneuploid cells, (pharmaceutical) exacerbation of proteotoxicity might be a promising new avenue for cancer therapy.

Autophagy, a process involved in the removal of damaged or surplus proteins and organelles is upregulated in aneuploid cells. For instance, human colon cancer cells carrying an extra chromosome display increased LC-3 foci, a marker for autophagy, compared to control cells [41]. In concordance, aneuploid cells are more sensitive to autophagy inhibitors [92] such as chloroquine, a compound that inhibits late stages of autophagy. Chloroquine was shown to preferentially inhibit proliferation of trisomic MEFs compared to euploid MEFs [93]. Similarly, trisomic MEFs showed impaired proliferation when another autophagy factor, Beclin 1, was knocked down [91]. Furthermore, aneuploid cells show increased expression of the cytosolic receptor SQSTM1, a protein that targets ubiquitinated proteins to the autophagy machinery further exemplifying how aneuploid cells depend on autophagy [94]. Altogether, these findings indicate that interfering with autophagy could be another promising route towards selective aneuploidy-targeting therapy [83].

In addition to proteotoxic stress, aneuploid cells also suffer from metabolic stress *in vitro* as well as *in vivo* [14,15,41,54,91], which provides another targetable vulnerability. For instance, as mentioned above, trisomic MEFs are much more sensitive to the energy stress-inducing compound AICAR than their euploid counterparts [92]. Furthermore, increased proliferation of aneuploid cells coincides with an increase in the levels of sphingolipids, and conversely, dual inhibition of serine and sphingolipid synthesis is lethal to aneuploid yeast cells [95]. The upregulated metabolism observed in aneuploid cells frequently coincides with increased levels of reactive oxygen species (ROS), which can activate the DNA damage response [96]. In non-transformed cells, this can be toxic, as shown in *Drosophila*, in which aneuploidy-induced ROS triggers JNK activation and subsequent apoptosis [97]. Together, these findings suggest that exacerbating the metabolic phenotype of aneuploid cells could be yet another way to selectively kill aneuploid cancer cells.

Aneuploidy has also been associated with the downregulation of replication factors, in particular the subunits of the replicative helicase MCM2-7 [31,98]. The resulting replication stress can lead to extra-chromosomal instability, such as an increase in the frequency of anaphase bridges as observed in aneuploid HCT116 and RPE1 cells. Restoring the expression of MCM2-7 back to wild-type levels partially rescues this phenotype [31]. Similarly, colorectal cancer cells exhibiting a CIN phenotype also suffer from high levels of replication stress, which leads to further DNA damage [99]. Supplementing these cells with nucleosides reduces both DNA damage and segregation errors [99]. Together, these observations indicate that replication stress as a result of aneuploidy will further increase the CIN phenotype and thus tumour heterogeneity. While inhibiting aneuploidy-imposed replication stress might have limited effects on established cancer cells, enhancing replication stress could push aneuploid cells over the edge, which could be another means to selectively kill CIN cells [99,100].

Lastly, the gains and losses of chromosomes will also affect the expression of mitotic proteins including the machinery of the SAC and chromosomal segregation. The resulting mitotic stress might be a reason that stable aneuploidy leads to CIN and thereby the generation of new karyotypes. For instance, lymphocytes from individuals born with systemic and stable trisomies for either chromosome 13, 18 and 21 show an increased frequency of aneuploidies for three other autosomes (chromosomes 8, 15 and 16) compared to lymphocytes of healthy controls suggesting that stable aneuploid cells tend to destabilize their genomes [101]. Similarly, DLD1 colorectal cancer cells carrying an extra chromosome 7 or 13 display reduced mitotic fidelity compared to diploid DLD1 cells [30], further suggesting that aneuploidy can induce chromosome missegregation.

Taken together, these findings indicate that aneuploidy-imposed protein imbalances lead to (i) proteotoxicity (protein misfolding, protein aggregation and proteasomal degradation), (ii) increased autophagy, (iii) an increased cellular metabolism, (iv) increased replication stress and (v) a deregulated mitotic machinery, which all offer promising therapeutic targets. However, further research into the effects of deregulating these pathways in aneuploid cells is still needed, particularly as exacerbating the toxic effects of CIN might also lead to malignant transformation of

non-aneuploid cells. Vice versa, aneuploidy-targeting therapies could also lead to the selection of near-euploid cancer cells or aneuploid cancer cells that no longer rely on the targeted pathway to cope with CIN, both of which would lead to cancer recurrence. However, further work, including extensive single-cell DNA and RNA sequencing, is required to better understand which evolutionary paths CIN tumours exploit to become therapy resistant.

### 4.3. Activating the immune system to target aneuploidy

In addition to targeting cell-intrinsic consequences of aneuploidy, the tumour microenvironment can potentially also be exploited to clear aneuploid cancer cells. More specifically, (re)activation of the immune system can become a new therapeutic strategy to treat aneuploid tumours since aneuploid cells might be recognized by the innate immune system (table 1) [102]. Aneuploid cells with complex karyotypes trigger an upregulation of pro-inflammatory factors [32,102] and are cleared by natural killer cells in a co-culture setting [102]. In order to survive and transform into an aneuploid cancer cell, aneuploid cells need to circumvent this clearance mechanism, but how aneuploid cancer manage to do this *in vivo* is not yet clear. One candidate mechanism to be involved is cGAS-STING signalling. Missegregated chromosomes often localize into micronuclei which, when ruptured, release genomic DNA into the cytosol. This leads to the activation of cyclic GMP-AMP synthase (cGAS), a major cytosolic nucleic acid sensor with dsDNA as its ligand [103–106]. cGAS activation generates cyclic dinucleotide cyclic GMP-AMP (cGAMP), which in turn activates a Type I Interferon response and initiates NF- $\kappa$ B signalling via the adaptor Stimulator of Interferon Genes (STING) [107,108]. This axis thus acts tumour suppressive and, indeed, several cancers display decreased cGAS-STING signalling, including colorectal carcinoma and melanoma [109,110], which has been associated with poor survival [111]. Cancer cells may thus have found a way to circumvent activation of the immune system upon micronuclei rupture. On the other hand, cGAS was also found to inhibit homologous recombination-mediated DNA repair, thereby decreasing the efficiency of DNA repair and thus promoting tumorigenesis [112]. Furthermore, active cGAS-STING signalling promotes metastasis of human triple-negative breast cancer cells in athymic mice [103]. The cGAS-STING pathway thus seems to have a tumour suppressive as well as a tumour-promoting role. Further work is required to resolve this apparent paradox and should determine in which setting cGAS-STING inhibition or activation is the best strategy to kill aneuploid cancer cells [113].

### 4.4. Targeting aneuploidy by induction of senescence

Senescence is a state of irreversible growth arrest without cell death. Senescence can be induced by unrepaired DNA damage or other cellular stresses that yield a robust p53 response [114]. As many cancer therapies provoke DNA damage, therapy-induced senescence has been proposed as a promising strategy to treat cancer (table 1), particularly when combined with senolytic drugs (i.e. drugs that next selectively eliminate the therapy-induced senescent cells [115]).

Numerous studies over the past decades have found that cellular senescence is a frequent event in CIN cell populations. For instance, deletion of the SAC genes *BUB1* and *MAD2* can trigger a senescence phenotype [116,117]. Similarly inactivation of *SMC1A*, a component of the Cohesin complex, leads to aneuploidy and senescence [118]. Aneuploid cell populations secrete cytokines that have been associated with the senescence-associated secretory phenotype (SASP) [119] and can trigger an immune response [102]. Therefore, exacerbating aneuploidy in cells with a CIN phenotype in combination with senolytics could become a new strategy to eradicate aneuploid cancer cells *in vivo*.

Senescence is generally considered as a barrier to malignant transformation; however, the cytokines secreted by senescent cells have two opposing roles in the tumorigenesis. On the one hand, they will trigger cytokine release of the surrounding cancer cells and immune-mediated clearance thus suppressing tumour development [102]. On the other hand, the secreted cytokines can also accelerate age-associated phenotypes and metastasis [120,121]. Both scenarios appear to occur in human cancer. For instance, a recent study showed that provoking complex karyotypes (i.e. more than five chromosomes gained or lost per cell) in several cell lines resulted in senescence and SASP, which led to the increased invasion, migration of the cancer cells *in vitro* and *in vivo* and angiogenesis *in vivo* [114]. Conversely, another study found that when a senescent state was induced in gastric cancer cell lines by silencing *Mad2* and *BubR1*, this led to decreased cell proliferation, migration and invasion and this phenotype was aggravated when the CIN rates were further increased by concomitant treatment with the microtubule poison paclitaxel [122]. In line with the latter, the elimination of chemotherapy-induced senescent cells was found to reduce the risk of cancer recurrence and furthermore associated with reduced chemotherapy-associated bone marrow suppression and cardiac dysfunction [123]. Taken together, it is still not fully understood when senescent cancer cells should be eliminated and when not. This probably relies on the specific context of the SASP or cancer type.

## 5. Concluding remarks

In this review, we discussed the paradoxical role of the consequences of aneuploidy as tumour-promoting or tumour-suppressing features. Although in most cases aneuploidy is detrimental for cells, it confers a fitness advantage under some circumstances. This probably depends on the (epi-)genetic context such as the cell type in which the aneuploidy occurs, but also on the CIN rates within the cells. Thus, before targeting aneuploid cancers by increasing genomic instability, both the context as well as the pre-existing CIN rates should be carefully considered. One way to estimate *in vivo* CIN rates is by determining the level of intratumour karyotype heterogeneity, for instance by single-cell whole-genome sequencing [45]. When considering increasing CIN rates as a therapeutic approach, it is furthermore important to consider that untransformed cells will also be affected by the CIN-provoking agents and thus will suffer from low to moderate CIN rates as well, thereby predisposing these cells to become tumorigenic and lead to therapy-induced cancers later on. Therefore, future work should look into how to

more selectively target cells displaying a CIN phenotype, either by drug-mediated CIN exacerbation or by (co-)treatment with drugs that exploit other vulnerabilities of CIN cells.

Several of the aneuploidy stress responses have been discussed in this review. However, there is mounting evidence that aneuploid cancer cells have activated tolerance mechanisms to adapt to the detrimental outcome of these stress responses. For instance, the discovery that aneuploid cells have downregulated HSP90 mRNA and protein and are impaired in HSP90-mediated protein folding led to the finding that aneuploid cells are very sensitive to HSP90 inhibitors [124]. It is therefore of the utmost importance to better understand how cells adapt to and cope with an aneuploid DNA content as this will probably reveal more approaches to selectively target cells with a CIN phenotype. In addition to studying the pathways that help cells cope with an aneuploid state, we should also look further into which mutations in aneuploid cancers help aneuploid cells to convert into aneuploid cancer cells as these are also promising targets for aneuploid cancer therapy. Similarly, (re)activation of the immune system could become a new therapeutic strategy to treat aneuploid tumours since aneuploid cells might be

recognized by the innate immune system and aneuploid cancer cells might have blocked this response. Future work should reveal whether this response also takes place *in vivo* and how a failing immune response could be reinstated. Lastly, we need to further unravel the relationship between aneuploidy and senescence. Indeed, inducing senescence by DNA damage or provoking CIN has been suggested to be an effective way to treat cancer. However, the role of senescent cells in cancer is still controversial: in some contexts, it is tumour inhibiting, in others tumour promoting. Therefore, future studies should investigate whether senescent cells should be eliminated or not, which probably depends on the individual cancer type.

**Data accessibility.** This article has no additional data.

**Authors' contributions.** L.Z. and F.F. wrote the review with the help of L.J.J.

**Competing interests.** The authors do not have competing interests.

**Funding.** This work was funded by KWF Kankerbestrijding/Dutch Cancer Society grant 2015-RUG 5549 to F.F. and a Chinese Scholarship Council PhD fellowship to L.Z.

**Acknowledgements.** We are grateful to the members of the Foijer laboratory for fruitful discussion.

## References

- Weaver BA, Cleveland DW. 2006 Does aneuploidy cause cancer? *Curr. Opin. Cell Biol.* **18**, 658–667. (doi:10.1016/j.ccb.2006.10.002)
- Taylor AM *et al.* 2018 Genomic and functional approaches to understanding cancer aneuploidy. *Cancer Cell* **33**, 676–689. (doi:10.1016/j.ccell.2018.03.007)
- Bach D-H, Zhang W, Sood AK. 2019 Chromosomal instability in tumor initiation and development. *Cancer Res.* **79**, 3995–4002. (doi:10.1158/0008-5472.CAN-18-3235)
- Valind A, Jin Y, Baldetorp B, Gisselsson D. 2013 Whole chromosome gain does not in itself confer cancer-like chromosomal instability. *Proc. Natl Acad. Sci. USA* **110**, 21 119–21 123. (doi:10.1073/pnas.1311163110)
- Bharadwaj R, Yu H. 2004 The spindle checkpoint, aneuploidy, and cancer. *Oncogene* **23**, 2016–2027. (doi:10.1038/sj.onc.1207374)
- Michel LS *et al.* 2001 MAD2 haplo-insufficiency causes premature anaphase and chromosome instability in mammalian cells. *Nature* **409**, 355–359. (doi:10.1038/35053094)
- Iwanaga Y *et al.* 2007 Heterozygous deletion of mitotic arrest-deficient protein 1 (MAD1) increases the incidence of tumors in mice. *Cancer Res.* **67**, 160–166. (doi:10.1158/0008-5472.CAN-06-3326)
- Dai W *et al.* 2004 Slippage of mitotic arrest and enhanced tumor development in mice with BubR1 haploinsufficiency. *Cancer Res.* **64**, 440–445. (doi:10.1158/0008-5472.CAN-03-3119)
- Babu JR, Jeganathan KB, Baker DJ, Wu X, Kang-Decker N, van Deursen JM, Van Deursen JM. 2003 Rae1 is an essential mitotic checkpoint regulator that cooperates with Bub3 to prevent chromosome missegregation. *J. Cell Biol.* **160**, 341–353. (doi:10.1083/jcb.200211048)
- Zasadil LM, Britigan EMC, Ryan SD, Kaur C, Guckenberger DJ, Beebe DJ, Moser AR, Weaver BA. 2016 High rates of chromosome missegregation suppress tumor progression, but do not inhibit tumor initiation. *Mol. Biol. Cell* **27**, 1981–1989. (doi:10.1091/mbc.E15-10-0747)
- Li M, Li A, Zhou S, Lv H, Yang W. 2019 SPAG5 upregulation contributes to enhanced c-MYC transcriptional activity via interaction with c-MYC binding protein in triple-negative breast cancer. *J. Hematol. Oncol.* **12**, 1–18. (doi:10.1186/s13045-019-0700-2)
- Shi L, Qalieh A, Lam MM, Keil JM, Kwan KY. 2019 Robust elimination of genome-damaged cells safeguards against brain somatic aneuploidy following Knl1 deletion. *Nat. Commun.* **10**, 1–14. (doi:10.1038/s41467-019-10411-w)
- Weaver BAA, Silk AD, Montagna C, Verdier-Pinard P, Cleveland DW. 2007 Article aneuploidy acts both oncogenically and as a tumor suppressor. *Cancer Cell* **11**, 25–36. (doi:10.1016/j.ccr.2006.12.003)
- Torres EM, Sokolsky T, Tucker CM, Chan LY, Boselli M, Dunham MJ, Amon A. 2007 Effects of aneuploidy on cellular physiology and cell division in haploid yeast. *Science* **317**, 916–924. (doi:10.1126/science.1142210)
- Williams BR, Prabhu VR, Hunter KE, Glazier CM, Whittaker CA, Housman DE, Amon A. 2008 Aneuploidy affects proliferation and spontaneous immortalization in mammalian cells. *Science* **322**, 703–709. (doi:10.1126/science.1160058)
- Sheltzer JM, Ko JH, Replogle JM, Passerini V, Storchova Z, Amon A. 2017 Single-chromosome gains commonly function as tumor suppressors. *Cancer Cell* **31**, 240–255. (doi:10.1016/j.ccell.2016.12.004)
- Bakhomou SF, Cantley LC. 2018 The multifaceted role of chromosomal instability in cancer and its microenvironment. *Cell* **174**, 1347–1360. (doi:10.1016/j.cell.2018.08.027)
- Davoli T, Uno H, Wooten EC, Elledge SJ. 2017 Tumor aneuploidy correlates with markers of immune evasion and with reduced response to immunotherapy. *Science* **355**, eaaf8399. (doi:10.1126/science.aaf8399)
- Laughney AM, Elizalde S, Genovese G, Bakhomou SF. 2015 Dynamics of tumor heterogeneity derived from clonal karyotypic evolution. *Cell Rep.* **12**, 809–820. (doi:10.1016/j.celrep.2015.06.065)
- Rutledge SD *et al.* 2016 Selective advantage of trisomic human cells cultured in non-standard conditions. *Sci. Rep.* **6**, 1–12. (doi:10.1038/srep22828)
- Bakhomou SF, Danilova OV, Kaur P, Levy NB, Compton DA. 2011 Chromosomal instability substantiates poor prognosis in patients with diffuse large B-cell lymphoma. *Clin. Cancer Res.* **17**, 7704–7711. (doi:10.1158/1078-0432.CCR-11-2049)
- Turajlic S, Swanton C. 2016 Metastasis as an evolutionary process. *Science* **352**, 169–175. (doi:10.1126/science.aaf2784)
- Roylance R *et al.* 2011 Relationship of extreme chromosomal instability with long-term survival in a retrospective analysis of primary breast cancer. *Cancer Epidemiol. Biomarkers Prev.* **20**, 2183–2194. (doi:10.1158/1055-9965.EPI-11-0343)

24. Suijkerbuijk SJE, Van Osch MHJ, Bos FL, Hanks S, Rahman N, Kops GJPL. 2010 Molecular causes for BUBR1 dysfunction in the human cancer predisposition syndrome mosaic variegated aneuploidy. *Cancer Res.* **70**, 4891–4900. (doi:10.1158/0008-5472.CAN-09-4319)
25. Sheltzer JM, Amon A. 2011 The aneuploidy paradox: costs and benefits of an incorrect karyotype. *Trends Genet.* **27**, 446–453. (doi:10.1016/j.tig.2011.07.003)
26. Zhang M, Cheng L, Jia Y, Liu G, Li C, Song S, Bradley A, Huang Y. 2016 Aneuploid embryonic stem cells exhibit impaired differentiation and increased neoplastic potential. *EMBO J.* **35**, 2285–2300. (doi:10.15252/embj.201593103)
27. Thomas R, Marks DH, Chin Y, Benezra R. 2018 Whole chromosome loss and associated breakage–fusion–bridge cycles transform mouse tetraploid cells. *EMBO J.* **37**, 201–218. (doi:10.15252/embj.201797630)
28. Goh JY *et al.* 2017 Chromosome 1q21.3 amplification is a trackable biomarker and actionable target for breast cancer recurrence. *Nat. Med.* **23**, 1319–1330. (doi:10.1038/nm.4405)
29. Ben-david U *et al.* 2014 Aneuploidy induces profound changes in gene expression, proliferation and tumorigenicity of human pluripotent stem cells. *Nat. Commun.* **5**, 1–11. (doi:10.1038/ncomms5825)
30. Nicholson JM *et al.* 2015 Chromosome mis-segregation and cytokinesis failure in trisomic human cells. *Elife* **4**, e05068. (doi:10.7554/eLife.05068)
31. Passerini V, Ozeri-Galai E, de Pagter MS, Donnelly N, Schmalbrock S, Kloosterman WP, Kerem B, Storchová Z. 2016 The presence of extra chromosomes leads to genomic instability. *Nat. Commun.* **7**, 10754. (doi:10.1038/ncomms10754)
32. Viganó C *et al.* 2018 Quantitative proteomic and phosphoproteomic comparison of human colon cancer DLD-1 cells differing in ploidy and chromosome stability. *Mol. Biol. Cell.* **29**, 1003–1152. (doi:10.1091/mbc.E17-10-0577)
33. Diaz-Rodríguez E, Sotillo R, Schwartzman J-M, Benezra R. 2008 Hec1 overexpression hyperactivates the mitotic checkpoint and induces tumor formation in vivo. *Proc. Natl Acad. Sci. USA* **105**, 16 719–16 724. (doi:10.1073/pnas.0803504105)
34. Hanks S *et al.* 2004 Constitutional aneuploidy and cancer predisposition caused by biallelic mutations in BUB1B. *Nat. Genet.* **36**, 1159–1161. (doi:10.1038/ng1449)
35. García-Castillo H, Vásquez-Velázquez AI, Rivera H, Barros-Núñez P. 2008 Clinical and genetic heterogeneity in patients with mosaic variegated aneuploidy: delineation of clinical subtypes. *Am. J. Med. Genet. Part A* **146**, 1687–1695. (doi:10.1002/ajmg.a.32315)
36. Andor N *et al.* 2016 Pan-cancer analysis of the extent and consequences of intra-tumor heterogeneity. *Nat. Med.* **22**, 105–113. (doi:10.1038/nm.3984)
37. Lee AJX *et al.* 2011 Chromosomal instability confers intrinsic multidrug resistance. *Cancer Res.* **71**, 1858–1870. (doi:10.1158/0008-5472.CAN-10-3604)
38. Fonseca R *et al.* 2001 Deletions of chromosome 13 in multiple myeloma identified by interphase FISH usually denote large deletions of the q arm or monosomy. *Leukemia* **15**, 981–986. (doi:10.1038/sj.leu.2402125)
39. Wang W, Zhang Y, Chen R, Tian Z, Zhai Y, Janz S, Gu C, Yang Y. 2017 Chromosomal instability and acquired drug resistance in multiple myeloma. *Oncotarget* **8**, 78 234–78 244. (doi:10.18632/oncotarget.20829)
40. Caudle AS, Yang WT, Mittendorf EA, Kuerer HM. 2016 Mad2-induced chromosome instability leads to lung tumor relapse after oncogene withdrawal. *Nature* **150**, 137–143. (doi:10.1001/jamasurg.2014.1086.Feasibility)
41. Stinge S, Stoehr G, Peplowska K, Cox J, Mann M, Storchova Z. 2012 Global analysis of genome, transcriptome and proteome reveals the response to aneuploidy in human cells. *Mol. Syst. Biol.* **8**, 608. (doi:10.1038/msb.2012.40)
42. Silk AD, Zasadil LM, Holland AJ, Vitre B, Cleveland DW, Weaver BA. 2013 Chromosome missegregation rate predicts whether aneuploidy will promote or suppress tumors. *Proc. Natl Acad. Sci. USA* **110**, E4134–E4141. (doi:10.1073/pnas.1317042110)
43. Rao CV, Yang Y, Swamy MV, Liu T, Fang Y, Mahmood R, Jhanwar-uniyal M, Dai W. 2005 Colonic tumorigenesis in BubR1. *PNAS* **102**, 1–6. (doi:10.1073/iti0105102)
44. Simon J, Bakker B, Foijer F. 2015 CINcere modelling: what have mouse models for chromosome instability taught us? *Results Cancer Res.* **200**, 39–60. (doi:10.1007/978-3-319-20291-4\_2)
45. Bakker B, van den Bos H, Lansdorp PM, Foijer F. 2015 How to count chromosomes in a cell: an overview of current and novel technologies. *BioEssays* **37**, 570–577. (doi:10.1002/bies.201400218)
46. Bakker B *et al.* 2016 Single-cell sequencing reveals karyotype heterogeneity in murine and human malignancies. *Genome Biol.* **17**, 115. (doi:10.1186/s13059-016-0971-7)
47. Foijer F *et al.* 2013 Spindle checkpoint deficiency is tolerated by murine epidermal cells but not hair follicle stem cells. *Proc. Natl Acad. Sci. USA* **110**, 2928–2933. (doi:10.1073/pnas.1217388110)
48. Baker DJ *et al.* 2013 Increased expression of BubR1 protects against aneuploidy and cancer and extends healthy lifespan. *Nat. Cell Biol.* **15**, 96–102. (doi:10.1038/ncb2643)
49. Thompson SL, Compton DA. 2010 Proliferation of aneuploid human cells is limited by a p53-dependent mechanism. *J. Cell Biol.* **188**, 369–381. (doi:10.1083/jcb.200905057)
50. Simões-Sousa S *et al.* 2018 The p38 $\alpha$  stress kinase suppresses aneuploidy tolerance by inhibiting Hif-1 $\alpha$ . *Cell Rep.* **25**, 749–760. (doi:10.1016/j.celrep.2018.09.060)
51. Kandoth SN *et al.* 2013 Integrated genomic characterization of endometrial carcinoma: the cancer genome atlas research network. *Nature* **497**, 67–73. (doi:10.1002/cncr.27633.Percutaneous)
52. Tang R, Changchien CR, Wu MC, Fan CW, Liu KW, Chen JS, Chien HT, Hsieh LL. 2004 Colorectal cancer without high microsatellite instability and chromosomal instability: an alternative genetic pathway to human colorectal cancer. *Carcinogenesis* **25**, 841–846. (doi:10.1093/carcin/bgh074)
53. Baker DJ, Jin F, Jeganathan KB, van Deursen JM. 2009 Whole chromosome instability caused by Bub1 insufficiency drives tumorigenesis through tumor suppressor gene loss of heterozygosity. *Cancer Cell* **16**, 475–486. (doi:10.1016/j.ccr.2009.10.023)
54. Foijer F *et al.* 2014 Chromosome instability induced by Mps1 and p53 mutation generates aggressive lymphomas exhibiting aneuploidy-induced stress. *Proc. Natl Acad. Sci. USA* **111**, 13 427–13 432. (doi:10.1073/pnas.1400892111)
55. Foijer F *et al.* 2017 Deletion of the MAD2L1 spindle assembly checkpoint gene is tolerated in mouse models of acute T-cell lymphoma and hepatocellular carcinoma. *Elife* **6**, e20873. (doi:10.7554/eLife.20873)
56. Matano M, Date S, Shimokawa M, Takano A, Fujii M, Ohta Y, Watanabe T, Kanai T, Sato T. 2015 Modeling colorectal cancer using CRISPR-Cas9-mediated engineering of human intestinal organoids. *Nat. Med.* **21**, 256–262. (doi:10.1038/nm.3802)
57. Blount PL *et al.* 1994 17p allelic losses in diploid cells of patients with Barrett's esophagus who develop aneuploidy. *Cancer Res.* **54**, 2292–2295.
58. Soto M, Raaijmakers JA, Bakker B, Spierings DCJ, Lansdorp PM, Foijer F, Medema RH. 2017 p53 Prohibits propagation of chromosome segregation errors that produce structural aneuploidies. *Cell Rep.* **19**, 2423–2431. (doi:10.1016/j.celrep.2017.05.055)
59. Ju S-M, Pae H-O, Kim W-S, Kang D-G, Lee H-S, Jeon B-H. 2014 Role of reactive oxygen species in p53 activation during cisplatin-induced apoptosis of rat mesangial cells. *Eur. Rev. Med. Pharmacol. Sci.* **18**, 1135–1141.
60. Lakin ND, Jackson SP. 1999 Regulation of p53 in response to DNA damage. *Oncogene* **18**, 7644–7655. (doi:10.1038/sj.onc.1203015)
61. Hinchcliffe EH, Day CA, Karanjeet KB, Fadness S, Langfald A, Vaughan KT, Dong Z. 2016 Chromosome missegregation during anaphase triggers p53 cell cycle arrest through histone H3.3 Ser31 phosphorylation. *Nat. Cell Biol.* **18**, 668–675. (doi:10.1038/ncb3348)
62. Uetake Y, Loncarek J, Nordberg JJ, English CN, La Terra S, Khodjakov A, Sluder G. 2007 Cell cycle progression and de novo centriole assembly after centrosomal removal in untransformed human cells. *J. Cell Biol.* **176**, 173–182. (doi:10.1083/jcb.200607073)
63. Wong HW-S, Shaikat Z, Wang J, Saint R, Gregory SL. 2014 JNK signaling is needed to tolerate chromosomal instability. *Cell Cycle* **13**, 622–631. (doi:10.4161/cc.27484)
64. Dekanty A, Barrio L, Muzzopappa M, Auer H, Milán M. 2012 Aneuploidy-induced delaminating cells

- drive tumorigenesis in *Drosophila* epithelia. *Proc. Natl Acad. Sci. USA* **109**, 20 549–20 554. (doi:10.1073/pnas.1206675109)
65. Ohashi A *et al.* 2015 Aneuploidy generates proteotoxic stress and DNA damage concurrently with p53-mediated post-mitotic apoptosis in SAC-impaired cells. *Nat. Commun.* **6**, 1–16. (doi:10.1038/ncomms8668)
66. López-García C *et al.* 2017 BCL9 L dysfunction impairs caspase-2 expression permitting aneuploidy tolerance in colorectal cancer. *Cancer Cell* **31**, 79–93. (doi:10.1016/j.ccell.2016.11.001)
67. Puccini J, Shalini S, Voss AK, Gatei M, Wilson CH, Hiwase DK, Lavin MF, Dorstyn L, Kumar S. 2013 Loss of caspase-2 augments lymphomagenesis and enhances genomic instability in Atm-deficient mice. *Proc. Natl Acad. Sci. USA* **110**, 19 920–19 925. (doi:10.1073/pnas.1311947110)
68. Topham C *et al.* 2015 MYC Is a major determinant of mitotic cell fate. *Cancer Cell* **28**, 129–140. (doi:10.1016/j.ccell.2015.06.001)
69. Janssen A, Kops GJPL, Medema RH. 2009 Elevating the frequency of chromosome mis-segregation as a strategy to kill tumor cells. *Proc. Natl Acad. Sci. USA* **106**, 19 108–19 113. (doi:10.1073/pnas.0904343106)
70. Godek KM, Venere M, Wu Q, Mills KD, Hickey WF, Rich JN, Compton DA. 2016 Chromosomal instability affects the tumorigenicity of glioblastoma tumor-initiating cells. *Cancer Discov.* **6**, 532–545. (doi:10.1158/2159-8290.CD-115-154)
71. Weaver BA. 2014 How Taxol/paclitaxel kills cancer cells. *Mol. Biol. Cell.* **25**, 2677–2681. (doi:10.1091/mbc.E14-04-0916)
72. Dominguez-Brauer C, Thu KL, Mason JM, Blaser H, Bray MR, Mak TW. 2015 Targeting mitosis in cancer: emerging strategies. *Mol. Cell* **60**, 524–536. (doi:10.1016/j.molcel.2015.11.006)
73. Veitch ZW *et al.* 2019 Safety and tolerability of CFI-400945, a first-in-class, selective PLK4 inhibitor in advanced solid tumours: a phase 1 dose-escalation trial. *Br. J. Cancer* **121**, 318–324. (doi:10.1038/s41416-019-0517-3)
74. Lorusso P *et al.* 2018 First-in-human study of the monopolar spindle 1 (Mps1) kinase inhibitor BAY 1161909 in combination with paclitaxel in subjects with advanced malignancies. *Ann. Oncol.* **29**, 133–148. (doi:10.1093/annonc/mdy279.410)
75. Kops GJPL, Foltz DR, Cleveland DW. 2004 Lethality to human cancer cells through massive chromosome loss by inhibition of the mitotic checkpoint. *Proc. Natl Acad. Sci. USA* **101**, 8699–8704. (doi:10.1073/pnas.0401142101)
76. Wu G, Qiu X-L, Zhou L, Zhu J, Chamberlin R, Lau J, Chen P-L, Lee W-H. 2008 Small molecule targeting the Hec1/Nek2 mitotic pathway suppresses tumor cell growth in culture and in animal. *Cancer Res.* **68**, 8393–8399. (doi:10.1158/0008-5472.CAN-08-1915)
77. Hu CM *et al.* 2015 Novel small molecules disrupting Hec1/Nek2 interaction ablate tumor progression by triggering Nek2 degradation through a death-trap mechanism. *Oncogene* **34**, 1220–1230. (doi:10.1038/onc.2014.67)
78. Jemaà M *et al.* 2013 Characterization of novel MPS1 inhibitors with preclinical anticancer activity. *Cell Death Differ.* **20**, 1532–1545. (doi:10.1038/cdd.2013.105)
79. Schukken KM *et al.* 2020 Altering microtubule dynamics is synergistically toxic with spindle assembly checkpoint inhibition. *Life Sci. Alliance* **3**, 1–15. (doi:10.26508/lsa.201900499)
80. Cánovas B *et al.* 2018 Targeting p38 $\alpha$  Increases DNA damage, chromosome instability, and the anti-tumoral response to taxanes in breast cancer cells. *Cancer Cell* **33**, 1094–1110. (doi:10.1016/j.ccell.2018.04.010)
81. Zhu J, Tsai H-J, Gordon MR, Li R. 2018 Cellular stress associated with aneuploidy. *Dev. Cell* **44**, 420–431. (doi:10.1016/j.devcel.2018.02.002)
82. Donnelly N, Storchová Z. 2015 Aneuploidy and proteotoxic stress in cancer. *Mol. Cell. Oncol.* **2**, 7–9. (doi:10.4161/23723556.2014.976491)
83. Manchado E, Malumbres M. 2011 Targeting aneuploidy for cancer therapy. *Cell.* **144**, 465–466. (doi:10.1016/j.cell.2011.01.037)
84. Oromendia AB, Dodgson SE, Amon A. 2012 Aneuploidy causes proteotoxic stress in yeast. *Genes Dev.* **26**, 2696–2708. (doi:10.1101/gad.207407.112)
85. Donnelly N, Passerini V, Dürbaum M, Stingle S, Storchová Z. 2014 HSF1 deficiency and impaired HSP 90-dependent protein folding are hallmarks of aneuploid human cells. *EMBO J.* **33**, 2374–2387. (doi:10.15252/embj.201488648)
86. Pavelka N, Rancati G, Zhu J, Bradford WD, Saraf A, Florens L, Sanderson BW, Hattem GL, Li R. 2010 Aneuploidy confers quantitative proteome changes and phenotypic variation in budding yeast. *Nature* **468**, 321–325. (doi:10.1038/nature09529)
87. Brennan CM, Vaite LP, Wells JN, Santaguida S, Paulo JA, Storchova Z, Harper JW, Marsh JA, Amon A. 2019 Protein aggregation mediates stoichiometry of protein complexes in aneuploid cells. *Genes Dev.* **33**, 1031–1047. (doi:10.1101/gad.327494.119)
88. Torres EM, Dephoure N, Panneerselvam A, Tucker CM, Whittaker CA, Gygi SP, Dunham MJ, Amon A. 2010 Identification of aneuploidy-tolerating mutations. *Cell* **143**, 71–83. (doi:10.1016/j.cell.2010.08.038)
89. Neckers L, Workman P. 2012 Hsp90 molecular chaperone inhibitors: are we there yet? *Clin. Cancer Res.* **18**, 64–76. (doi:10.1158/1078-0432.CCR-11-1000)
90. Usmani S, Bona R, Li Z. 2009 17 AAG for HSP90 inhibition in cancer—from bench to bedside. *Curr. Mol. Med.* **9**, 654–664. (doi:10.2174/156652409788488757)
91. Tang Y, Williams BR, Siegel JJ, Amon A. 2011 The energy and proteotoxic stress-inducing compounds AICAR and 17-AAG antagonize proliferation in aneuploid cells. *Cell* **144**, 499–512.
92. Tang Y-C, Williams BR, Siegel JJ, Amon A. 2011 Identification of aneuploidy-selective antiproliferation compounds. *Cell* **144**, 499–512. (doi:10.1016/j.cell.2011.01.017)
93. Baker DJ, Chen J, Van Deursen JM. 2005 The mitotic checkpoint in cancer and aging: what have mice taught us. *Curr. Opin. Cell Biol* **17**, 583–589. (doi:10.1016/j.ceb.2005.09.011)
94. Stingle S, Stoehr G, Storchova Z. 2013 Activation of autophagy in cells with abnormal karyotype. *Autophagy.* **9**, 246–248. (doi:10.4161/auto.22558)
95. Kaya A, Gerashchenko MV, Seim I, Labarre J, Toledano MB, Gladyshev VN. 2015 Adaptive aneuploidy protects against thiol peroxidase deficiency by increasing respiration via key mitochondrial proteins. *Proc. Natl Acad. Sci. USA* **112**, 10 685–10 690. (doi:10.1073/pnas.1505315112)
96. Li M, Fang X, Baker DJ, Guo L, Gao X, Wei Z, Han S, van Deursen JM, Zhang P. 2010 The ATM-p53 pathway suppresses aneuploidy-induced tumorigenesis. *Proc. Natl Acad. Sci. USA* **107**, 14 188–14 193. (doi:10.1073/pnas.1005960107)
97. Clemente-Ruiz M, Murillo-Maldonado JM, Benhra N, Barrio L, Pérez L, Quiroga G, Nebreda AR, Milán M. 2016 Gene dosage imbalance contributes to chromosomal instability-induced tumorigenesis. *Dev. Cell* **36**, 290–302. (doi:10.1016/j.devcel.2016.01.008)
98. Passerini V, Storchová Z. 2016 Too much to handle: how gaining chromosomes destabilizes the genome. *Cell Cycle.* **15**, 2867–2874. (doi:10.1080/15384101.2016.1231285)
99. Burrell RA *et al.* 2013 Replication stress links structural and numerical cancer chromosomal instability. *Nature* **494**, 492–496. (doi:10.1038/nature11935)
100. Derehli-Öz A, Versini G, Halazonetis TD. 2011 Studies of genomic copy number changes in human cancers reveal signatures of DNA replication stress. *Mol. Oncol.* **5**, 308–314. (doi:10.1016/j.molonc.2011.05.002)
101. Reish O, Regev M, Kanesky A, Girafi S, Mashevich M. 2011 Sporadic aneuploidy in PHA-stimulated lymphocytes of trisomies 21, 18, and 13. *Cytogenet. Genome Res.* **133**, 184–189. (doi:10.1159/000323504)
102. Santaguida S *et al.* 2017 Chromosome mis-segregation generates cell-cycle-arrested cells with complex karyotypes that are eliminated by the immune system. *Dev. Cell* **41**, 638–651. (doi:10.1016/j.devcel.2017.05.022)
103. Bakhom SF *et al.* 2018 Chromosomal instability drives metastasis through a cytosolic DNA response. *Nature* **553**, 467–472. (doi:10.1038/nature25432)
104. Sun L, Wu J, Du F, Chen X, Chen ZJ. 2013 Cyclic GMP-AMP synthase is a cytosolic DNA sensor that activates the type I interferon pathway. *Science* **339**, 786–791. (doi:10.1126/science.1232458)
105. Marcus A, Mao AJ, Lensink-Vasan M, Wang L, Vance RE, Raulat DH. 2018 Tumor-derived cGAMP triggers a STING-mediated interferon response in non-tumor cells to activate the NK cell response. *Immunity* **49**, 754–763. (doi:10.1016/j.immuni.2018.09.016)
106. MacKenzie KJ *et al.* 2017 CGAS surveillance of micronuclei links genome instability to innate

- immunity. *Nature* **548**, 461–465. (doi:10.1038/nature23449)
107. Ablasser A, Goldeck M, Cavarlar T, Deimling T, Witte G. 2014 cGAS produces a 2′–5′-linked cyclic dinucleotide second messenger that activates STING. *Nature* **498**, 380–384. (doi:10.1038/nature12306.cGAS)
  108. Barber GN. 2015 STING: infection, inflammation and cancer. *Nat. Rev. Immunol.* **15**, 760–770. (doi:10.1038/nri3921)
  109. Xia T, Konno H, Barber GN. 2016 Recurrent loss of STING signaling in melanoma correlates with susceptibility to viral oncolysis. *Cancer Res.* **76**, 6747–6759. (doi:10.1158/0008-5472.CAN-16-1404)
  110. Xia T, Konno H, Ahn J, Barber GN. 2016 Deregulation of STING signaling in colorectal carcinoma constrains DNA damage responses and correlates with tumorigenesis. *Cell Rep.* **14**, 282–297. (doi:10.1016/j.celrep.2015.12.029)
  111. Song S *et al.* 2017 Decreased expression of STING predicts poor prognosis in patients with gastric cancer. *Sci. Rep.* **7**, 39858. (doi:10.1038/srep39858)
  112. Jiang H, Xue X, Panda S, Kawale A, Hooy RM, Liang F, Sohn J, Sung P, Gekara NO. 2019 Chromatin-bound cGAS is an inhibitor of DNA repair and hence accelerates genome destabilization and cell death. *EMBO J.* **38**, 1–17. (doi:10.15252/embj.2019102718)
  113. Khoo LT, Chen L. 2018 Role of the cGAS–STING pathway in cancer development and oncotherapeutic approaches. *EMBO Rep.* **19**, e46935. (doi:10.15252/embr.201846935)
  114. He Q *et al.* 2018 Chromosomal instability-induced senescence potentiates cell non-autonomous tumorigenic effects. *Oncogenesis* **7**, 62. (doi:10.1038/s41389-018-0072-4)
  115. Wang C *et al.* 2019 Inducing and exploiting vulnerabilities for the treatment of liver cancer. *Nature* **574**, 268–272. (doi:10.1038/s41586-019-1607-3)
  116. Lentini L, Barra V, Schillaci T, Di Leonardo A. 2012 MAD2 depletion triggers premature cellular senescence in human primary fibroblasts by activating a P53 pathway preventing aneuploid cells propagation. *J. Cell. Physiol.* **227**, 3324–3332. (doi:10.1002/jcp.24030)
  117. Musio A, Montagna C, Zambroni D, Indino E, Barbieri O, Citti L, Villa A, Ried T, Vezioni P. 2003 Inhibition of BUB1 results in genomic instability and anchorage-independent growth of normal human fibroblasts. *Cancer Res.* **63**, 2855–2863.
  118. Macedo JC *et al.* 2018 FoxM1 repression during human aging leads to mitotic decline and aneuploidy-driven full senescence. *Nat. Commun.* **9**, 1–17. (doi:10.1038/s41467-018-05258-6)
  119. Andriani GA *et al.* 2016 Whole chromosome instability induces senescence and promotes SASP. *Sci. Rep.* **6**, 35218. (doi:10.1038/srep35218)
  120. Schosserer M, Grillari J, Breitenbach M. 2017 The dual role of cellular senescence in developing tumors and their response to cancer therapy. *Front. Oncol.* **7**, 278. (doi:10.3389/fonc.2017.00278)
  121. Coppé J-P, Desprez P-Y, Krtolica A, Campisi J. 2010 The senescence-associated secretory phenotype: the dark side of tumor suppression. *Annu. Rev. Pathol.* **5**, 99–118. (doi:10.1146/annurev-pathol-121808-102144)
  122. Bargiela-Iparraguirre J, Prado-Marchal L, Pajuelo-Lozano N, Jiménez B, Perona R, Sánchez-Pérez I. 2014 Mad2 and BubR1 modulates tumorigenesis and paclitaxel response in MKN45 gastric cancer cells. *Cell Cycle* **13**, 3590–3601. (doi:10.4161/15384101.2014.962952)
  123. Demaria M *et al.* 2017 Cellular senescence promotes adverse effects of chemotherapy and cancer relapse. *Cancer Discov.* **7**, 165–176. (doi:10.1158/2159-8290.CD-16-0241)
  124. Donnelly N, Passerini V, Dürbaum M, Stinglee S, Storchová Z. 2014 HSF 1 deficiency and impaired HSP 90-dependent protein folding are hallmarks of aneuploid human cells. *EMBO J.* **21**, 2591–2601.
  125. Draviam VM *et al.* 2007 A functional genomic screen identifies a role for TAO1 kinase in spindle-checkpoint signalling. *Nat. Cell Biol.* **9**, 556–564. (doi:10.1038/ncb1569)
  126. Johnson VL, Scott MIF, Holt SV, Hussein D, Taylor SS. 2004 Bub1 is required for kinetochore localization of BubR1, Cenp-E, Cenp-F and Mad2, and chromosome congression. *J. Cell Sci.* **117**, 1577–1589. (doi:10.1242/jcs.01006)
  127. Dodgson SE, Santaguida S, Kim S, Sheltzer J, Amon A. 2016 The pleiotropic deubiquitinase ubp3 confers aneuploidy tolerance. *Genes Dev.* **30**, 2259–2271. (doi:10.1101/gad.287474.116)
  128. Liu D, Shaikat Z, Xu T, Denton D, Saint R, Gregory S. 2016 Autophagy regulates the survival of cells with chromosomal instability. *Oncotarget* **7**, 63 913–63 923. (doi:10.18632/oncotarget.11736)
  129. Hwang S *et al.* 2017 Serine-dependent sphingolipid synthesis is a metabolic liability of aneuploid cells. *Cell Rep.* **21**, 3807–3818. (doi:10.1016/j.celrep.2017.11.103)
  130. Shaikat Z, Wong HWS, Nicolson S, Saint RB, Gregory SL. 2012 A screen for selective killing of cells with chromosomal instability induced by a spindle checkpoint defect. *PLoS ONE* **7**, e47447. (doi:10.1371/journal.pone.0047447)
  131. Shaikat Z, Liu D, Choo A, Hussain R, O’Keefe L, Richards R, Saint R, Gregory SL. 2015 Chromosomal instability causes sensitivity to metabolic stress. *Oncogene* **34**, 4044–4055. (doi:10.1038/onc.2014.344)
  132. Kim H-S *et al.* 2010 SIRT3 is a mitochondria-localized tumor suppressor required for maintenance of mitochondrial integrity and metabolism during stress. *Cancer Cell* **17**, 41–52. (doi:10.1016/j.ccr.2009.11.023)
  133. Jeong SM *et al.* 2013 SIRT4 has tumor-suppressive activity and regulates the cellular metabolic response to DNA damage by inhibiting mitochondrial glutamine metabolism. *Cancer Cell* **23**, 450–463. (doi:10.1016/j.ccr.2013.02.024)
  134. Zamponi E *et al.* 2018 Nrf2 stabilization prevents critical oxidative damage in Down syndrome cells. *Aging Cell* **17**, e12812. (doi:10.1111/ace1.12812)
  135. Lamm N, Ben-David U, Golan-Lev T, Storchová Z, Benvenisty N, Kerem B. 2016 Genomic instability in human pluripotent stem cells arises from replicative stress and chromosome condensation defects. *Cell Stem Cell* **18**, 253–261. (doi:10.1016/j.stem.2015.11.003)
  136. Harding SM, Benci JL, Irianto J, Discher DE, Minn AJ, Greenberg RA. 2017 Mitotic progression following DNA damage enables pattern recognition within micronuclei. *Nature* **548**, 466–470. (doi:10.1038/nature23470)