



university of
groningen

Information brochure

Linnaeusborg

**Associate or Full Professor
of Host-Microbe Biology**

Appointment Details – January 2018

www.rug.nl

0.0 | Contents

University of Groningen

Structure and Governance

Teaching and Research

International

Faculty of Science and Engineering

Research

Education

Groningen Biomolecular Sciences and Biotechnology Institute (GBB)

Research Themes

Programmes

Appointment of Associate or Full Professor of Host-Microbe Biology

Person Specification

Conditions of Employment

How to Apply

Groningen: Small City, Full of Life

1.0 | University of Groningen

The University of Groningen is a research university with a global outlook. Quality has been a top priority for the University for more than four hundred years, and with great success: the University is currently in or around the top 100 on several influential ranking lists, including 83rd by Times Higher Education and 113th in the 2018 QS World University Rankings.

The University is truly global and has strong collaborations with a number of renowned foreign universities, including Uppsala, Göttingen, Ghent, Tsinghua University, Osaka University, UCLA, and the University of Pennsylvania. University of Groningen attracts a large number of staff and students from the Netherlands and abroad and currently has over 27,000 students and about 5,500 staff members.

Geographically, the University is rooted in the north of the Netherlands and can be reached from Amsterdam and other main cities in only 2 hours by train or car. Talent is nurtured, enabling the University to bridge the gap between science and society. The University is committed to actively collaborating with partners outside academia, with a special focus on the societal themes Healthy Ageing, Energy and Sustainable Society.

For more information visit <http://www.rug.nl>

Structure and Governance

The University of Groningen consists of eleven Faculties, namely:

- ▶ Faculty of Arts;
- ▶ Faculty of Behavioural and Social Sciences;
- ▶ Faculty of Economics and Business;
- ▶ Faculty of Law;
- ▶ Faculty of Medical Sciences;
- ▶ Faculty of Philosophy;
- ▶ Faculty of Spatial Sciences;
- ▶ Faculty of Science and Engineering;
- ▶ Faculty of Theology and Religious Studies;
- ▶ University College Groningen;
- ▶ University of Groningen/Campus Fryslân.

The Executive Board is accountable to the Minister of Education, Culture and Science. The Committee of Deans, consisting of the Chairs of all Faculty Boards, has an advisory function across a variety of fields. The University Supervisory Board is responsible for supervising the Executive Board and the management of the entire University.

For more information on the structure and governance of the University, please visit

<http://www.rug.nl/about-us/organization/administrative/>

Teaching and Research

The University provides high quality research and teaching in a broad and varied range of fields of study. It is distinguished by the close link the University has forged between research activity and teaching.

University of Groningen is among the top European universities in academic research. It is successful because it applies fundamental academic research in an innovative way when dealing with challenging scientific and societal problems. Those engaged in teaching at the University actively involve their students in their research, so that both parties are stimulated to continue to push boundaries.

Developments in academia often emerge at the interface of several different subjects, which is why many research groups at the University of Groningen are multidisciplinary. In addition, the University participates in national and international research programmes, and many Groningen-based researchers collaborate with colleagues from all over the world on a daily basis.

Further information on research at the University of Groningen may be found at

<http://www.rug.nl/research/>

International

Research and teaching at the University of Groningen is internationally oriented. Students from every continent can prepare themselves at Groningen for their global careers. Internationalisation is one of the main focus points on the strategic policy agenda of the University, and an important instrument in the improvement of quality, innovation and diversity.

The University has a strong international reputation and has steadily climbed in international rankings. The University of Groningen currently has over 5,000 international students from 120 different countries, and 37% of staff and 40% of all PhD students are international.



Linnaeusborg

2.0 | Faculty of Science and Engineering

The Faculty of Science and Engineering is a world-leading multidisciplinary Faculty harbouring a kaleidoscope of disciplines and research strengths. The Faculty offers programmes in research and education ranging from nanomaterials and bio-machinery to astronomy, from mathematics to pharmacy, from neurosciences to computer science, and from molecular and evolutionary biology to marine biology. The Faculty consists of 12 research institutes and has an annual budget of over €130m. It currently has over 5,000 students and 1,330 staff including 121 full professors and 780 PhD students.

In 2016, Professor Ben Feringa of the Faculty of Science and Engineering was awarded the 'Nobel Prize' in Chemistry.

Research

The Faculty of Science and Engineering has a track record of research excellence in many of its fields. This is reflected in the large amount of externally acquired funding, such as repeated success in the ERC Grant and national programmes. Researchers at the Faculty address fundamental key questions while collaborating with partners from industry, the medical world and other realms of society. Frontline research groups explore new fields such as synthetic biology and sustainable energy use.

For information on Research Institutes please visit:

<https://www.rug.nl/research/fse/institutes-and-centres>

To fully harness the opportunities for interdisciplinary research in a broad Faculty and to play to research strengths, research is profiled by four themes:

- ▶ Molecular Life and Health;
- ▶ Adaptive Life;
- ▶ Advanced Materials;
- ▶ Data Science and Systems Complexity.

For more information on the Faculty's research themes please visit:

<https://www.rug.nl/research/fse/themes/>

Education

The Faculty of Science and Engineering offers 13 Bachelor's and 26 Master's programmes.

Most Bachelor's and Master's Degree programmes are English-taught, allowing foreign students to follow all course units.

The Faculty's education covers three areas:

- ▶ Natural Sciences and Technology
- ▶ Life Sciences
- ▶ Information and Cognition

For a full list of Bachelor's programmes please visit:

<https://www.rug.nl/bachelors/faculty-of-science-and-engineering>

For a full list of Master's programmes please visit:

<https://www.rug.nl/masters/faculty-of-science-and-engineering>



3.0 | Groningen Biomolecular Sciences and Biotechnology Institute (GBB)

The Groningen Biomolecular Sciences and Biotechnology Institute is a centre for top noted research and teaching in biomolecular sciences, focusing on curiosity-driven science, with application outlets into (industrial) biotechnology and biomedicine. GBB hosts 13 vibrant research units in the subdisciplines biochemistry, bioinformatics, biophysical chemistry, cell biology, chemical biology, enzymology, genetics, microbiology and systems biology.

Research themes

The Institute currently centres around the two focal areas 'Molecular Mechanisms of Biological Processes' and 'Physiology and Systems Biology'. While the first focuses on generating molecular understanding of enzymes and complex machineries, the second area aims at attaining understanding at the systems-level of prokaryotic and eukaryotic cells. Together they lay the foundation for the engineering of complex molecular and cellular systems, such as engineered, or even synthetic, cells.

The overarching research goals are:

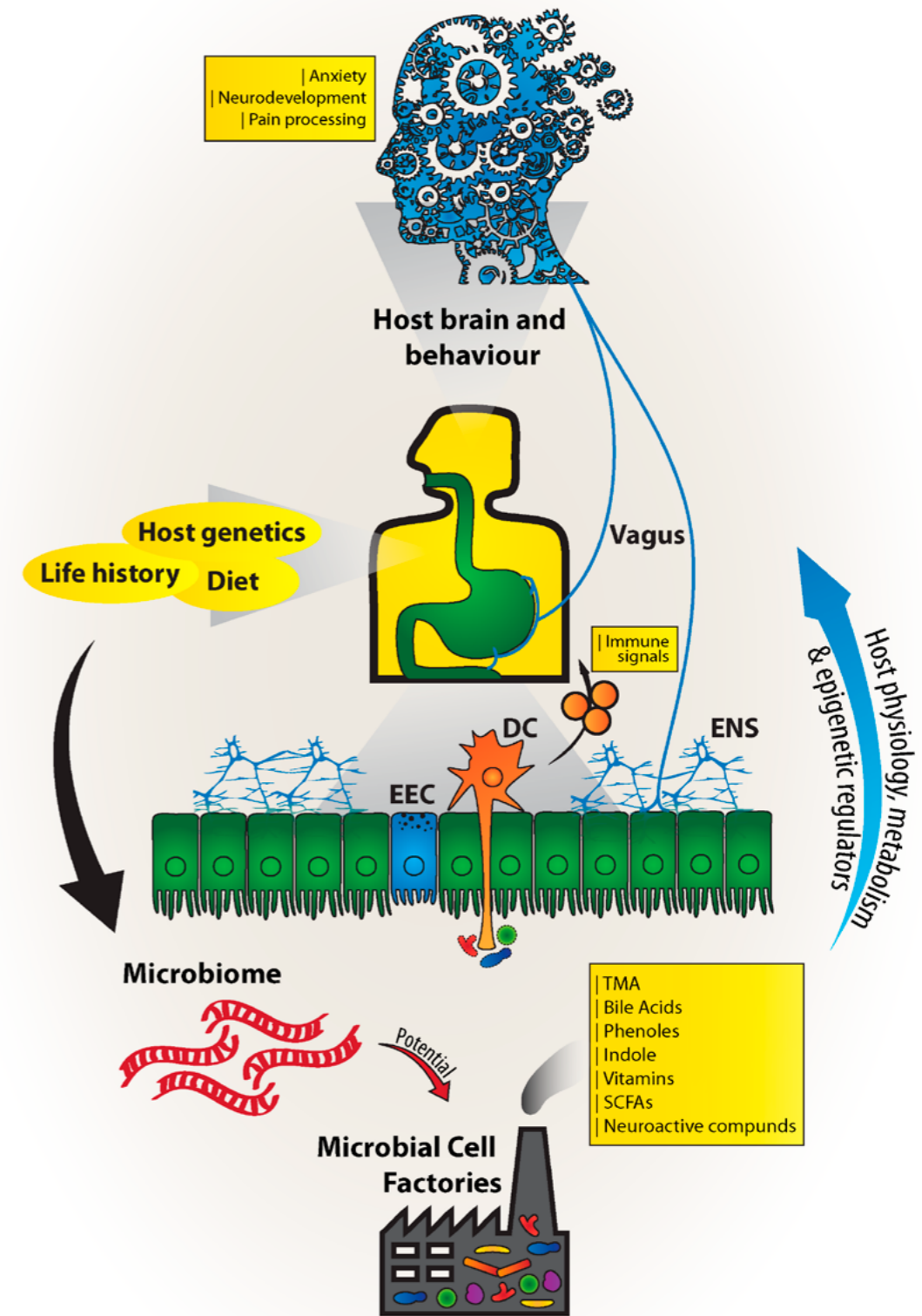
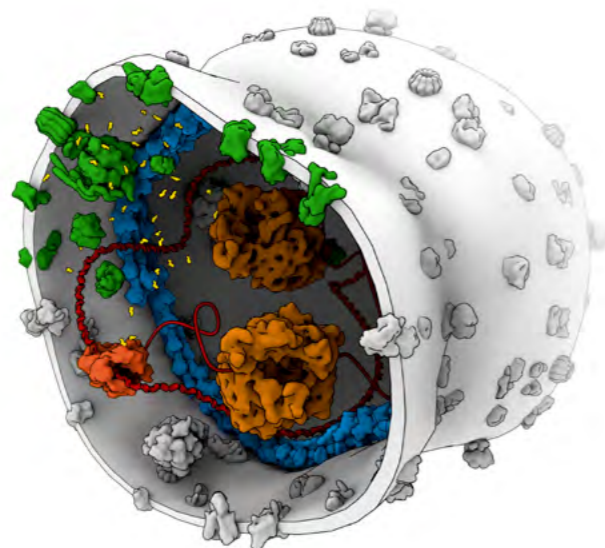
- ▶ to establish the minimal working principles of molecular systems driving specific biological functions in living cells;
- ▶ to understand the conditions and constraints under which these different biological systems (can) work together, including the quinary structure of the cell and the basic principles of spatio-temporal control;
- ▶ to engineer molecular systems for biotechnological or biomedical applications;
- ▶ to understand the physiology of microorganisms (bacteria, lower eukaryotes) at the systems level, including cellular homeostasis, biogenesis of proteins and organelles and host-microbe interactions.

Programmes

GBB contributes to challenging educational programmes for bachelor and master students in the field of Molecular Life Sciences, the Research Master Molecular Biology and Biotechnology (MBB), and the track Chemical Biology of Chemistry. The MBB Master is an international programme that attracts students from the Netherlands and abroad (about 40% foreign students). Approximately half of these students continue on a PhD trajectory, either within or outside GBB.

For more information on GBB's educational programme please visit:

<https://www.rug.nl/research/gbb/education/>



4.0 | Appointment of Associate or Full Professor of Host-Microbe Biology

The Faculty of Science and Engineering is seeking to appoint an Associate or Full Professor in Host-Microbe Biology in the Groningen Biomolecular Sciences and Biotechnology Institute (GBB). GBB is an Institute where fundamental biomolecular questions and biotechnological and biomedical applications go hand in hand. The envisioned research group combines expertise in areas such as cell biology, immunology, microbiology, functional genomics, glycomics and/or systems biology to further the understanding of the molecular interactions occurring in the cross-talk between microbes and their mammalian hosts.

Are you the one who will make a major contribution to the field of host-microbe biology?

Job description

You will,

- ▶ develop your own independent line of research in the field of host-microbe biology;
- ▶ investigate beneficial interactions between commensals and their mammalian hosts and/or between pathogens and their host;
- ▶ combine expertise in areas such as cell biology, immunology, microbiology, functional genomics, glycomics and systems biology to further the understanding of the cross-talk between microbes and their mammalian hosts;
- ▶ strengthen the international position of GBB in this field, through publishing in high-impact journals and contributing to international conferences
- ▶ supervise (under)graduate students and postdoctoral fellows in the area of host-microbe biology and adjoining fields;
- ▶ contribute to the relevant teaching programmes of the bachelors and masters education of the Undergraduate and Graduate Schools of Science and Engineering;
- ▶ attract extramural funding;
- ▶ contribute to management and organisation of tasks of the Institute, and overarching activities within the Faculty.

Qualifications

- ▶ PhD degree in a field firmly associated with host-microbe interactions and minimally two years of postdoctoral experience outside the Netherlands;
- ▶ expertise in mechanisms of mammalian and host-microbe interactions, exploiting modern (analytical) technologies, and links to adjoining fields such as immunology, functional genomics, glycomics, and systems biology;
- ▶ excellent research qualities as evidenced by an outstanding track record with publications in high-impact international peer-reviewed journals and contributions to renowned conferences;
- ▶ excellent teaching skills, motivating students of different disciplines and demonstrable affinity for and quality in teaching;
- ▶ management and organisational experience appropriate to career stage;
- ▶ successful acquisition of external funding appropriate to career stage;
- ▶ excellent communications skills and a team player;
- ▶ excellent command of the English language.

Conditions of employment

The position will be offered at the level of Associate or Full Professor. The (tenured) Associate Professor has ius promovendi, i.e. the legal right to formally complete the supervision of PhD students. After 4-7 years there will be an assessment of performance based on established criteria

<https://www.rug.nl/fse/organization/vacatures/vacatures/career-paths-in-science-edition-3>

If the outcome is positive, the Associate Professor will be promoted to a Full Professor.

Salary is according to university standards. In addition to the primary salary the University offers 8% holiday allowance and an end-of-year bonus of 8.3%.

The University of Groningen provides career services for partners of new faculty members moving to Groningen

<http://www.rug.nl/about-us/work-with-us/that-is-why/dual-career-support/>

The University of Groningen has adopted an active policy to increase the number of female scientists across all disciplines of the university. Therefore, female candidates are especially encouraged to apply.

How to apply

An executive search exercise is being undertaken by Perrett Laver to assist the recruitment committee. Applications should consist of a covering letter explaining motivation and qualifications for the position and a full curriculum vitae, including a list of publications.

Perrett Laver may be contacted for informal enquiries and questions about the post on +44 (0)20 7340 6229 or Laura.Stuart@perrettlaver.com.

Applications can be uploaded at www.perrettlaver.com/candidates, quoting reference number 3296.

Applications will be considered by the recruitment committee and preliminarily shortlisted candidates will subsequently be invited for informal conversations with the University, after which a formal shortlist of candidates will be invited for interview and campus visits. Selection of and negotiations with the preferred candidate will take place thereafter.



5.0 | Groningen: Small City, Full of Life

As the economic and cultural capital of the region, the city enjoys a bustling atmosphere, while retaining a safe community character.

As a lively university city, with a population of around 200,000, Groningen has the youngest average population in the Netherlands. It has a long and turbulent history, which is evident through its historic warehouses, courts and buildings. Groningen is also a city with character, with numerous examples of innovative architecture.

The University has a visible presence: the historic buildings in the inner-city tell the tale of a rich academic tradition, while the University Medical Centre Groningen is an example of the city's contemporary architecture.

In 2007, the European Commission carried out research among the residents of 75 larger and medium-sized cities, one of which was Groningen. The result was striking: the residents of Groningen are Europe's most contented citizens. Since then, a whole new stream of visitors has come to at the city; all intent on discovering the 'Groningen Secret'.

The Netherlands

The Kingdom of the Netherlands consists of twelve provinces in Western Europe (commonly known as the Netherlands) and three islands in the Caribbean. The Netherlands, with a population of over 16 million, is a constitutional monarchy with a parliamentary system. It is a geographically low-lying country, with about 20% of its area and 21% of its population located below sea level, and 50% of its land lying less than one metre above sea level. This small nation boasts a wealth of cultural heritage and is famous for its painters, windmills, tulips, clogs and notoriously flat lands. Today international trade is still the main driver of economic growth. Holland is the sixteenth largest economy in the world and one of the ten leading exporting nations.

As a modern European country, it preserves its highly international character and is known for its liberal mentality. As a founding member of the EU and NATO, and host to the International Court of Justice in The Hague, the Netherlands is at the heart of international cooperation. Its small size, welcoming attitude to travellers, and many sights make it a unique and easy to discover destination.

The Dutch are known for their acceptance of diversity and their command of foreign languages, English in particular. English is more widely spoken in the Netherlands than in any other country on the continent, making life for foreigners particularly easy. The Netherlands has some of the highest-quality health care and schools globally. Health insurance typically costs about €100 per adult per month (and children below 18 are insured without charge). Primary and Secondary education in the Netherlands is of world-class quality and offered for free (in government-subsidised schools). Tuition fees in the 13 research intensive universities, all of which rank in the top-200 of the THE World University ranking, range at around €2,000 per year for EU students (non-EU students' tuition fees start from €6,000/year).





university of
 groningen