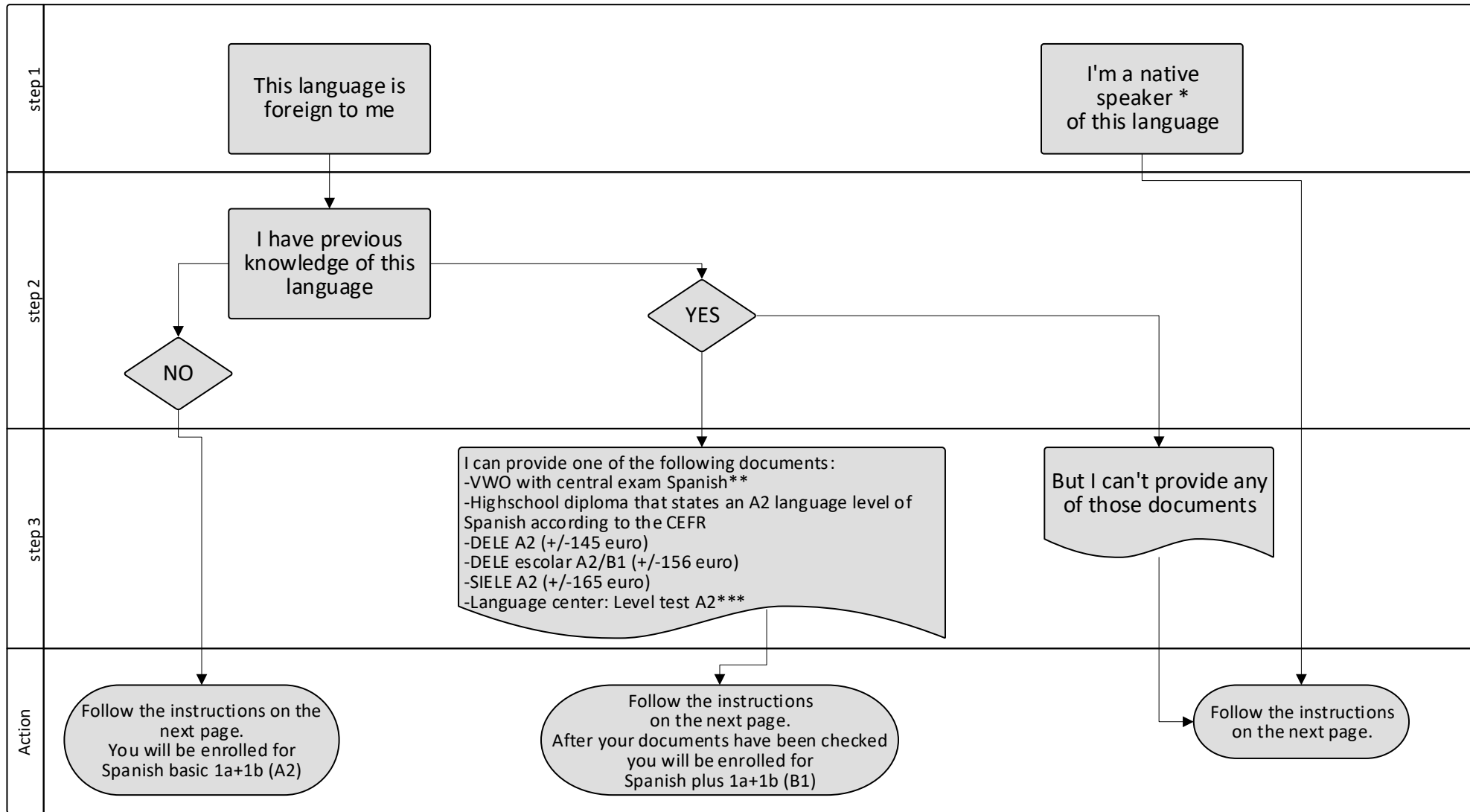


# Spanish major A2 or B1 - 2024 2025 Semester 1



\*\* If you have a VWO with centraal examen Spanish and you want to enroll for Spanish plus 1a+1b (B1), you will have to take an additional (oral production) test. If you wish to sign up, please let us know and we will further inform you.

\*\*\* Please note that if the student considers that s/he may have a higher level than A2 and, therefore, the student would like an exemption from one of the courses (e.g. Plus 1a or Plus 1a and 1b), the only way is by presenting a recent (less than one year old) DELE or SIELE certificate of the corresponding language level. In those cases, the result of the language level test from the Language Center does **NOT** grant an exemption.

\* Native speakers are students who have obtained their A-level diploma (secondary school) or equivalent:  
 - in an institution where the target language is used as the language of instruction or  
 - in a country where the target language is the official language used in the educational system

Please read the instructions on the next page and fill in the form

**\* Please, fill in this form before July 1st. Applications after this date will not be accepted!**

In case the form asks you to attach diplomas/certificates:

- Good quality PDF files only and presented right-side-up.
- Clearly named: your last name + name of the document.
- If not available in Dutch, English, German or the chosen language send us a certified translation together with the original document.

When the form asks you to send an email, always mention:

- Name
- Student number
- Degree programme
- Choice of language (if necessary with Plus or Basic level)

### **Procedure**

1. Follow the steps as indicated in the flow chart and fill in the form.
2. The secretariat will enrol you in Progress or you will be contacted for further information.
3. The secretariat will enrol you in a seminar group in Brightspace (only if group enrolment for your language is applicable)

Please note that although your application will be registered, the actual enrolment in Progress and Brightspace may only take place in August. After filling in the application form, further correspondence is not necessary. If more information is needed, you will be contacted.

For more information, please see: <https://student.portal.rug.nl/infonet/studenten/let/faculty-sp-content/tv-onderwijs/>