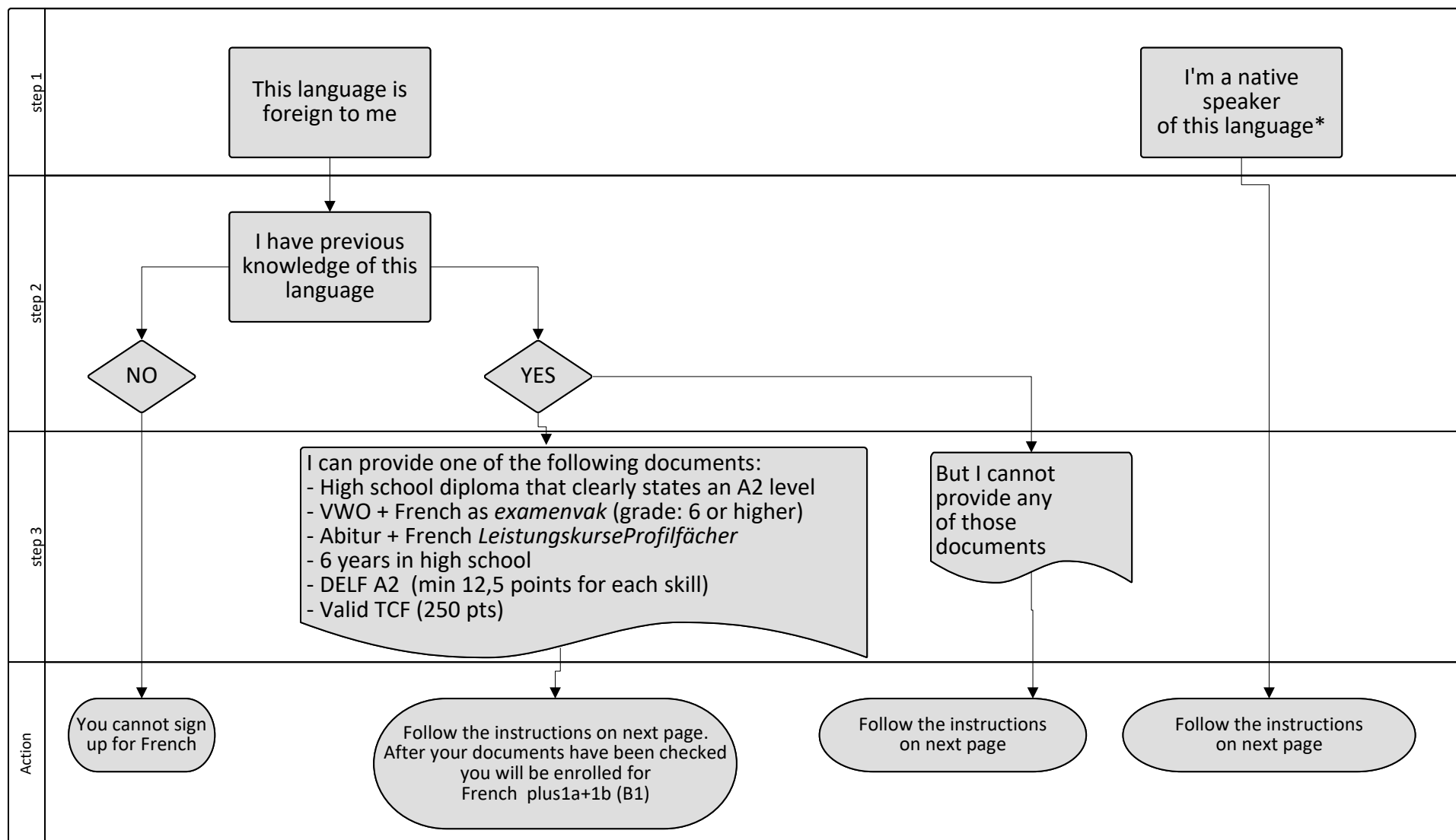


# French major B1 - 2024 2025 Semester 1



\*Native speakers are students who have obtained their A-level diploma (secondary school) or equivalent:

- in an institution where the target language is used as the language of instruction or,
- in a country where the target language is the official language used in the educational system.

Please read the instructions on the next page and fill in the form

**\* Please, fill in this form before July 1st. Applications after this date will not be accepted!**

In case the form asks you to attach diplomas/certificates:

- Good quality PDF files only and presented right-side-up.
- Clearly named: your last name + name of the document.
- If not available in Dutch, English, German or the chosen language send us a certified translation together with the original document.

When the form asks you to send an email, always mention:

- Name
- Student number
- Degree programme
- Choice of language (if necessary with Plus or Basic level)

### **Procedure**

1. Follow the steps as indicated in the flow chart and fill in the form.
2. The secretariat will enrol you in Progress or you will be contacted for further information.
3. The secretariat will enrol you in a seminar group in Brightspace (only if group enrolment for your language is applicable)

Please note that although your application will be registered, the actual enrolment in Progress and Brightspace may only take place in August. After filling in the application form, further correspondence is not necessary. If more information is needed, you will be contacted.

For more information, please see: <https://student.portal.rug.nl/infonet/studenten/let/faculty-sp-content/tv-onderwijs/>