

# Newsletter

# Teaching Academy Groningen

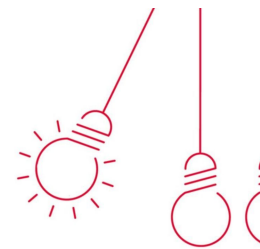
In this newsletter, the Teaching Academy Groningen would like to update you on the developments regarding the Communities of Expertise and on the upcoming [webinar](#) on the 15th of June:

[Teaching Assistants \(TAs\) to the rescue? How can TAs help our teachers?](#)

---

## TAG and The Communities of Expertise

The Teaching Academy Groningen (TAG) is a platform to share good practises and develop knowledge in order to enhance innovative education at the University of Groningen. As mentioned in our previous newsletter, we currently have four Communities of Expertise: Blended Learning, Interdisciplinary Education for Employability, Inclusivity & Diversity and Teaching Innovation in STEM (Science, Technology, Engineering, and Mathematics). To generate conversation within these communities, the leaders have prepared a blog with key questions of interest, you can read a short version below and the rest can be found on our dedicated [Nestor page](#), Teaching Academy Community of Practice. If you can't access this page, please contact us, [tag@rug.nl](mailto:tag@rug.nl) and we will gladly assist you by adding you to the community.



---

## Accelerating with Blended learning

### Looking for the right pace to take the next steps with the faculties

We see the mission of our Community of Expertise is to exchange best practices, help and inspire each other with blended learning. We are particularly interested in the lecturer's perceptions of how they will use Blended Learning moving forward. What really works in your course? What aspects of Blended Learning have the students really enjoyed? And where can TAG help to incorporate blended learning in a way and at a pace that suits each individual lecturer? As we face increasing student enrollments, we will need to incorporate blended learning (some face-to-face and other digital aspects of interaction and learning). How can we accommodate this needed change while minimizing the stress for the faculties? What can we put in place before the fall? If you would like to read more and/or contribute to our blog space about this subject, please go to blended learning section on [the discussion group on Nestor](#)







and/or to contribute to our blog space about this subject, please go to Research in higher education section on [the discussion group on Nestor](#)

---

## Join TAG today

What are your struggles? Where do you need help or advice? Or do you have something that works particularly well to share? TAG is the place for teachers to collaborate. Join the Community of Expertise that reflects your interest. Interested in a particular Community of Expertise?

You are invited to contact the [Leader of the Community of Expertise of your interest](#) or send your email to the Teaching Academy Groningen team at [tag@rug.nl](mailto:tag@rug.nl)


---

### Upcoming event:

June 15, 12.00 - 13.30

#### [Webinar](#)

Teaching Assistants (TAs) to the rescue? How can TAs help our teachers?

 Forward to a colleague

[Find Out More](#)

Copyright © | 2021 | Teaching Academy Groningen - University of Groningen | All rights reserved.

#### Our mailing address is:

[tag@rug.nl](mailto:tag@rug.nl)

You are receiving this Newsletter because you are on the TAG Contact list.

The Newsletter will give you updates and the latest news about the Teaching Academy Groningen.

This email was sent to <<Email Address>>

[why did I get this?](#) [unsubscribe from this list](#) [update subscription preferences](#)

Teaching Academy Groningen · Broerstraat 5 · GRONINGEN, Groningen 9712 CP · Netherlands

