



university of
 groningen

faculty of economics
 and business

Welcome to

Get Started

Friday, 3 September 2021



university of
 groningen

faculty of economics
 and business

welcome





Online FEB Hangout

Accessible via the Student Portal: studentportal.rug.nl

The screenshot shows the Student Portal interface with the following sections:

- Need to know:** A list of news items including updates on COVID-19, exam rules, and support desk hours.
- Nice to know:** Articles from KNIR about courses, a message of thanks from the Bestuur, and a congratulatory message for a student.
- Student Portal intro:** A thumbnail image of the portal's main interface.
- Courses:** A search bar and a list of courses for the 2021-2022 academic year, including 'Onderwijscurriculum' and 'TrainTool test course'.
- Organizations:** A list of student organizations such as 'Accrediatie economische opleidingen', 'BSC BOK cohort 2020-2021', and 'FEB BOK'.
- FEB Hangout:** A featured section with a star icon and the text 'FEB Hangout', listing various events and resources.





Student representation

A large, semi-transparent thumbnail image of a building, likely a university building, with a play button icon in the center. The text "Student Representation" is overlaid on the image in a bold, red font.

Student Representation

Student representation at FEB

[> Go to animation](#)



university of
 groningen

faculty of economics
 and business

Develop yourself and prepare for your future.



university of
 groningen

faculty of economics
 and business

Develop yourself and prepare for your future.

And for now:

Make it a great year!



university of
 groningen

faculty of economics
 and business

FEB academic culture (and a bit of Dutch culture, too)

By Monique Kroese





And what are the 6 key words that describe YOU? Easy introduction!



university of
 groningen

faculty of economics
 and business

FEB academic culture



&



&



academic culture & environment



FEB academic culture



&



&



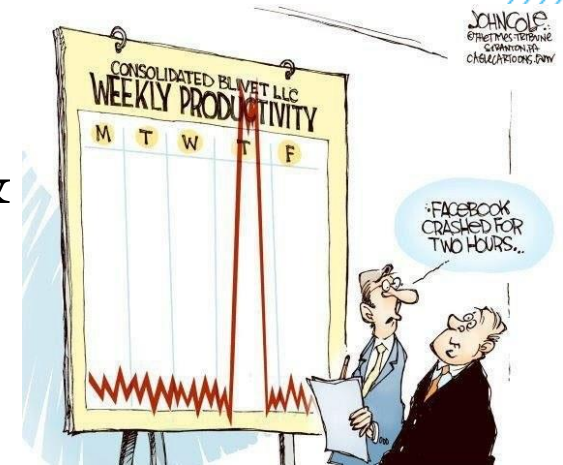
academic culture & environment



&



&





FEB academic culture



&



&



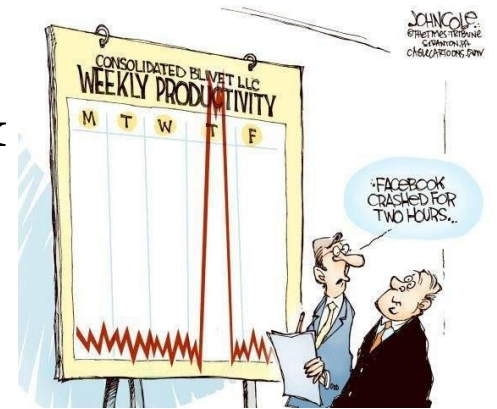
academic culture & environment



&



&



&



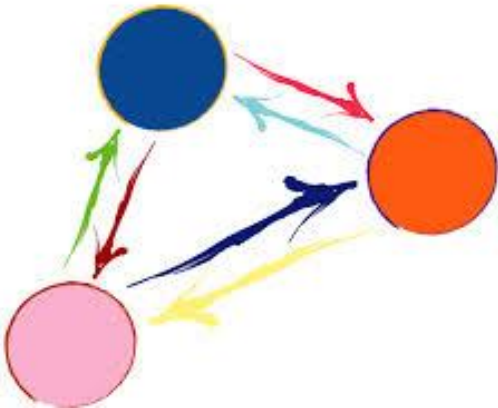


What YOU bring to your new study programme: competencies & expertise developed so far



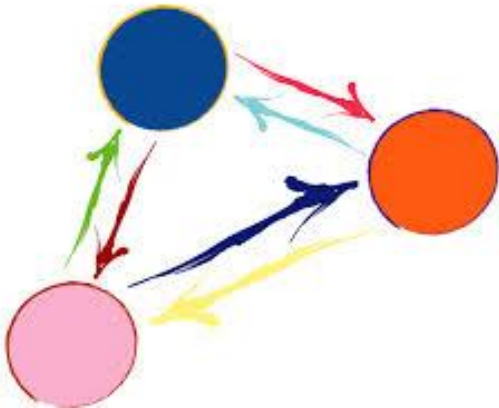
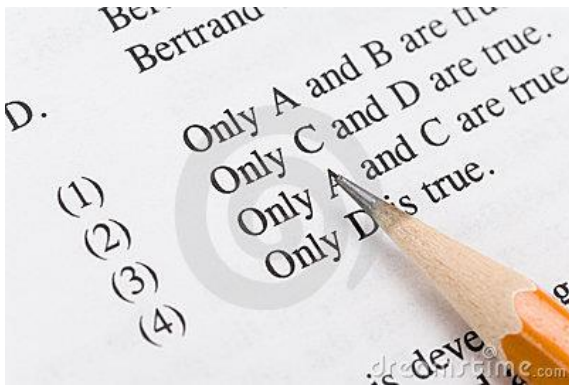


Possible challenges:



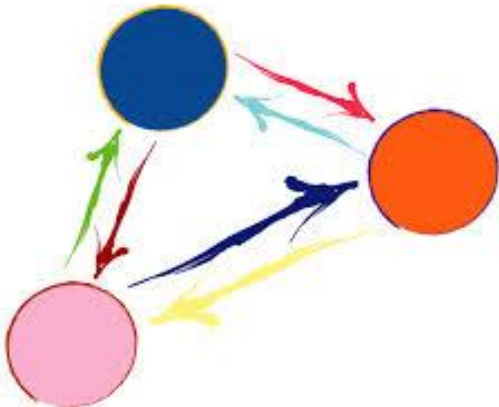
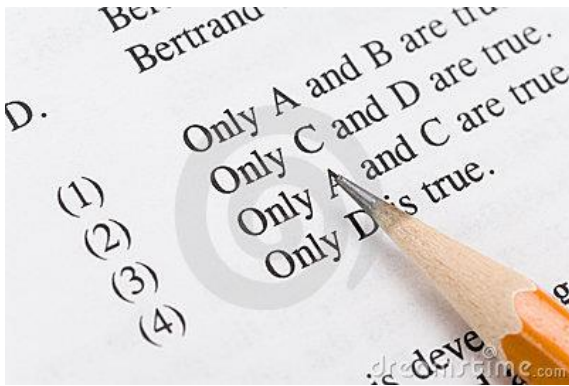


Possible challenges:



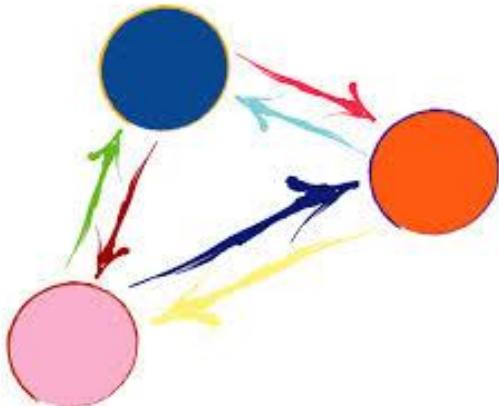
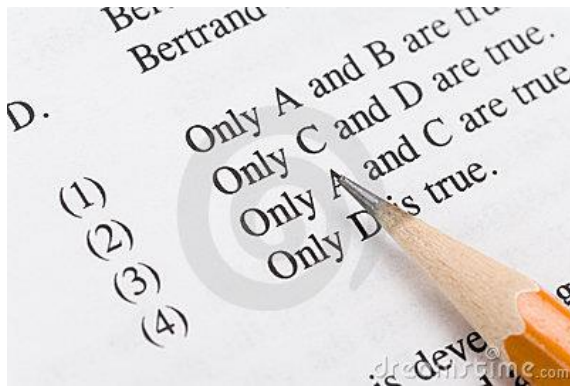


Possible challenges:





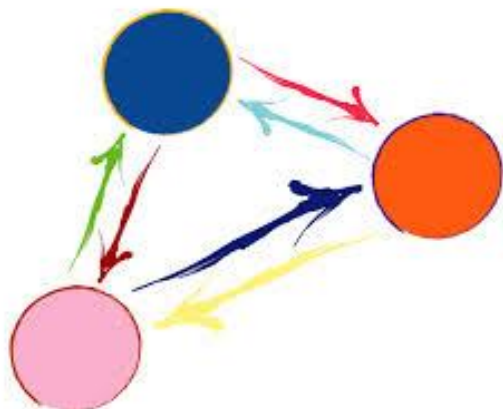
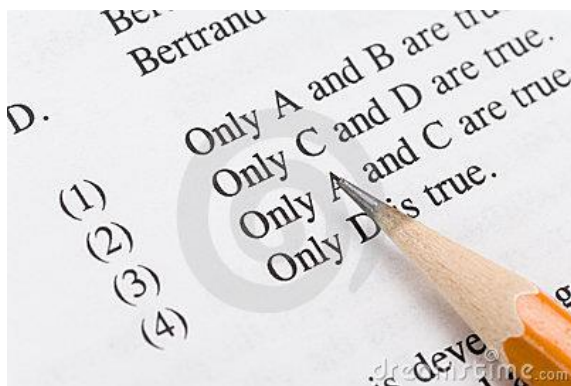
Possible challenges:



Grading Scale	
1	Fully insufficient
2	Insufficient
3	Very unsatisfactory
4	Unsatisfactory
5	Almost satisfactory / fail
6	Satisfactory
7	Very satisfactory
8	Good
9	Very good
10	Excellent



Possible challenges:

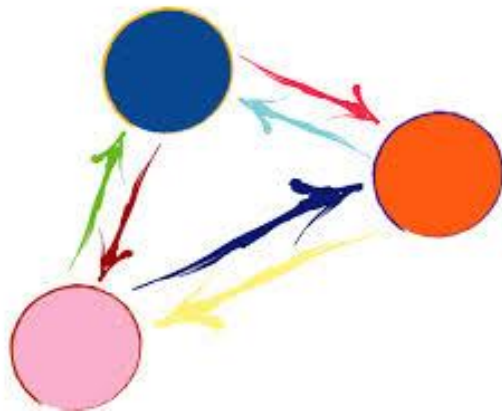
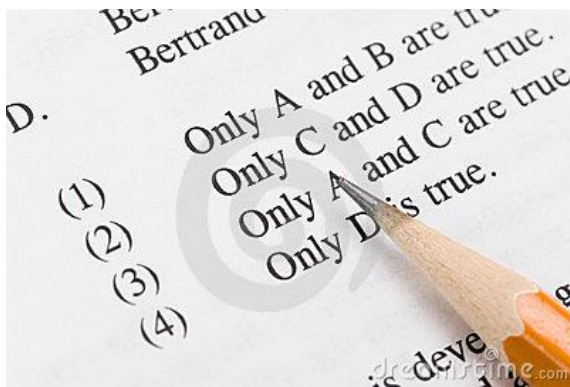


Grading Scale	
1	Fully insufficient
2	Insufficient
3	Very unsatisfactory
4	Unsatisfactory
5	Almost satisfactory / fail
6	Satisfactory
7	Very satisfactory
8	Good
9	Very good
10	Excellent





Possible challenges:



Grading Scale	
1	Fully insufficient
2	Insufficient
3	Very unsatisfactory
4	Unsatisfactory
5	Almost satisfactory / fail
6	Satisfactory
7	Very satisfactory
8	Good
9	Very good
10	Excellent





Challenges: problematic or exciting?

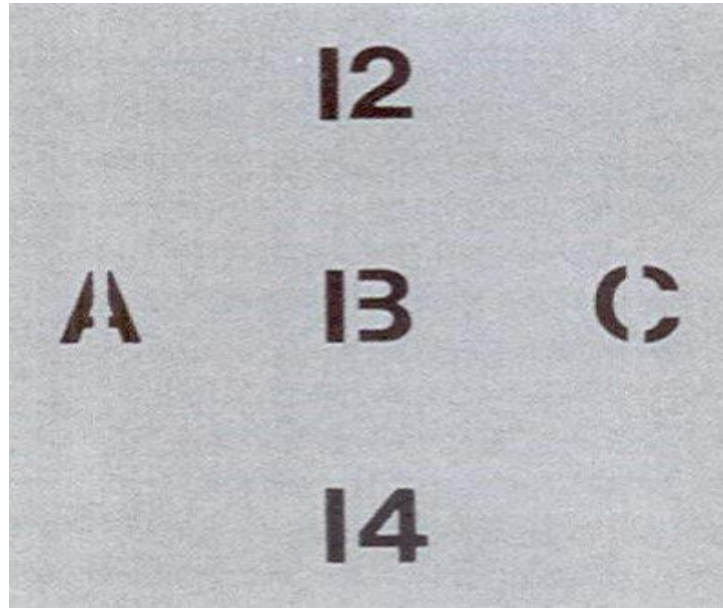
It depends *on the perspective you take*





Personal leadership = ability to consider alternatives

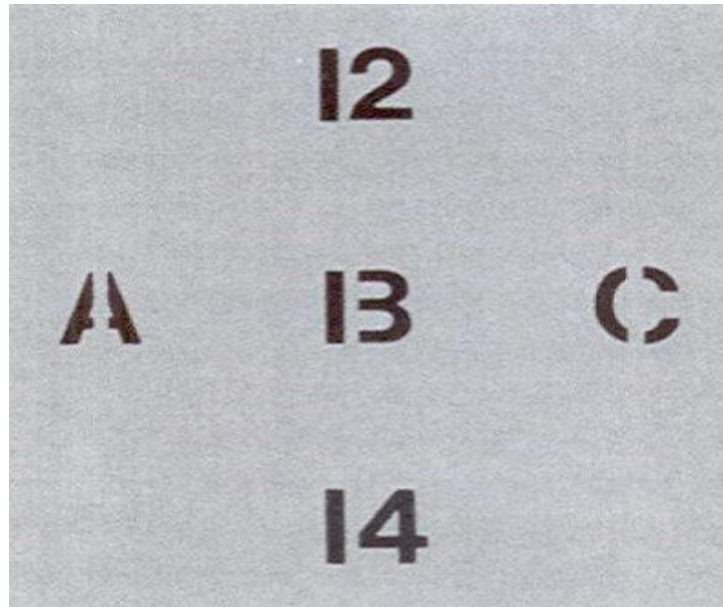
Q: What is the meaning of the symbol in the middle?





Personal leadership = ability to consider alternatives

Q: What is the meaning of the symbol in the middle?



Answer:





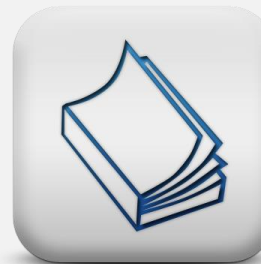
Personal leadership = ability to change perspective

What you may think

Group work
“The people in my team seem to know exactly what they want”

“So few lectures and tutorials. Hurray, I have got a lot of spare time.”

Another perspective



+





Personal leadership = ability to change perspective

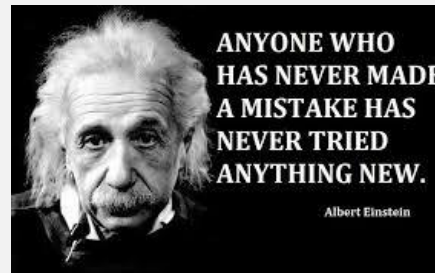
What you may think

“Lecturer is an authority”

“What will they think if I get it wrong?!”

Another perspective

“Lecturers are experts on their fields and they facilitate students’ learning process and they like being challenged”





Also vital: intercultural competencies



Culture: the learned values, assumptions and attitudes about appropriate behaviour that are shared by people in specific groups



International faculty: benefit from diversity and practice inclusion

Options for overcoming cultural differences :

➤ Expect others to adapt. Or adapt to others?



or

➤ Understand cultural differences (gather lots of information)



or

➤ **Develop cultural intelligence =
 knowledge + alertness to cues + skills**





So... for a good start at FEB:



You are now part of the FEB academic community

We're in this together!





Your experience at FEB





Your experience at FEB





Student advisors

Confidential support & advice

- FEB currently has **5 student advisors**
- Who is the **student advisor of your study program?**

Check our website:

<https://www.rug.nl/feb/studyadvisors>





Student advisors

QUESTION

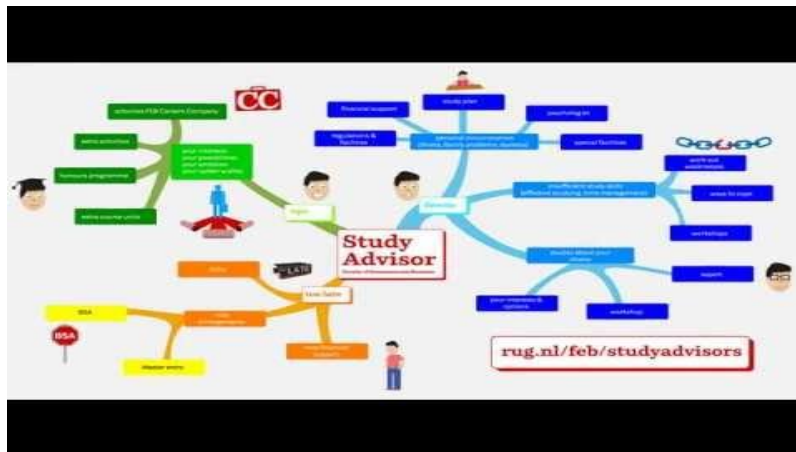
- Do you have any experience in your previous education with a study advisor/student advisor/academic advisor?



Student advisors

Confidential support and advice

<https://www.youtube.com/watch?v=Pur-riGtr94>





Student advisors

When to contact us?

- **Personal circumstances**
e.g. disability, learning impairment, illness, family circumstances, etc
- **Possible arrangements/facilities**
 - Report in time
 - Provide documentation/statements
- **If you experience study delay**
- **Study planning and advice on study skills**





Student advisors

When to contact us?

- **Study choices**
- **Issues with staff, students, e.g. harassment or discrimination**
- **A listening ear**
- **Guidance to other help/resources**



All conversations are confidential



Other help/resources at FEB/ UG

- Practical questions regarding your studies (grades, enrolment, graduation, etc)

Student Support Desk FEB

<https://www.rug.nl/feb/education/support/>

- Career advice, orientation, preparation

Career Services FEB

<https://www.rug.nl/feb/education/career-services/>

- Psychological support, workshops, training

Student Service Centre

<https://www.rug.nl/education/student-service-centre/>

- General info on where to find support

www.rug.nl/sp/well-being





Student advisors

How to contact us/corona measures

- **By email**
- Possibility for Google Meet, telephone appointment or face-to-face meeting. To be discussed with your advisor.
- Check our **website** for the student advisor of your program, their **email address** & contact options

<https://www.rug.nl/feb/studyadvisors>

- Don't hesitate to get in touch!
- Good luck with your studies!





university of
 groningen

faculty of economics
 and business



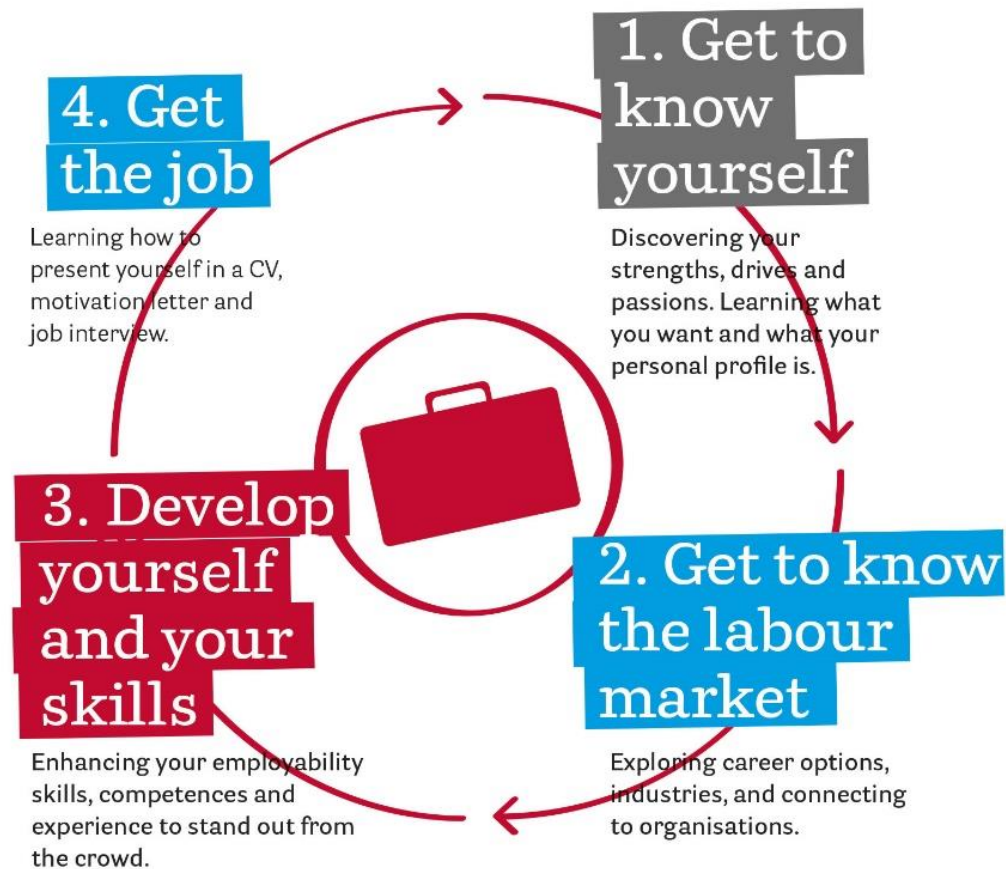
welcome

FEB Career Services





Transition from Uni to first job





2. How do we help you



Advice & Support

- Personal advice by career advisors
- Job market info
- CV and motivation letter check
- Vacancies database
- FEB Alumni Portal



Workshops & Events

- Careers Week 4-8 October! (Save the date)
- Workshops on application skills
- Future Friday



Practical Experience

- Learning Communities
- Business Research & Consulting
- Internships
- Business Challenges





Careers Week 2021

4-8 October

This week will be filled with opportunities to network and develop career related skills through workshops.

- Speak to representatives from major companies, such as Lidl, Belsimpel, and KPMG.
- Join our Giveaway and have a chance at winning a free year subscription to Swapfiets! Go to our Instagram for more information.
- Keep an eye on our website for the full program: careersweek.nl





Master Internship (EBM189A15)

- Add valuable practical experience to your academic education;
- Internship takes place in your second semester (Sem 2 2021-2022), postpone thesis to sem 1 2022-2023;
- Start and end date of internship within 2nd semester is flexible; as long as you work a minimum of 410 hours in the internship before 30 June;
- You are free (and required) to find your own internship;
- FEB Career Services supports you during your internship journey.

Want to know more? Join the online info session on Friday September 24th, 11.00-12.30 (meet.google.com/fzk-exyo-bwj), hosted by FEB's Internship Coordinator, Nienke van den Berg. No need to register.





Learning Communities

- Dive deeper into a topic of interest that is not part of your study
- New topics are introduced each semester
- Examples of **upcoming** Learning Communities semester 1:
 - Lean Six Sigma
 - Programming in Python (basic and advanced track)
 - Digitalisation and sustainability
 - Mergers & Acquisitions in SME's
 - Hydrogen fueling the Energy transition
 - Dealing with wicked problems

**Registration is open now, deadline: 15
September at midnight!**



rug.nl/sp/lc





university of
 groningen

faculty of economics
 and business



thank you

FEB Career Services

