



university of  
groningen

# Final Design | Campus Fryslân Renovation 'Beursgebouw' Leeuwarden



# Content

*What will the Faculty building of  
Campus Fryslân look like?*

- **Highlights**
- **Background**
- **Final Design**
- **Continuation**



# Highlights:

- ✓ **New function: Faculty building**
- ✓ **Enhancing historical character**
- ✓ **Technical improvements & more sustainable**

# New Faculty building for Campus Fryslân in numbers

- ✓ 5,500 m<sup>2</sup> GFA, 4 floors
- ✓ Accommodate 1,000 students (Bachelor's, Master's, PhD) and staff
- ✓ 12 project/classrooms
- ✓ 4 medium-sized lecture halls
- ✓ 2 large interconnecting lecture halls
- ✓ 180 work stations for students
- ✓ 32 work stations for PhD students
- ✓ 65 work stations for staff

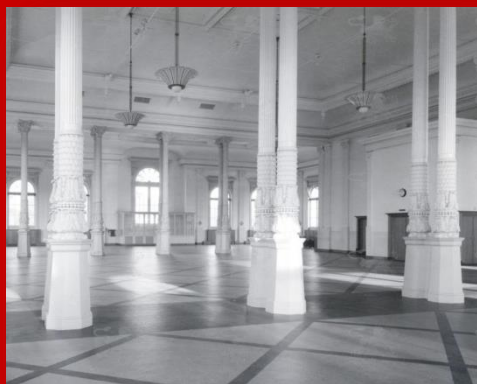
## Enhancing historical character

- ✓ **Floor-length windows** on ground floor (similar to the original windows)
- ✓ **Original entrance restored**: middle door will be accessible
- ✓ **Original entrance hall restored**: stately staircase leading upstairs
- ✓ **Steel construction** (from 1980s) **largely removed**: provides more daylight, highlighting the original ornaments (few columns remain to preserve the architectural history of the building and to reuse materials sustainably)
- ✓ **Monumental façades will remain intact**: new 'boxes' (not attached to façades) will be placed and 'stacked' as classrooms and work places

## Technical improvements and sustainability

- ✓ **All electric**: no use of gas
- ✓ **Improved insulation** in floor and ceilings
- ✓ New **HR++ windows** on ground floor to prevent energy loss
- ✓ **Underground thermal energy storage** with **heatpump** for heating and cooling
- ✓ **362 solar panels** on the flat roof
- ✓ Use of **energy low LED-lighting**
- ✓ **Plug points** at each workstation
- ✓ **High capacity** of the **wireless network** (WiFi 802.11 ac)
- ✓ From energy label G to **Energy label C or even B**

# Background



# About the building

For the past few decades the '**Beursgebouw**' - a former **trade centre** designed in **1880** by the famous urban architect **Thomas Romein** - has served as a **public library**. It will soon be transformed into a faculty building for **Campus Fryslân**, the new Faculty of the **University of Groningen** (UG).





# About Campus Fryslân

The Campus Fryslân is composed of three components:

a University College (Bachelor's level), a Master's College (Master's levels), and a Graduate School (Doctoral level).



university of  
 groningen

campus fryslân

The building will provide lecture halls, research facilities and workplaces for a faculty of around **1,000 Bachelor's, Master's and PhD students and staff members.**

# Inspired by the 17 UN sustainable development goals

The current Library building on Wirdumerdijk will serve as the faculty building for Campus Fryslân, which will start the new English-taught Master's degree programme in **Sustainable Entrepreneurship** and the new English-taught Bachelor's degree programme in **Global Responsibility & Leadership** (GRL) in September 2018. This multidisciplinary programme is inspired by the **17 United Nations goals** for a **sustainable, fair and safe world**.



Global Responsibility & Leadership ▶

# Final Design



# Design Team

J.O.  
 N.G.  
 ARCHITECTEN



Kees de Haan



Wytze Bouma

<b>Architecture</b>	J.O.N.G. architecten	Lemmer
<b>Installation consultancy</b>	Mul BV	Gouda
<b>Construction</b>	W2N Engineers BV	Drachten
<b>Building Physics and Fire Safety</b>	Van der Weele	Groningen

# Final Design | Outside



Floor-length windows on ground floor

Use middle door as main entrance

Solar Panels on the roof

HR++ windows on ground floor

# Final Design | Ground Floor



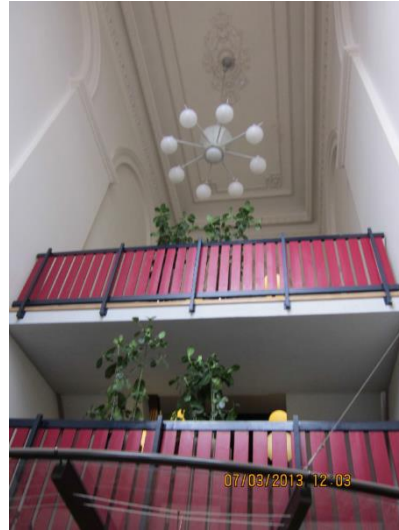
- A) Main entrance
- B) Original staircase
- C) Reception Desk
- D) Classrooms
- E) Project Rooms
- F) Work space for Staff
- G) Study spaces
- H) Toilets
- I) Rear entrance / exit

B

# Final Design | Original Staircase



Original



Current



New

F

## Final Design | Work Places Staff



Designed close to classrooms for maximal interaction between students and staff



# G Final Design | Study area along classrooms



Classrooms

Study places

Coffee

# Final Design | First Floor



- A) Main hall
- B) Auditorium
- C) Living Lab
- D) Classroom/Boardroom
- E) Classroom
- F) Work places staff/PhD
- G) Toilets
- H) Restaurant
- I) Meeting Room

# A Final Design | Main hall & Restaurant



Main hall

Classrooms

Restaurant (250 seats)

Oak floor



## Final Design | Study places & Living Lab



Study places at façade

Living Lab

Monumental façades will remain intact

# Final Design | Second Floor



A) Reading Room

B) Classrooms

C) Restaurant Seats

D) Study Places

E) Student Desk

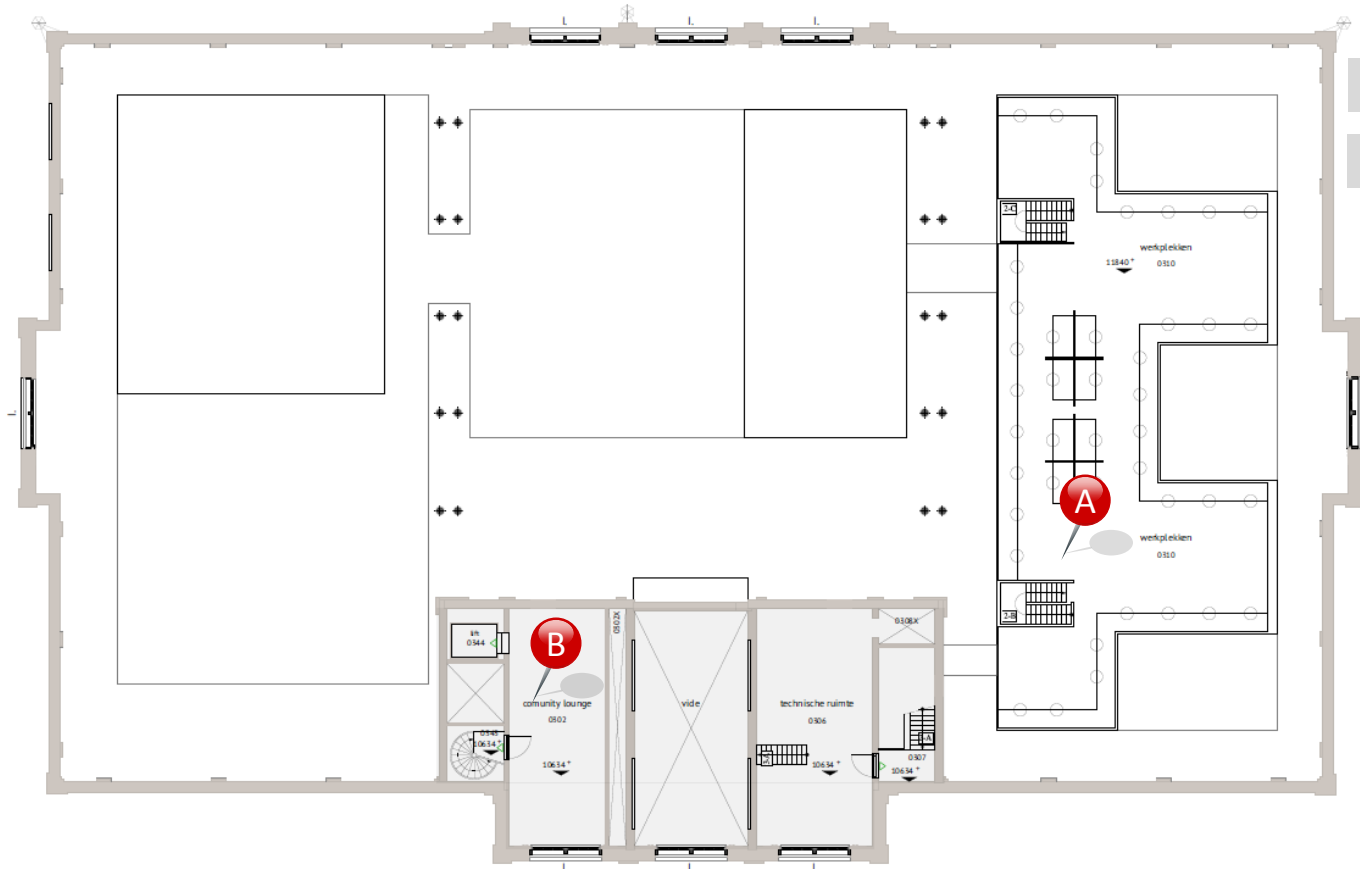
F) Staff Area

# Final Design | Restaurant Seats & Study Places



250 restaurant seats with  
 facilities for formal  
 occasions

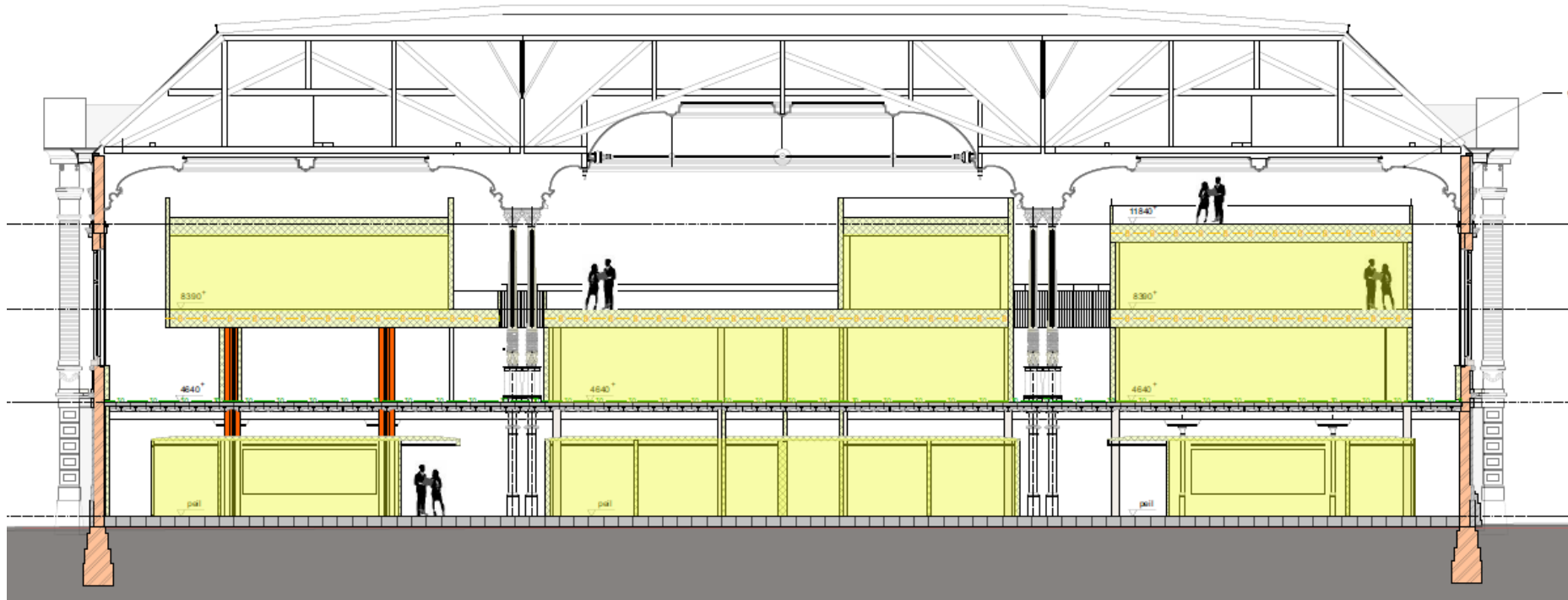
# Final Design | Third Floor



A) Work places PhD's

B) Community Lounge

# Final Design | Monumental façades will remain intact



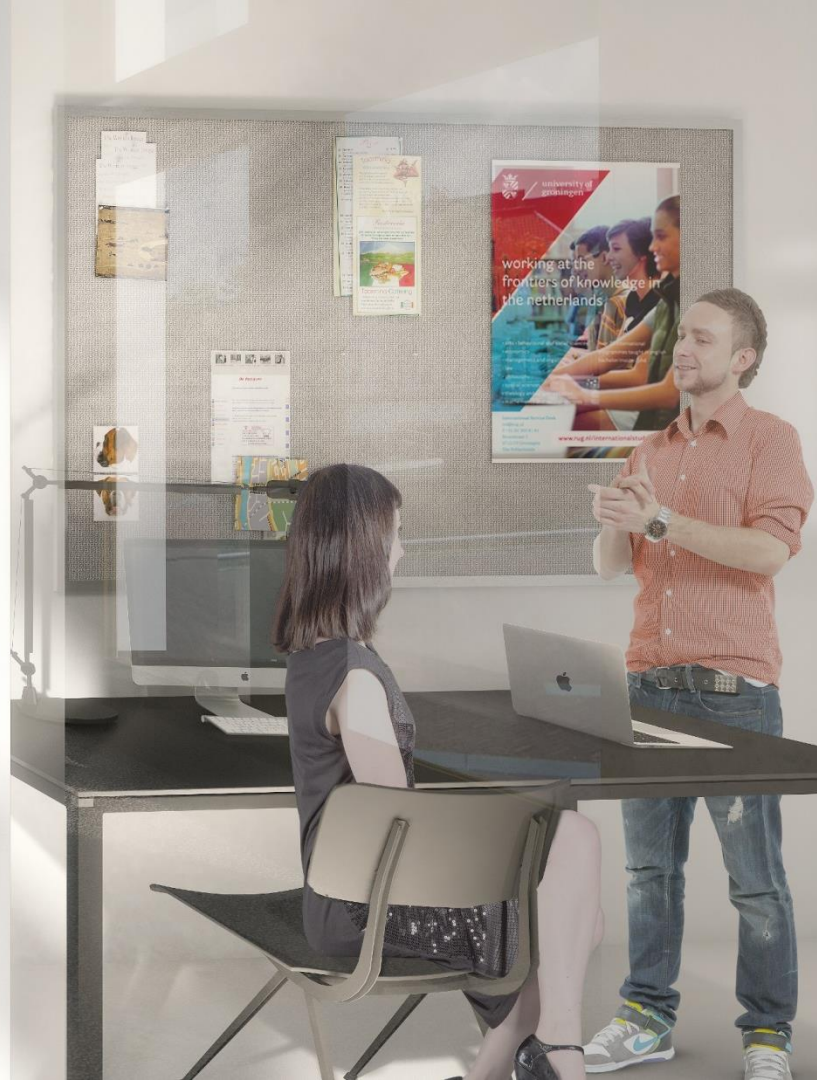


**Continuation**

# How to proceed?

When?	What is happening?
2 November 2017	Final Design presented
10 November 2017	Announcing contractor
<i>T.b.a.</i>	<i>More details will follow later</i>

















university of  
 groningen



[www.rug.nl/cf](http://www.rug.nl/cf)