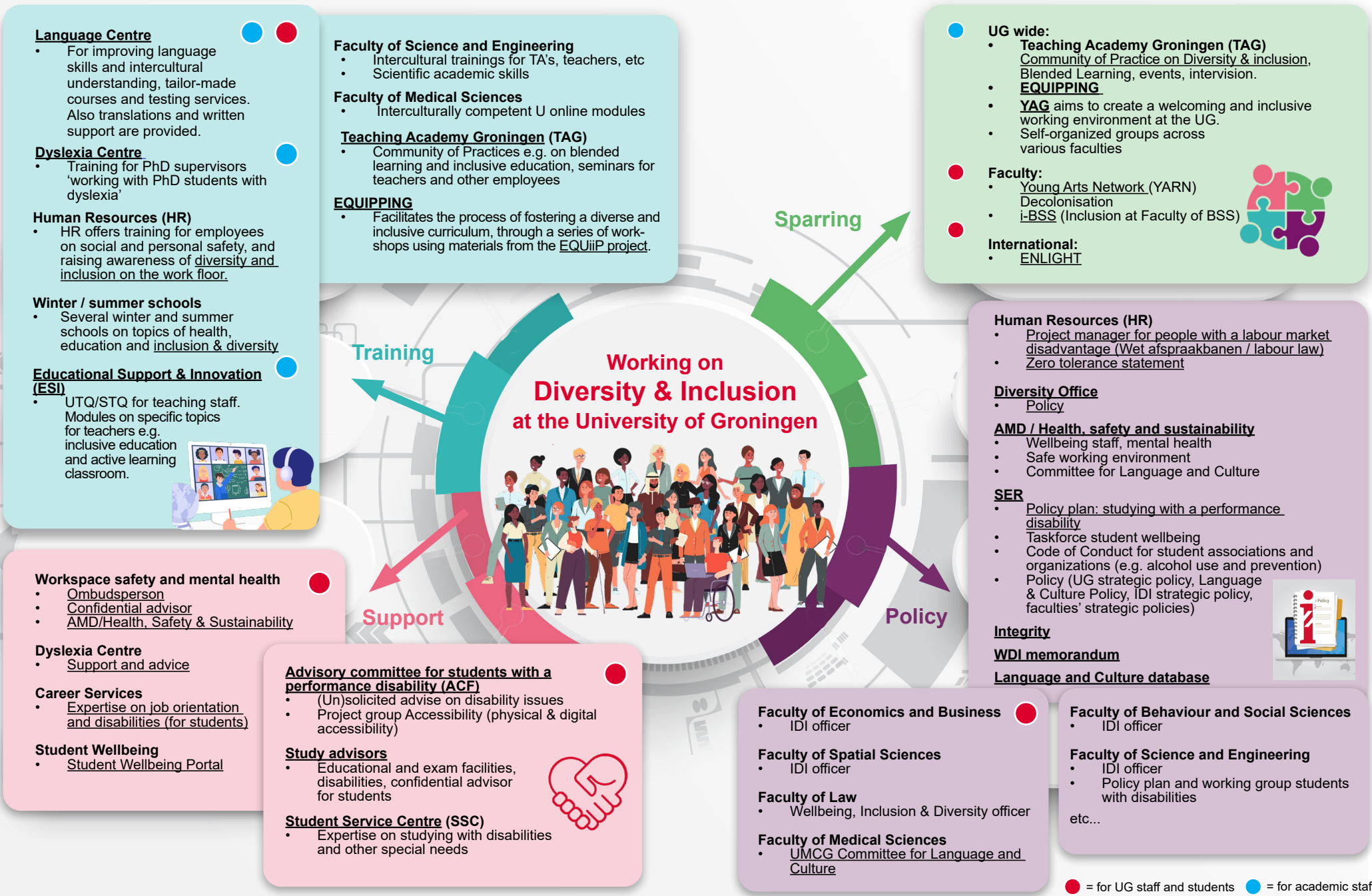


Diversity & Inclusion at the University of Groningen - Who, what & where?



Language Centre

- For improving language skills and intercultural understanding, tailor-made courses and testing services. Also translations and written support are provided.

Dyslexia Centre

- Training for PhD supervisors 'working with PhD students with dyslexia'

Human Resources (HR)

- HR offers training for employees on social and personal safety, and raising awareness of diversity and inclusion on the work floor.

Winter / summer schools

- Several winter and summer schools on topics of health, education and inclusion & diversity

Educational Support & Innovation (ESI)

- UTQ/STQ for teaching staff. Modules on specific topics for teachers e.g. inclusive education and active learning classroom.



Faculty of Science and Engineering

- Intercultural trainings for TA's, teachers, etc
- Scientific academic skills

Faculty of Medical Sciences

- Interculturally competent U online modules

Teaching Academy Groningen (TAG)

- Community of Practices e.g. on blended learning and inclusive education, seminars for teachers and other employees

EQUIPPING

- Facilitates the process of fostering a diverse and inclusive curriculum, through a series of workshops using materials from the EQUiIP project.

UG wide:

- **Teaching Academy Groningen (TAG)** Community of Practice on Diversity & inclusion, Blended Learning, events, intervention.
- **EQUIPPING**
- **YAG** aims to create a welcoming and inclusive working environment at the UG.
- Self-organized groups across various faculties

Faculty:

- Young Arts Network (YARN) Decolonisation
- i-BSS (Inclusion at Faculty of BSS)

International:

- ENLIGHT



Human Resources (HR)

- Project manager for people with a labour market disadvantage (Wet afspraakbanen / labour law)
- Zero tolerance statement

Diversity Office

- Policy

AMD / Health, safety and sustainability

- Wellbeing staff, mental health
- Safe working environment
- Committee for Language and Culture

SER

- Policy plan: studying with a performance disability
- Taskforce student wellbeing
- Code of Conduct for student associations and organizations (e.g. alcohol use and prevention)
- Policy (UG strategic policy, Language & Culture Policy, IDI strategic policy, faculties' strategic policies)



Integrity

WDI memorandum

Language and Culture database

Workspace safety and mental health

- Ombudsperson
- Confidential advisor
- AMD/Health, Safety & Sustainability

Dyslexia Centre

- Support and advice

Career Services

- Expertise on job orientation and disabilities (for students)

Student Wellbeing

- Student Wellbeing Portal

Advisory committee for students with a performance disability (ACF)

- (Un)solicited advise on disability issues
- Project group Accessibility (physical & digital accessibility)

Study advisors

- Educational and exam facilities, disabilities, confidential advisor for students

Student Service Centre (SSC)

- Expertise on studying with disabilities and other special needs



Faculty of Economics and Business

- IDI officer

Faculty of Spatial Sciences

- IDI officer

Faculty of Law

- Wellbeing, Inclusion & Diversity officer

Faculty of Medical Sciences

- UMCG Committee for Language and Culture

Faculty of Behaviour and Social Sciences

- IDI officer

Faculty of Science and Engineering

- IDI officer
- Policy plan and working group students with disabilities
- etc...

● = for UG staff and students ● = for academic staff

