

University Main Building



# Faculty of Spatial Sciences

Prof.dr.P.H. Pellenbarg, dean



1614-2011

University of  
Groningen

# The Faculty of Spatial Sciences of the University of Groningen

First chair in  
Economic and  
Human Geography  
in **1948**  
(prof. H.J.Keuning)

In 2008 we had  
our 60 year  
anniversary

Groningen city centre





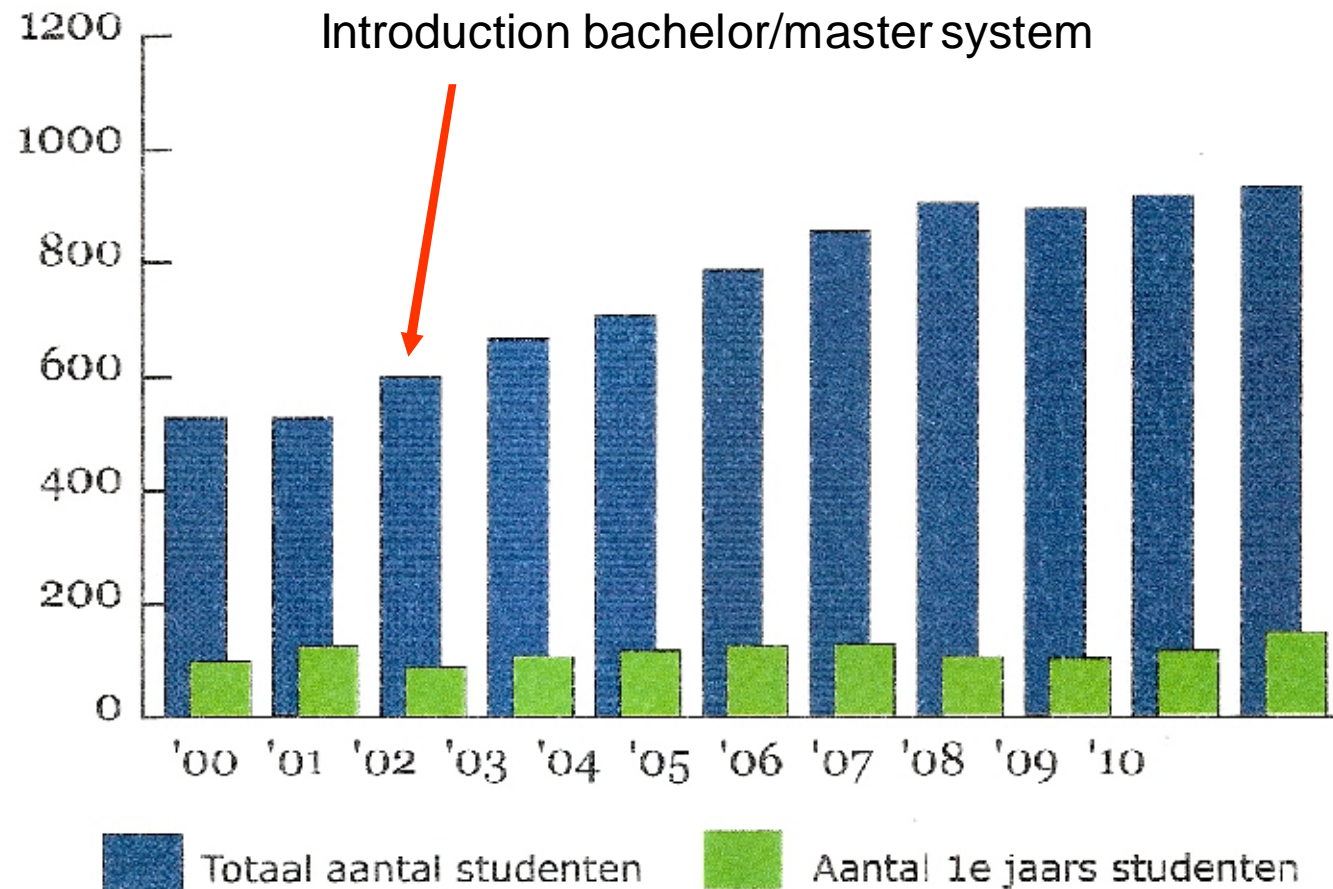
P.H. Pellenbarg  
Faculty of Spatial Sciences  
University of Groningen  
**URBAN & REGIONAL STUDIES INSTITUTE URSI**

**RUG**

# A short history of the faculty

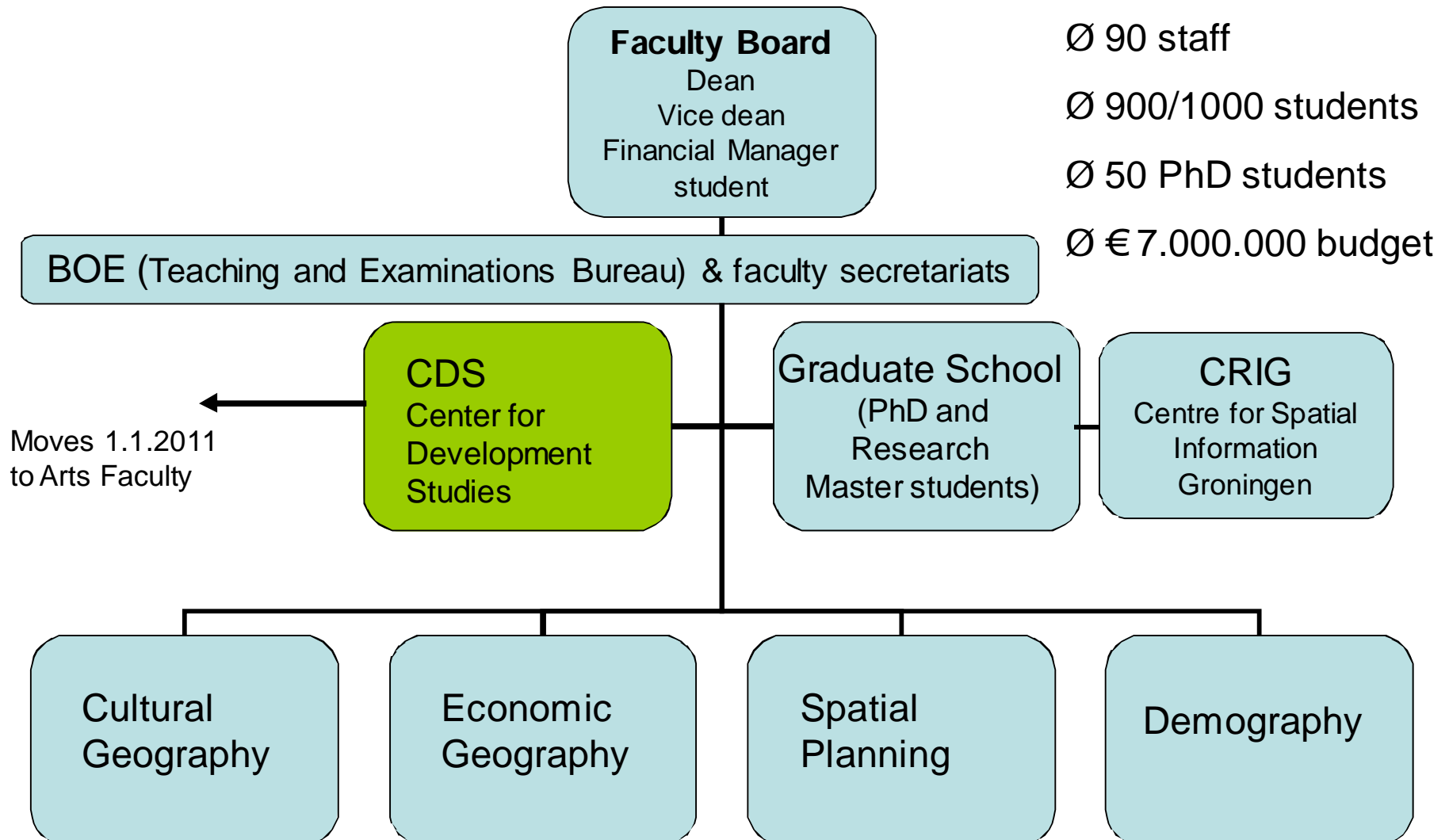
- 1948 Courses for Economy students
- 1950s Full program in Human Geography
- 1960s Rapid increase of student numbers
- 1970s Start with program in Planning
- 1980s More research-oriented (M&T) teaching, start Environmental & Infrastructure Planning. Separate programs for Economic Geography and Cultural Geography
- 1990s masters program Demography
- Since 2002: masters programs for Real Estate, Researchmaster, Masters of Geography Education

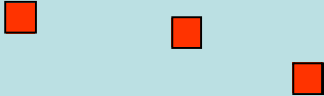

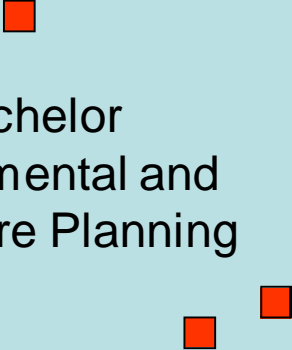
# FRW: total number of students 1998-2010\*



\* In 2010: 140 new (first year) bachelor students  
80 new students entering pre-master programs

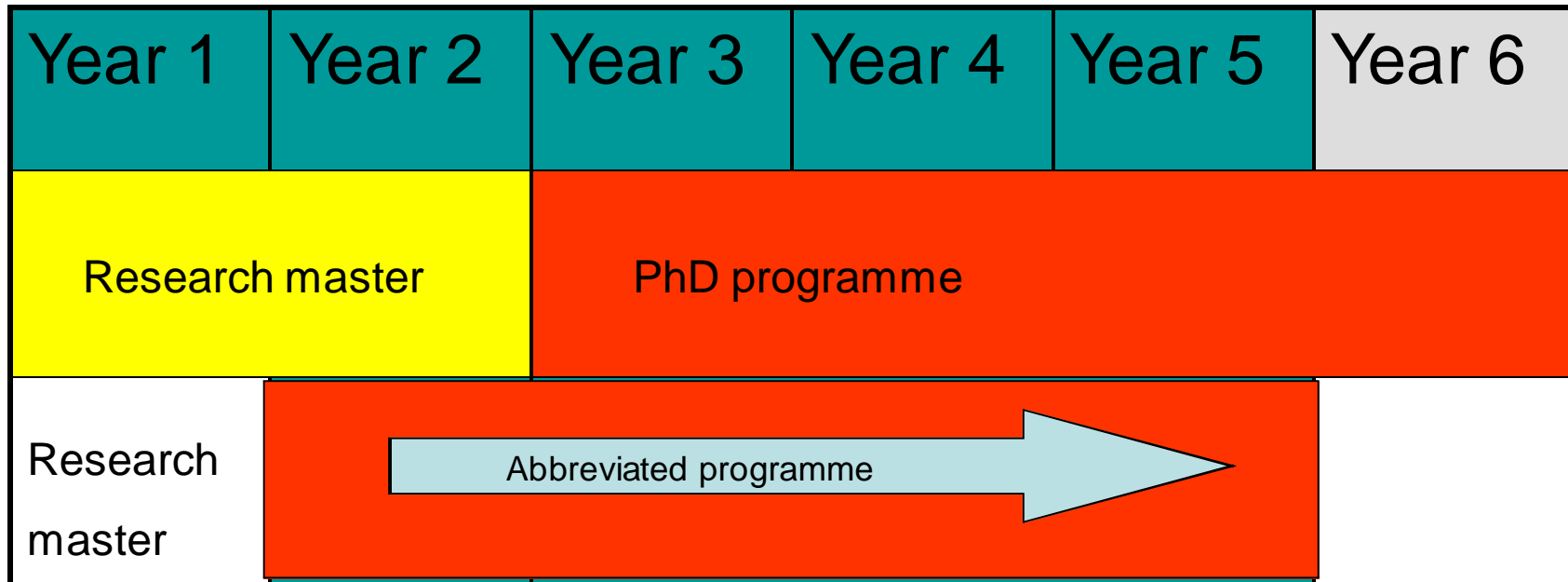
# Organisation Structure of the Faculty of Spatial Sciences



Year 1	Year 2	Year 3	Year 4	Year 5		
Bachelor Human Geography and Planning  			Master Cultural Geography	<b>Our teaching programs</b>  		
			Master Real Estate & variant: <i>International Real Estate</i>			
			Master Economic Geography			
			Master Planning			
Bachelor Environmental and Infrastructure Planning  			Master Environmental & Infrastructure Planning			
			Master Population Studies			
			Research Master Regional Studies			
			Master of Geography Education			

English courses → 

# FRW Graduate School



# Internationalisation

- *More and more foreign students in the English language master programs*
- *Many possibilities for exchange students, we have relations with universities in all continents*
- *Several structural relations with leading universities abroad*
- *More and more English spoken on the 'workfloor'*



# International cooperation in education (structural relations)

- *Existing:*
  - > Erasmus (exchange) programme with 40 universities in EU
  - > NEURUS programme with 8 universities in US & Europe
  - > Double degree Master program Environmental&Infra Planning with Technical University Bandung, Indonesia (ITB)
  - > Double degree MSc program EIP with the Carl von Ossietzky University Oldenburg, Germany
- *Within short:*
  - > Dual degree program Spatial Planning with University of Peking (PKU)
- *More to come, i.e.*
  - > Master of International Real Estate

# What is expected from a university :

not only

> Scientific Education

but also:

> Scientific Research

and

> Services to Society

P.H. Pellenbarg  
Faculty of Spatial Sciences  
University of Groningen  
**URBAN & REGIONAL STUDIES INSTITUTE URSI**

**RUG**



## *Research programs until 2007:*

- 1. planning for environmental quality*
- 2. determinants of population dynamics*
- 3. explaining spatial-economic change*
- 4. making places*

International research assessment 2007: 2 and 3 are among the 4 top-rated programs in the Netherlands (grade 4,5 = very good/excellent)

*each year our staff writes on average*

- > 50 academic publications*
- > 100 professional publications*

**RuG**

P.H. Pellenbarg  
Faculty of Spatial Sciences  
University of Groningen  
**URBAN & REGIONAL STUDIES INSTITUTE URSI**

*New focus for  
faculty research:*

*Wellbeing, Innovation  
and Spatial Transformation*

*".....the strive for wellbeing is  
driven by innovation, and impacts  
regionally different on issues of  
ageing, health, governance,  
technology, planning,  
entrepreneurship, culture,  
investment, and housing".*

P.H. Pellenbarg  
Faculty of Spatial Sciences  
University of Groningen  
URBAN & REGIONAL STUDIES INSTITUTE URSI

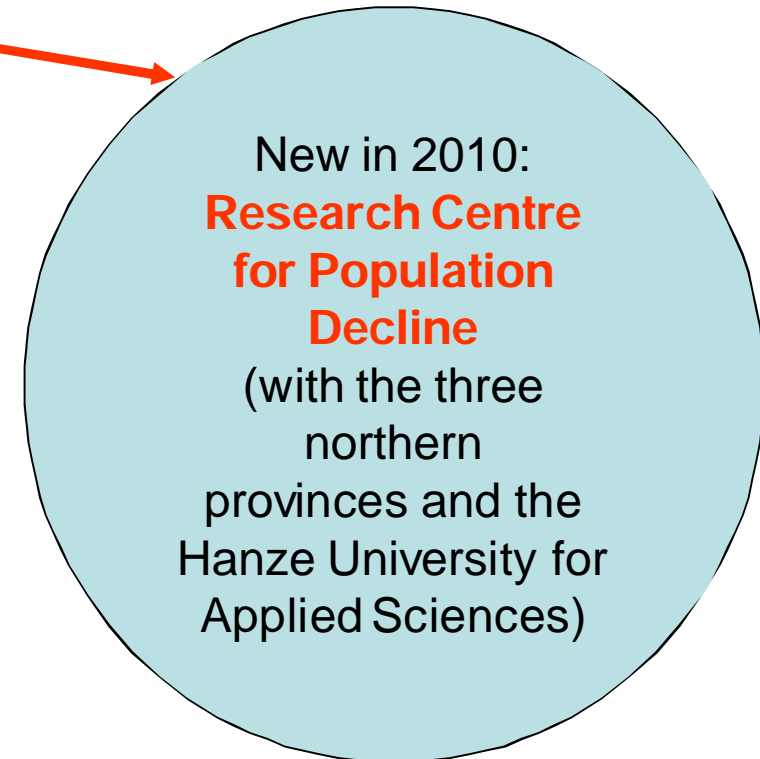
RUG



Teaching, Research, but also:  
*Services to Society*

Examples:

- Analysis of regional population decline
- Labour market studies for the N-Netherlands
- Effect studies for the Groningen marketing campaign
- Housing studies for the N-Netherlands
- Each year: the Groningen Real Estate Report



# *Welcome to Groningen!*



P.H. Pellenbarg  
Faculty of Spatial Sciences  
University of Groningen  
**URBAN & REGIONAL STUDIES INSTITUTE URSI**

**RUG**